

TOWN OF LYME, CONNECTICUT
TOWN OF OLD LYME, CONNECTICUT



LYMES' SENIOR CENTER

26 TOWN WOODS ROAD
OLD LYME, CONNECTICUT

NOVEMBER 2022

CONTRACT DRAWINGS

DESIGN DEVELOPMENT PRICING SET

PREPARED FOR:

THE TOWN OF LYME AND THE TOWN OF OLD LYME

PREPARED BY:

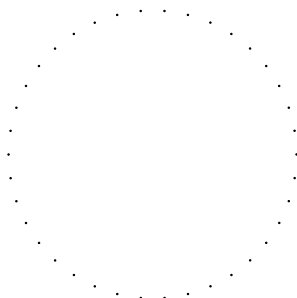
Point One Architects
101 Shore Road
Old Lyme, CT 06371
860.434.7707
www.pointonearchitects.com

Summer Hill

Civil Engineers & Land Surveyors, P.C.
60 Wall Street
P.O. Box 708
Madison, Connecticut 06443-0708
Telephone: (203) 245-0722

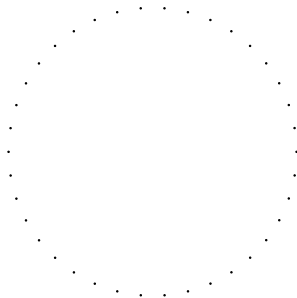
No. _____

ARCHITECT



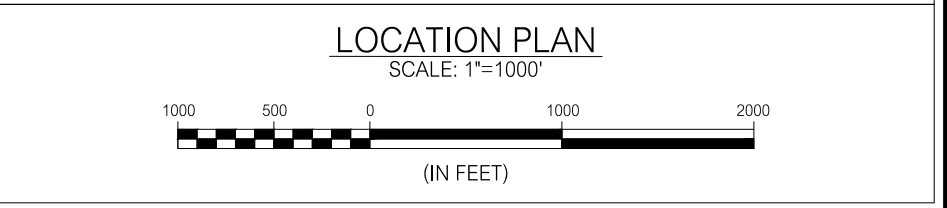
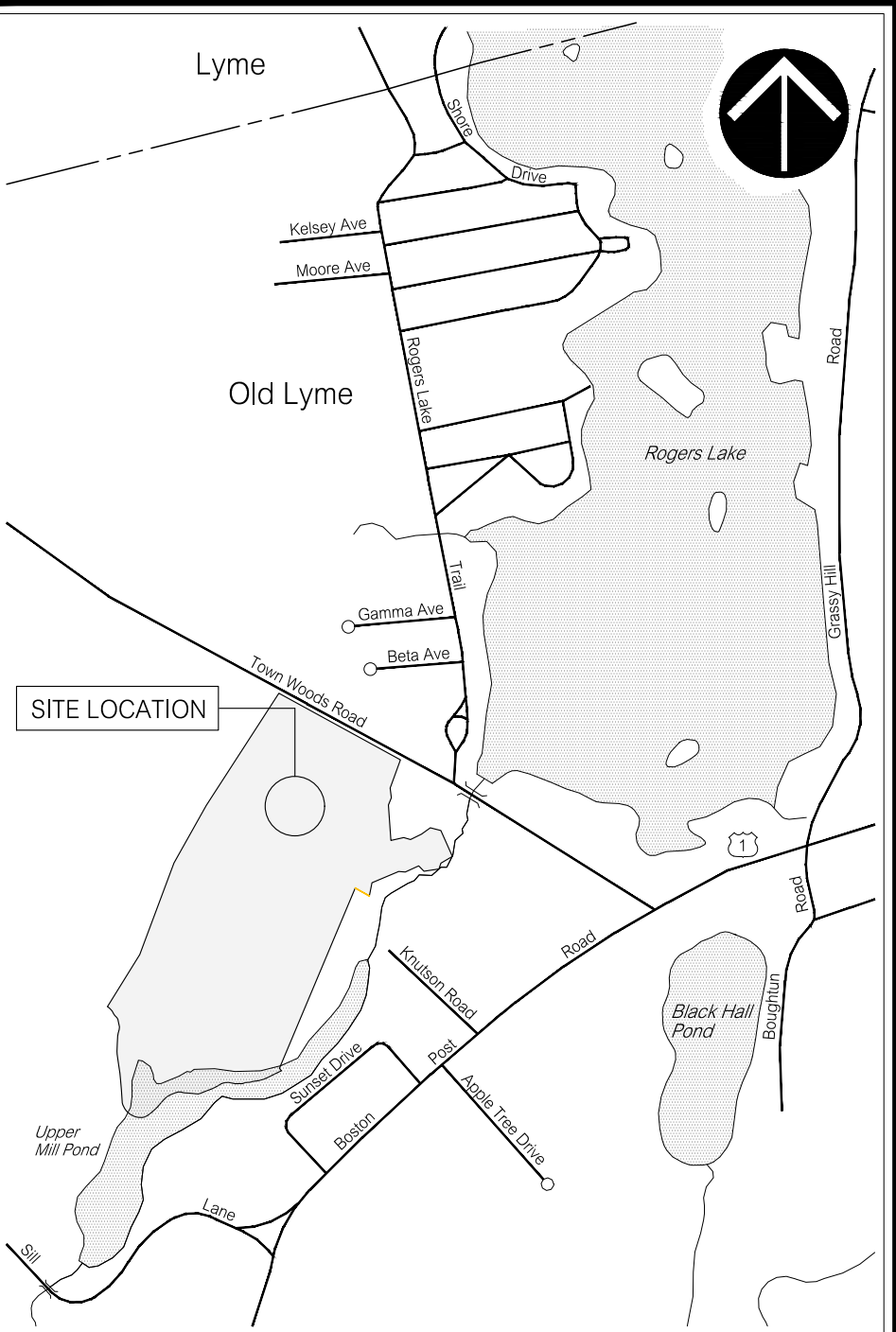
POINT ONE ARCHITECTS
GREGORY E. NUCCI, AIA
CT REGISTRATION No. 4987

CIVIL ENGINEER



SUMMER HILL CIVIL ENGINEERS & LAND SURVEYORS, P.C.
MICHAEL J. OTT, P.E., L.S.
CT REGISTRATION No. 70082

SCHEDULE OF DRAWINGS	
SHEET No.	TITLE
C0.1	TITLE SHEET
C0.2	GENERAL NOTES, ABBREVIATIONS, AND LEGEND
C0.3	EROSION AND SEDIMENT CONTROL NOTES
C1.1	ORTHOPHOTOGRAPH VICINITY PLAN
C1.2	EXISTING CONDITIONS PLAN
C2.1	SITE PREPARATION PLAN
C2.2	GENERAL PLAN
C2.3	SITE LAYOUT PLAN
C3.1	DETAILS
C3.2	DETAILS
C3.3	DETAILS
C3.4	DETAILS
C3.5	DETAILS
EX1	EXISTING FLOOR PLANS
EX2	EXISTING ELEVATIONS
A1	PROPOSED PLANS
A2	PRELIMINARY CODE ANALYSIS
A3	PROPOSED ELEVATIONS
A4	FURNITURE LAYOUTS I
A5	FUTNITURE LAYOUTS II
A6	PROPOSED LANDSCAPE PLAN
A7	LYMES' SENIOR CENTER PERSPECTIVES



ABBREVIATIONS

Ac.	ACRE
ACP	ASBESTOS CEMENT PIPE
ACOMP	ASPHALT COATED CORRUGATED METAL PIPE
A.O.B.E.	AS ORDERED BY ENGINEER
B&B	BALLED & BURLAPPED
BIT.	BITUMINOUS
BM	BENCHMARK
B.O.F.	BOTTOM OF FOOTING
CATV	CABLE TELEVISION
CB	CATCH BASIN
C.C.	CENTER TO CENTER
C.C.S.	CONNECTICUT COORDINATE SYSTEM
CFS	CUBIC FEET PER SECOND
CHD	CONNECTICUT HIGHWAY DEPARTMENT
CIP	CAST IRON PIPE
CJ	CONSTRUCTION OR CONTRACTION JOINT
CL	CLEAR
C.L.&P	CONNECTICUT LIGHT AND POWER
CMP	CORRUGATED METAL PIPE
CMU	CONCRETE MASONRY UNIT
CONC.	CONCRETE
CONT.	CONTINUOUS
CFEP	CORRUGATED POLYETHYLENE PIPE
C.Y.	CUBIC YARD
DBL	DOUBLE
DH	DRILL HOLE
DI	DUCTILE IRON
DIA.	DIAMETER
DIP	DUCTILE IRON PIPE
EA.	EACH
EJ	EXPANSION JOINT
EL.	ELEVATION
E.O.B.	END OF BORING
EOP	EDGE OF PAVEMENT
EQ.	EQUAL
EX	EXISTING
f _c	MINIMUM COMPRESSIVE STRENGTH
f _y	YIELD STRENGTH OF STEEL REINFORCEMENT
F.F.	FINISH FLOOR
FM	FORCE MAIN
FND.	FOUND
FRP	FIBERGLASS REINFORCED PLASTIC
FT	FEET OR FOOT
GA.	GAUGE
GAL	GALLON
H	HORIZONTAL
HDPE	HIGH DENSITY POLYETHYLENE
HMA	HOT MIX ASPHALT
HTL	HIGH TIDE LINE
I.D.	INSIDE DIAMETER
INV.	INVERT
I.P.	IRON PIPE/PIPE
KSF	KIPS PER SQUARE FOOT
L	LENGTH
LB	POUND
L.F.	LINEAR FEET
L.S.	LUMP SUM
LT	LEFT
LVC	LENGTH OF VERTICAL CURVE
MAX.	MAXIMUM
MH	MANHOLE
MIN.	MINIMUM
MON.	MONUMENT
NF	NOW OR FORMERLY
N.I.C.	NOT IN CONTRACT
NTS	NOT TO SCALE
O.C.	ON CENTER
O.D.	OUTSIDE DIAMETER
P.C.	POINT OF CURVATURE
P.C.C.	POINT OF COMPOUND CURVATURE
PE	PLAIN END OR POLYETHYLENE
P.I.	POINT OF INTERSECTION
P.R.C.	POINT OF REVERSE CURVATURE
PSF	POUNDS PER SQUARE FOOT
PSI	POUNDS PER SQUARE INCH
P.T.	POINT OF TANGENCY
PVC	POLYVINYL CHLORIDE OR POINT OF VERTICAL CURVATURE
PVCC	POINT OF VERTICAL COMPOUND CURVATURE
PVI	POINT OF VERTICAL INTERSECTION
PVRC	POINT OF VERTICAL REVERSE CURVATURE
PVT	POINT OF VERTICAL TANGENCY
R	RADIUS
RCCE	REINFORCED CONCRETE CULVERT END
RCP	REINFORCED CONCRETE PIPE
R.O.W.	RIGHT-OF-WAY
R.R.	RAILROAD
RT	RIGHT
R/W	RETAINING WALL
SAN	SANITARY
SCG	SOUTHERN CONNECTICUT GAS
SCH.	SCHEDULE
SDR	STANDARD DIMENSION RATIO
S.F.	SQUARE FOOT
SNET	SOUTHERN NEW ENGLAND TELEPHONE
S.S.	STAINLESS STEEL
STA.	STATION
STD.	STANDARD
S.Y.	SQUARE YARD
T&B	TOP AND BOTTOM
T.F.	TOP OF FRAME
T.G.	TOP OF GRATE
T.O.F.	TOP OF FOOTING
T.O.W.	TOP OF WALL
TYP.	TYPICAL
U.I.	UNITED ILLUMINATING
V	VERTICAL
VCP	VITRIFIED CLAY PIPE
WF	WETLAND FLAG

LEGEND

EXISTING

PROPOSED

PROPERTY LINE

RIGHT-OF-WAY LINE

EASEMENT LINE

BASELINE

ELEVATION CONTOUR

ELEVATION

EDGE OF PAVEMENT

CURBING

GUIDE RAIL

TREE LINE

MAILBOX

SIGN

LIGHT POST

UTILITY POLE (W/GUY)

UTILITY POLE (W/LIGHT)

HYDRANT

CHAIN LINK FENCE

WIRE FENCE

WOOD FENCE

STONE WALL

HEDGE/ROW

WATERCOURSE

INLAND WETLAND BOUNDARY

TIDAL WETLAND BOUNDARY

COMMUNICATIONS

ELECTRIC

GAS MAIN/SERVICE

WATER MAIN/SERVICE

OVERHEAD UTILITY WIRE(S)

SANITARY SEWER ≤ 12" DIAMETER

SANITARY SEWER > 12" DIAMETER

STORM SEWER ≤ 12" DIAMETER

STORM SEWER > 12" DIAMETER

CATCH BASIN

MANHOLE

SURVEY CONTROL STATION

TEST PIT

BORING

PROBE

ASSESSOR'S MAP NO.-LOT NO.

SOIL TYPE

SOIL TYPE BOUNDARY

FLOODPLAIN BOUNDARY

CLEARING LIMIT LINE

LIMIT OF CUT

LIMIT OF FILL

PAVEMENT REMOVAL LINE

SEDIMENTATION CONTROL BARRIER

SEDIMENTATION CONTROL AT DRAINAGE STRUCTURE

DECIDUOUS TREE

CONIFEROUS TREE

SHRUB

TREE TO BE REMOVED

SOIL TYPE LEGEND

REFERENCE:
NATIONAL COOPERATIVE SOIL SURVEY DATA FOR THE STATE OF CONNECTICUT, U.S. DEPARTMENT OF AGRICULTURE, NATURAL RESOURCES CONSERVATION SERVICE

MAP UNIT SYMBOL

MAP UNIT DESCRIPTION

13

703A

WALPOLE SANDY LOAM, 0 TO 3 PERCENT SLOPES

HAVEN SILT LOAM, 0 TO 3 PERCENT SLOPES

GENERAL NOTES:

1. THESE DRAWINGS ARE INTENDED TO BE USED FOR MUNICIPAL, STATE, AND/OR FEDERAL LAND USE AND ENVIRONMENTAL PERMITTING PURPOSES AND ARE NOT INTENDED TO BE USED AS CONSTRUCTION DOCUMENTS.

2. TOPOGRAPHIC AND PLANIMETRIC INFORMATION DEPICTED HEREIN IS BASED ON INFORMATION REPRODUCED FROM THE FOLLOWING MAPS:
(A) "PROPERTY SURVEY OF LAND OF TOWN OF OLD LYME TOWN WOODS ROAD OLD LYME, CONNECTICUT", DATE: 9-26-01, SCALE: 1"=100', PREPARED BY: RICHARD W. GATES, L.S., FILED IN THE OFFICE OF THE TOWN OF OLD LYME TOWN CLERK AS MAP NO. 3157.
(B) "TOPOGRAPHIC SURVEY SENIOR CENTER TOWN OF OLD LYME & TOWN OF LYME TOWN WOODS ROAD OLD LYME, CONNECTICUT", DATE: 6-22-22, SCALE: 1"=20', PREPARED BY: RICHARD W. GATES, L.S.
3. THE INLAND WETLAND BOUNDARIES DEPICTED HEREIN WERE REPRODUCED FROM THE FOLLOWING MAP:
(C) "IMPROVEMENT LOCATION MAP TOWN OF OLD LYME SENIOR CENTER TOWN WOODS ROAD OLD LYME, CONNECTICUT", SHEETS 1-2 OF 2, DATE: 4-4-94, REVISED TO: 4-25-94, SCALE: 1"=40', PREPARED BY ANGUS MCDONALD/GARY SHARPE & ASSOCIATES, INC., FILED IN THE OFFICE OF THE TOWN OF OLD LYME TOWN CLERK AS MAP NO. 2764.
4. THE PROJECT COORDINATE SYSTEM IS REFERENCED TO THE BEARING SYSTEM OF REFERENCE MAP (A).
5. ELEVATIONS ARE REFERENCED TO AN ASSUMED VERTICAL DATUM.
6. THE PARCEL IS LOCATED WITHIN SPECIAL FLOOD HAZARD AREA ZONE AE AND FLOOD ZONE X. THE PROJECT SITE IS LOCATED WITHIN FLOOD ZONE X. REFERENCE: FEMA NATIONAL FLOOD INSURANCE PROGRAM FLOOD INSURANCE RATE MAP NEW LONDON COUNTY CONNECTICUT, PANEL 456 OF 554, MAP NUMBER 09011C0456G, EFFECTIVE DATE: 7-18-11.
7. SOIL TYPES AND/OR SOIL TYPE BOUNDARIES DEPICTED HEREIN HAVE BEEN REPRODUCED FROM NATIONAL COOPERATIVE SOIL SURVEY DATA FOR THE STATE OF CONNECTICUT, U.S. DEPARTMENT OF AGRICULTURE, NATURAL RESOURCES CONSERVATION SERVICE.
8. UNDERGROUND UTILITIES, STRUCTURES AND OTHER FACILITIES DEPICTED HEREIN HAVE BEEN COMPILED FROM RECORD MAPPING AND FIELD LOCATIONS OF ABOVE GROUND FACILITIES AND MARKOUTS. ALL UNDERGROUND FACILITY LOCATIONS SHOWN SHOULD BE CONSIDERED APPROXIMATE ONLY AND ALL FACILITIES MAY NOT BE SHOWN.
9. THE CONTRACTOR SHALL BE RESPONSIBLE FOR LOCATING ALL UNDERGROUND UTILITIES AND FOR THE MAINTENANCE AND PROTECTION THEREOF. CONTACT THE CONNECTICUT "CALL BEFORE YOU DIG" CLEARANCE CENTER (1-800-422-4265) AT LEAST TWO WORKING DAYS PRIOR TO THE START OF WORK TO ESTABLISH AND HAVE MARKED ON THE GROUND THE LOCATION OF ALL UNDERGROUND UTILITIES. NOTIFY THE ENGINEER IN THE EVENT THAT A UTILITY IS LOCATED DURING THE PROGRESS OF THE WORK THAT IS NOT INDICATED ON OR IS NOT IN ACCORDANCE WITH THE DRAWINGS.
UTILITY COMPANY CONTACTS:
CABLE TELEVISION - COMCAST OF CONNECTICUT, INC. (860) 505-3331
COMMUNICATIONS - FRONTIER COMMUNICATIONS OF CONNECTICUT (203) 238-5000
ELECTRIC - EVERSOURCE ENERGY (860) 665-4733
10. IN GENERAL, EXISTING CONDITIONS AND FEATURES ARE DEPICTED IN SCREENED GRAPHICS AND TITLECASE LETTERING AND PROPOSED WORK IS DEPICTED IN BOLD GRAPHICS AND UPPERCASE LETTERING.
11. THE STANDARD SPECIFICATIONS ARE THE DIVISION II CONSTRUCTION DETAILS AND DIVISION III MATERIALS SECTION OF THE "STATE OF CONNECTICUT DEPARTMENT OF TRANSPORTATION STANDARD SPECIFICATIONS FOR ROADS, BRIDGES, FACILITIES AND INCIDENTAL CONSTRUCTION, FORM 818", 2020, LATEST REVISION, INCLUDING ALL SUPPLEMENTS THERETO.
12. PRIOR TO THE START OF WORK, THOROUGHLY REVIEW THE DRAWINGS, THE SITE OF THE WORK AND ALL EXISTING CONDITIONS AND FEATURES. NOTIFY THE ENGINEER OF DISCREPANCIES BETWEEN THE DRAWINGS AND EXISTING CONDITIONS AND FEATURES IN THE FIELD.
13. ADHERE TO THE REGULATIONS AND ORDINANCES OF THE TOWN OF OLD LYME, ALL APPLICABLE STATE AND FEDERAL REGULATORY AUTHORITIES, AND THE PROVISIONS OF ALL APPROVALS AND OR PERMITS ISSUED FOR THE PROJECT.
14. PROVIDE EROSION AND SEDIMENT CONTROLS AS SHOWN ON THE DRAWINGS OR AS ORDERED BY THE ENGINEER. THE MINIMUM STANDARDS FOR ALL EROSION AND SEDIMENT CONTROLS SHALL BE THOSE OUTLINED IN THE "2002 CONNECTICUT GUIDELINES FOR SOIL EROSION AND SEDIMENT CONTROL", LATEST REVISION. TEMPORARY EROSION AND SEDIMENT CONTROLS SHALL BE MAINTAINED UNTIL ALL DISTURBED AREAS HAVE BEEN STABILIZED.
15. MATERIAL AND EQUIPMENT STORAGE AREA LOCATIONS SHALL BE APPROVED BY THE ENGINEER.
16. VEHICLE AND EQUIPMENT FUELING AND MAINTENANCE OPERATIONS SHALL BE PERFORMED ONLY IN AREAS APPROVED BY THE ENGINEER.
17. IN THE EVENT OF A CONTAMINANT RELEASE, IMMEDIATELY NOTIFY THE CONNECTICUT DEPARTMENT OF ENERGY AND ENVIRONMENTAL PROTECTION EMERGENCY RESPONSE AND SPILL PREVENTION DIVISION (860-424-3338 OR 866-537-7745) AND THE TOWN OF OLD LYME FIRE MARSHALS OFFICE (860-434-1605 X231).
18. THE OPERATION OF THE TOWN WOODS RECREATION PARK SHALL BE MAINTAINED THROUGHOUT THE CONSTRUCTION PERIOD. BE RESPONSIBLE FOR THE THE MAINTENANCE AND PROTECTION OF PEDESTRIAN AND VEHICULAR TRAFFIC WITHIN AND ADJACENT TO WORK AREAS INCLUDING THE INSTALLATION AND MAINTENANCE OF TEMPORARY FENCING AND GATES AS SHOWN ON THE DRAWINGS.
19. BE RESPONSIBLE FOR THE CONTROL OF DUST RESULTING FROM CONSTRUCTION OPERATIONS.
20. PROTECT ALL EXISTING CONDITIONS AND FEATURES WHERE NEW CONSTRUCTION IS NOT SHOWN ON THE DRAWINGS.
21. PROTECT STREET LINE MONUMENTS AND PRIVATE BOUNDARY MARKERS. RESET STREET LINE MONUMENTS AND PRIVATE BOUNDARY MARKERS DISTURBED BY CONSTRUCTION OPERATIONS.
22. PRIOR TO THE START OF TREE AND VEGETATION REMOVAL WORK, SCHEDULE A FIELD MEETING WITH THE ENGINEER AND THE LANDSCAPE ARCHITECT TO REVIEW SPECIFIC TREES AND VEGETATION TO BE REMOVED AND TREES AND VEGETATION TO BE PROTECTED.
23. SAWCUT PAVEMENTS AT THE LINES SHOWN ON THE DRAWINGS, WHERE NEW BITUMINOUS CONCRETE PAVEMENT IS TO BE PLACED AGAINST EXISTING PAVEMENT, CLEAN THE FACE OF EXISTING PAVEMENT AND APPLY LIQUID BITUMEN. MATCH EXISTING ADJACENT PAVEMENT SURFACE ELEVATIONS WITH NEW PAVEMENT.
24. ADJUST MANHOLE FRAMES, HANDHOLES, AND VALVE BOXES TO MATCH FINISHED GROUND SURFACE AND PAVEMENTS ELEVATIONS.
25. PAVEMENT MARKINGS SHALL BE INSTALLED IN ACCORDANCE WITH THE REQUIREMENTS OF THE STANDARD SPECIFICATIONS.
26. SIGNS SHALL BE INSTALLED IN ACCORDANCE WITH THE REQUIREMENTS OF THE STANDARD SPECIFICATIONS, UNLESS OTHERWISE NOTED. TEMPORARY AND PERMANENT SIGN IDENTIFICATION NUMBERS SHOWN ON THE DRAWINGS ARE IN ACCORDANCE WITH THE U.S. DEPARTMENT OF TRANSPORTATION FEDERAL HIGHWAY ADMINISTRATION "MANUAL ON UNIFORM TRAFFIC CONTROL DEVICES", LATEST REVISION AND THE CONNECTICUT DEPARTMENT OF TRANSPORTATION SIGN CATALOG, LATEST REVISION.
27. THE SUBGRADE OF DISTURBED GROUND SURFACES NOT NOTED TO BE SURFACED OTHERWISE SHALL RECEIVE A 6" THICKNESS OF TOPSOIL UPON WHICH TURF SHALL BE ESTABLISHED IN ACCORDANCE WITH THE VEGETATIVE SOIL COVER TEMPORARY OR PERMANENT SEEDING INSTALLATION REQUIREMENTS OF THE 2002 CONNECTICUT GUIDELINES FOR SOIL EROSION AND SEDIMENT CONTROL, LATEST REVISION.

REVISIONS:

NO. DATE DESCRIPTION

3-8-23 DD PRICING SET

REVISIONS

TITLE:

LAND OF THE TOWNS OF LYME AND OLD LYME 26 TOWN WOODS ROAD OLD LYME, CONNECTICUT

SEAL:

Seal area

PREPARED BY:

Summer Hill
Civil Engineers & Land Surveyors, P.C.
60 Wall Street
P.O. Box 708
Madison, Connecticut 06443-0708
Telephone: (203) 245-0722

PROJECT:

LYME-OLD LYME SENIOR CENTER
26 TOWN WOODS ROAD
OLD LYME, CONNECTICUT

DATE:

11-1-22

SCALE:

NONE

DESIGNED:

MJO

CHECKED:

LJM

SHEET:

GENERAL NOTES, ABBREVIATIONS AND LEGEND

FIELD BOOK:

PROJECT NO.:

22-15

SHEET NO.:

C0.2



NOTES:
1. BASE IMAGERY REFERENCE: 2016 ORTHOPHOTOGRAPHY ACQUIRED FROM:
CONNECTICUT ENVIRONMENTAL CONDITIONS ONLINE, URL: cec.state.ct.us
UNIVERSITY OF CONNECTICUT AND CONNECTICUT DEPARTMENT OF ENERGY AND
ENVIRONMENTAL PROTECTION

REVISIONS		DESCRIPTION
NO.	DATE	
1	3-8-23	DD PRICING SET
		REVISIONS

TITLE:

LAND
OF
THE
TOWNS OF LYME AND OLD LYME
26 TOWN WOODS ROAD
OLD LYME, CONNECTICUT

SEAL:

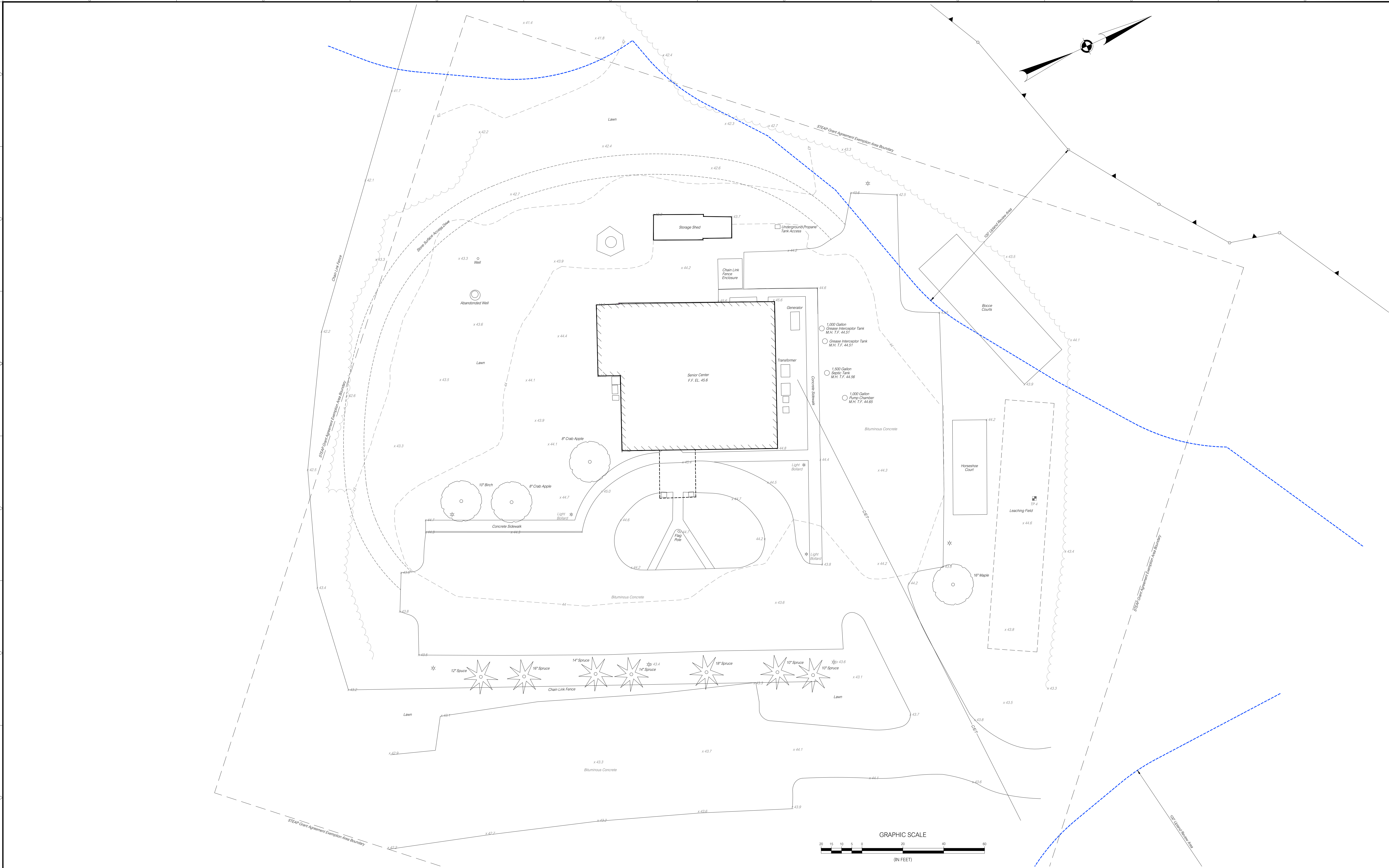
PREPARED BY:

Summer Hill
Civil Engineers & Land Surveyors, P.C.
60 Wall Street
P.O. Box 708
Madison, Connecticut 06443-0708
Telephone: (203) 245-0722

PROJECT:

LYME-OLD LYME SENIOR CENTER
26 TOWN WOODS ROAD
OLD LYME, CONNECTICUT

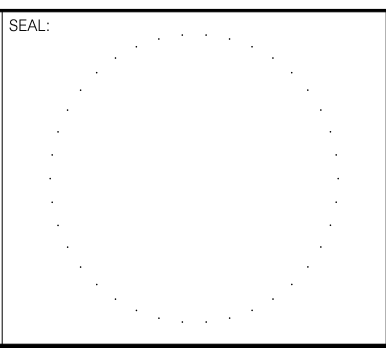
DATE:	11-1-22	SHEET:	ORTHOPHOTOGRAPH VICINITY PLAN	SHEET NO.:	C1.1
SCALE:	1"=100'	DESIGNED:	MJO		
CHECKED:	LJM	FIELD BOOK:		PROJECT NO.:	22-15



REVISIONS:		
3-8-23	DO PRICING SET	
NO.	DATE	DESCRIPTION
REVISIONS		

TITLE:

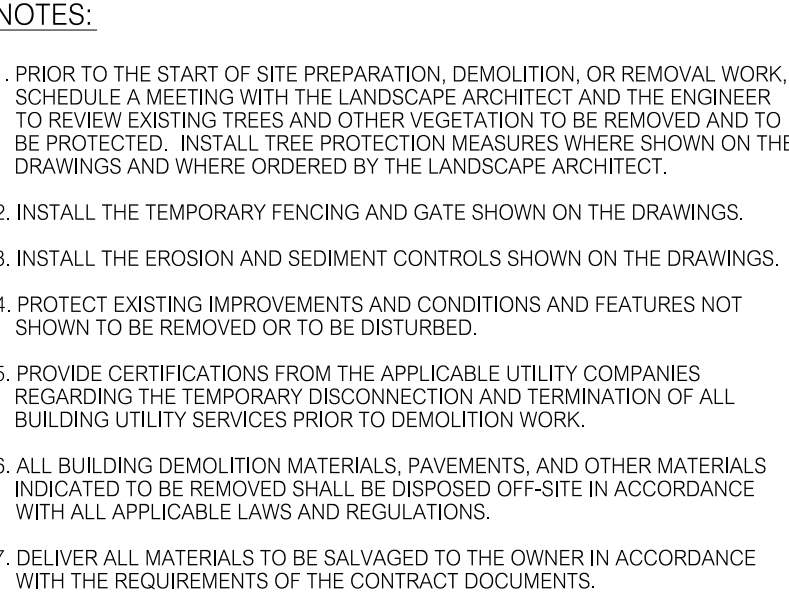
LAND
OF
THE
TOWNS OF LYME AND OLD LYME
26 TOWN WOODS ROAD
OLD LYME, CONNECTICUT

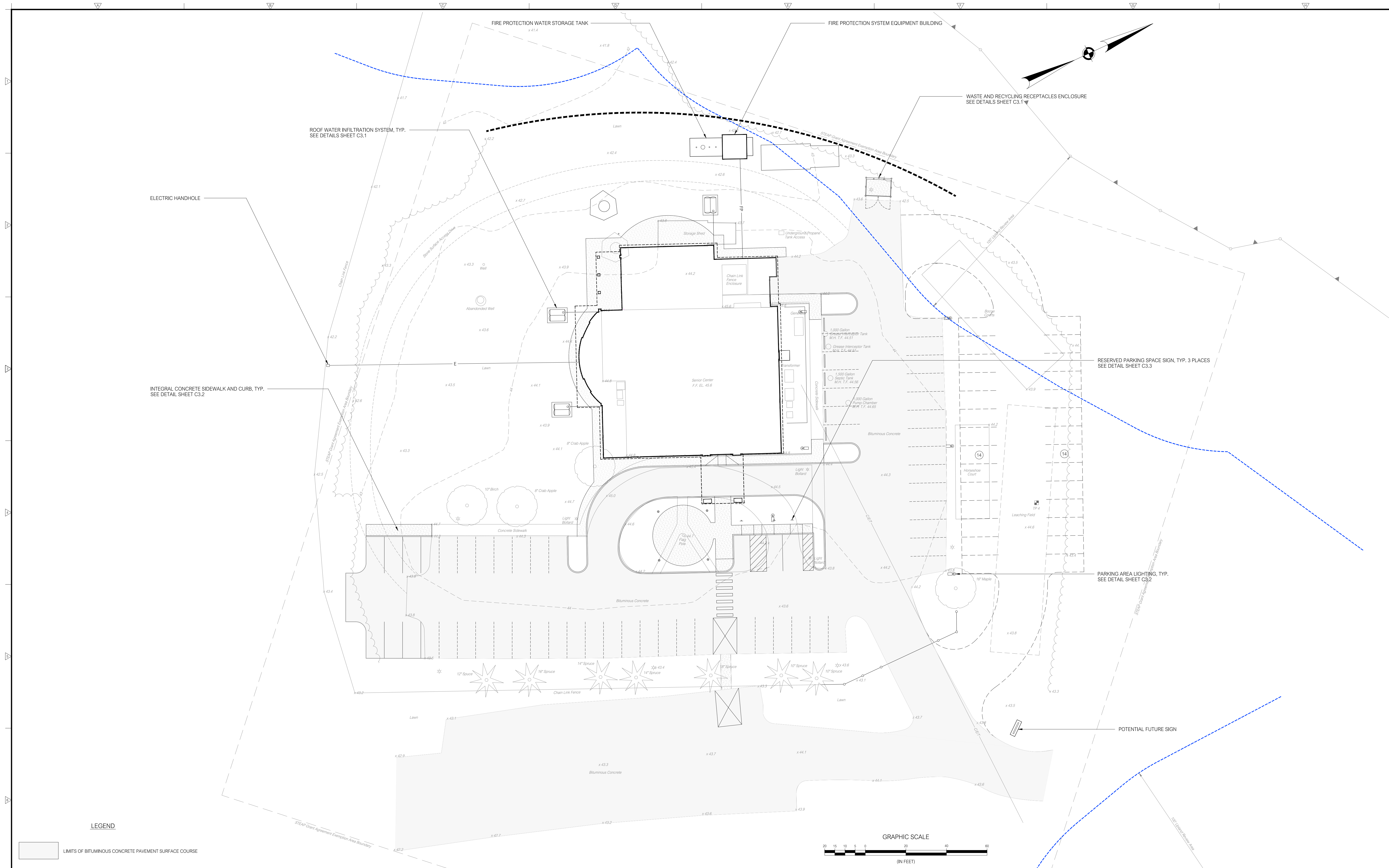


PREPARED BY:
Summer Hill
Civil Engineers & Land Surveyors, P.C.
69 Wall Street
P.O. Box 708
Madison, Connecticut 06443-0708
Telephone: (203) 245-0722

PROJECT:			LYME-OLD LYME SENIOR CENTER 26 TOWN WOODS ROAD OLD LYME, CONNECTICUT	
DATE:	11-1-22	SHEET:	EXISTING CONDITIONS PLAN	
SCALE:	1"=20'			
DRAWN:	MJO		PROJECT NO.: 22-15	
CHECKED:	LJM			

C1.2

C2.1



REVISIONS:

<div><div></div><div></div></div>	3-8-23	DO PRICING SET
NO.	DATE	DESCRIPTION
REVISIONS		

TITLE:

LAND
OF
THE
TOWNS OF LYME AND OLD LYME
26 TOWN WOODS ROAD
OLD LYME, CONNECTICUT

SEAL:

PREPARED BY:

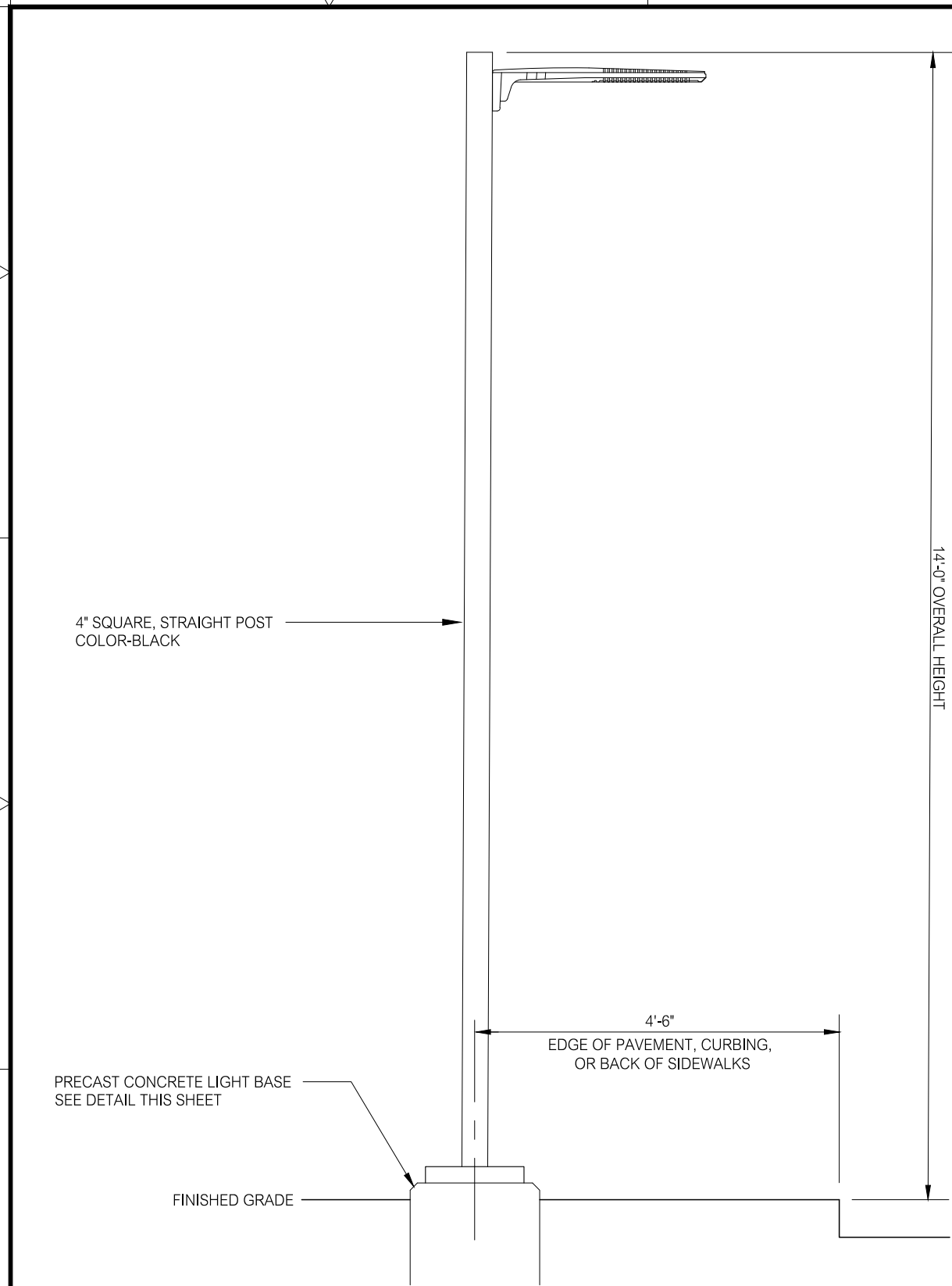
Summer Hill

Civil Engineers & Land Surveyors, P.C.
60 Wall Street
P.O. Box 708
Madison, Connecticut 06443-0708
Telephone: (203) 245-0722

PROJECT:

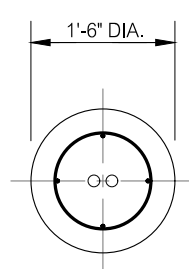
LYME-OLD LYME SENIOR CENTER
26 TOWN WOODS ROAD
OLD LYME, CONNECTICUT

DATE: 11-1-22	SHEET: GENERAL PLAN	SHEET NO.: C2.2
SCALE: 1"=20'		
DESIGNED: MJO		
CHECKED: LJM	FIELD BOOK: -	PROJECT NO.: 22-15

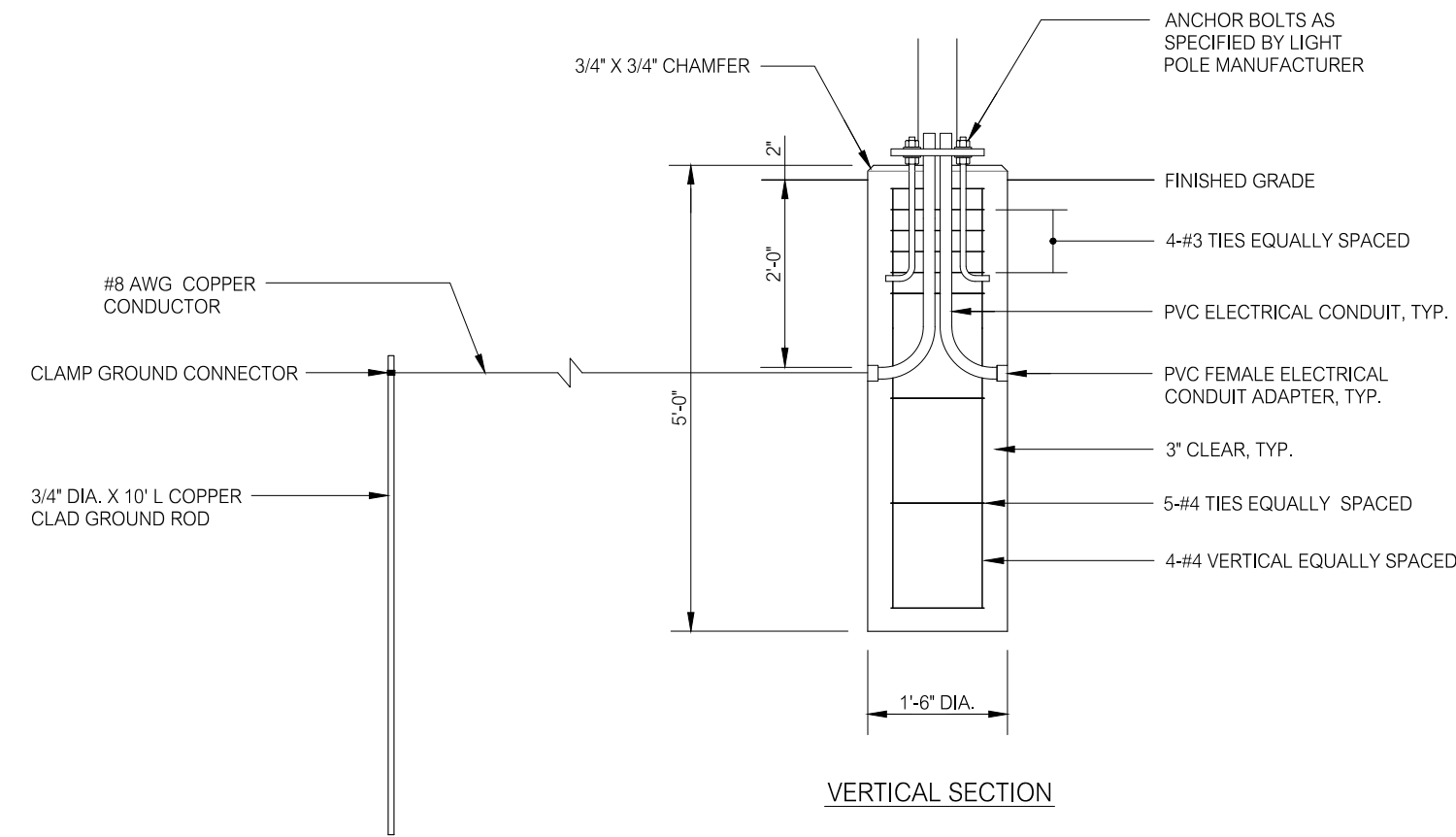


- NOTES:
1. LUMINAIRE: GARDCO ECOFORM ECF-S, FINISH COLOR-BLACK.
 2. CONTROL: PHOTOMETRIC ON AND TIMER OFF.
 3. REFERENCE SHEET C2.2-GENERAL PLAN FOR PARKING AREA LIGHTING LOCATIONS.

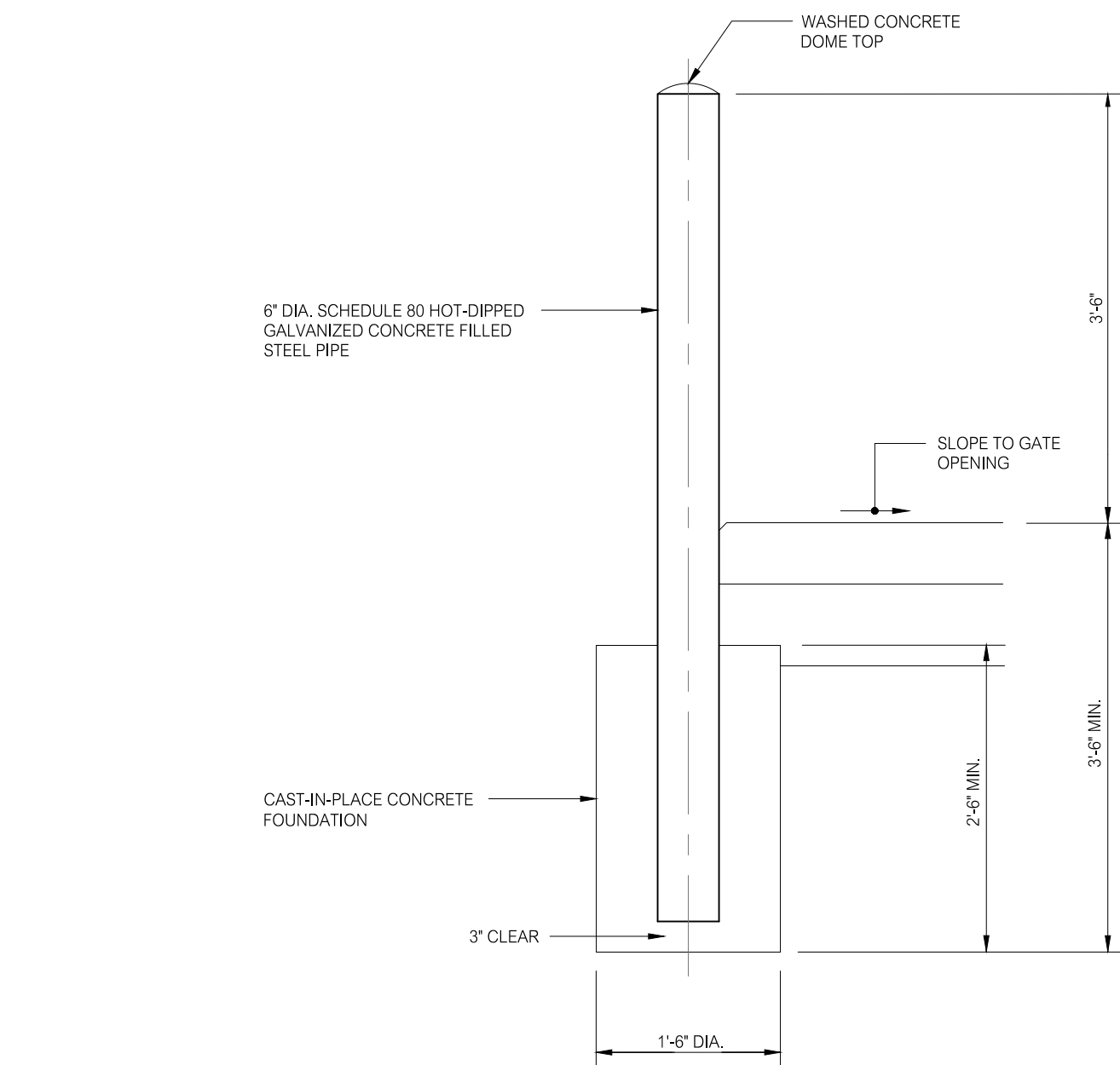
PARKING AREA LIGHTING
NOT TO SCALE



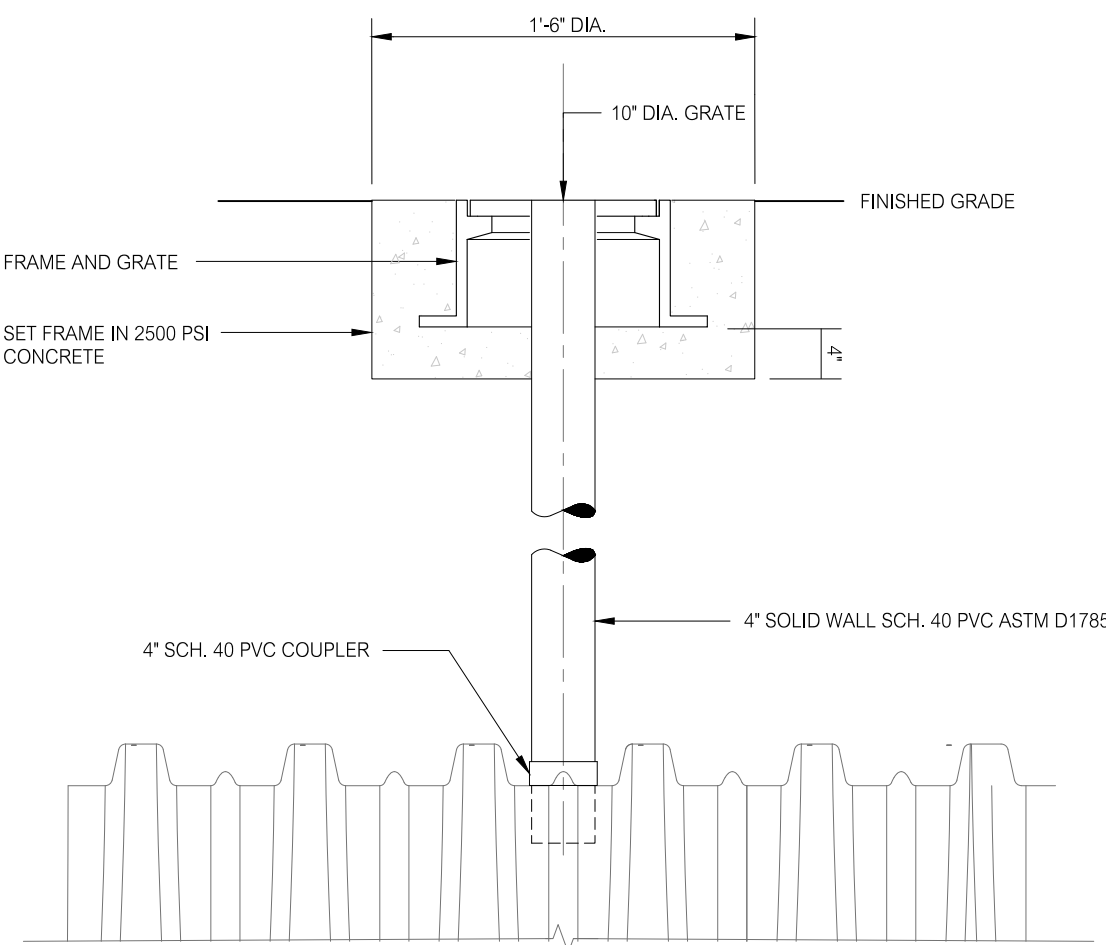
SECTION



PRECAST CONCRETE LIGHT BASE
1/2"=1'-0"

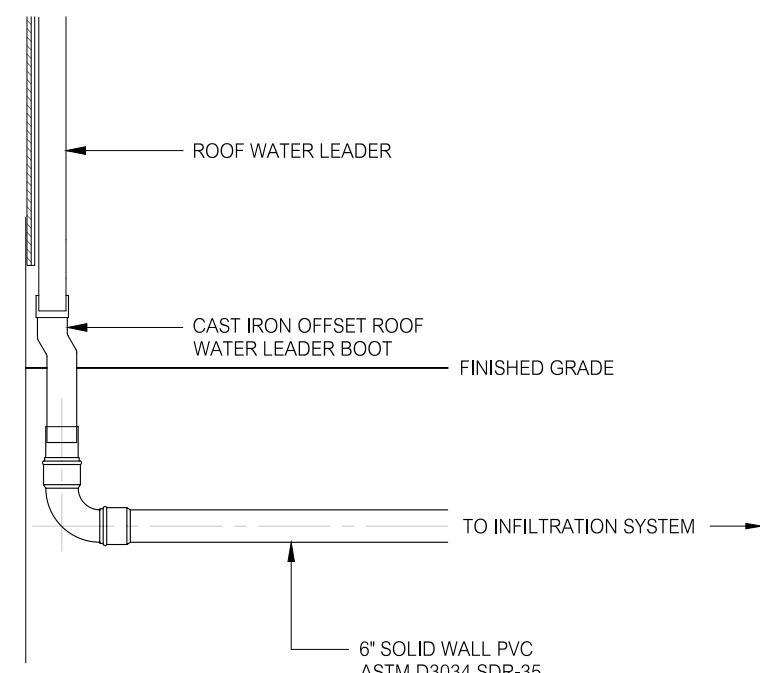


PIPE BOLLARD
3/4"=1'-0"



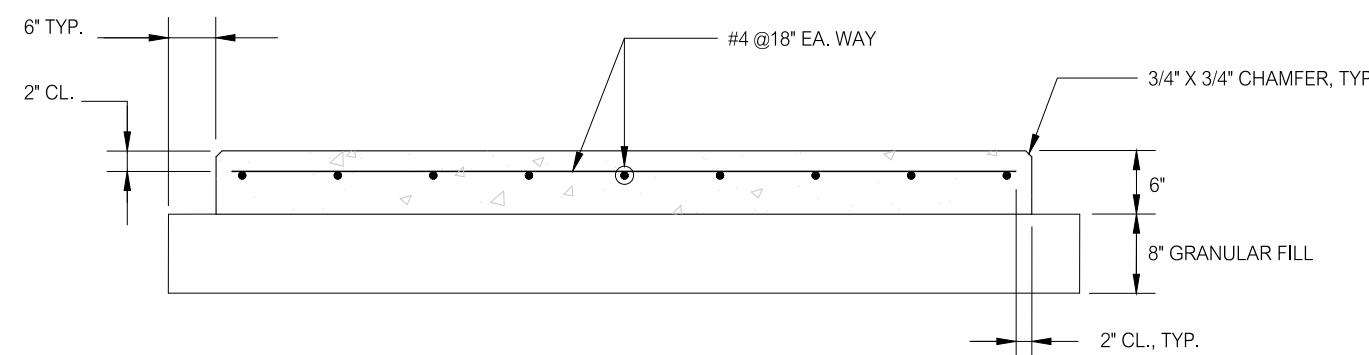
ELEVATION

CHAMBER OVERFLOW GRATE
NOT TO SCALE

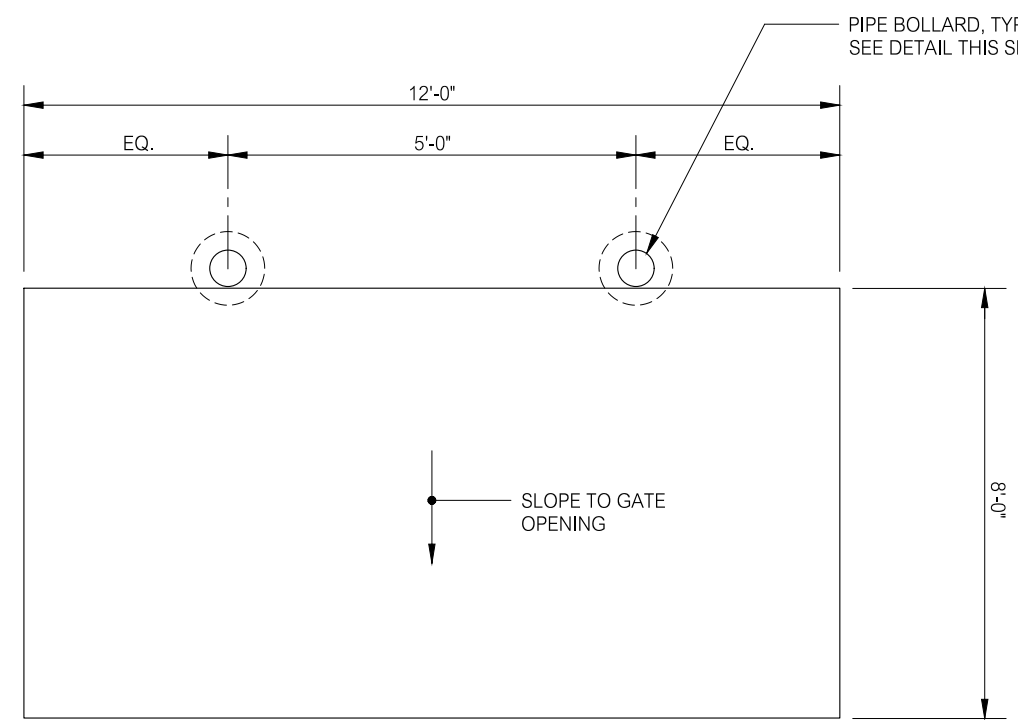


SECTION

BUILDING ROOF WATER LEADER CONNECTION
NOT TO SCALE

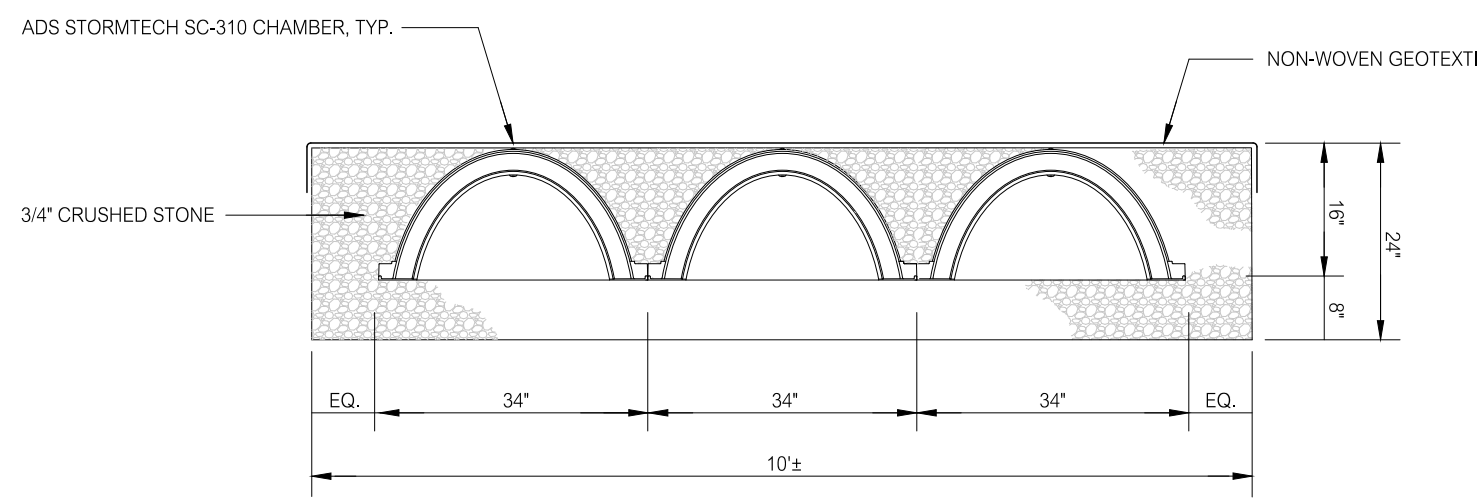


NOTE:
SLOPE CONCRETE PAD TOWARD GATE OPENING
FOR SURFACE DRAINAGE.

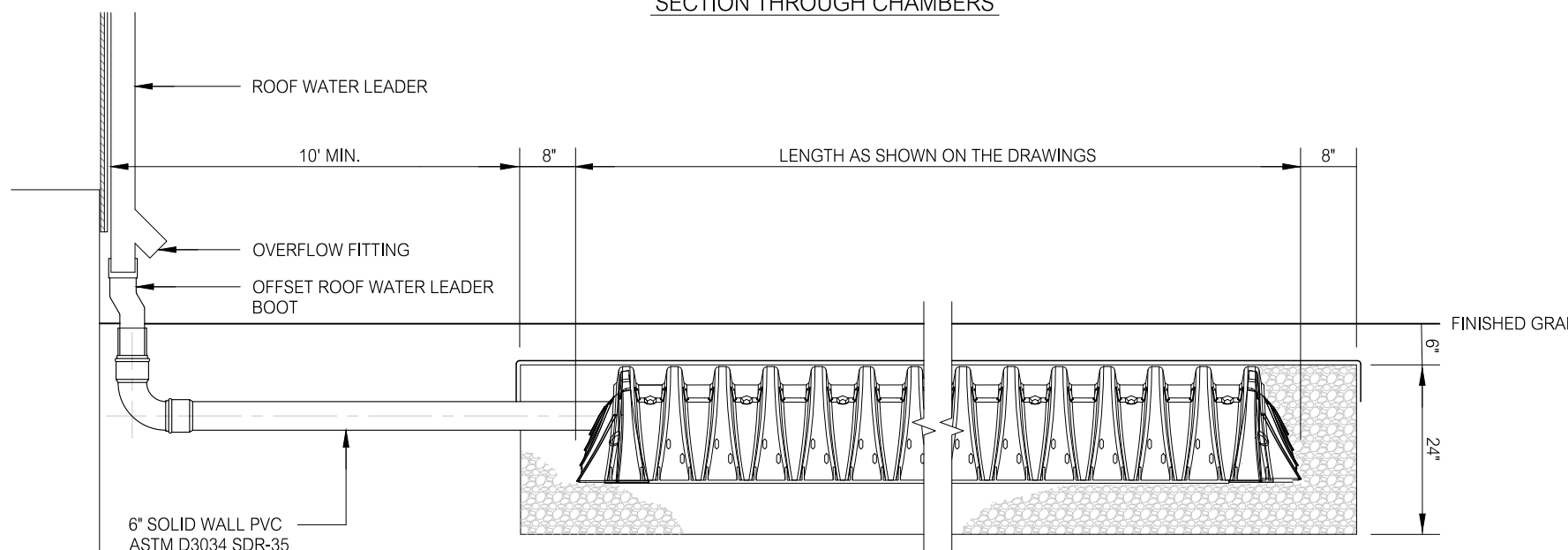


PLAN

WASTE AND RECYCLING RECEPTACLE AREA CONCRETE PAD
NOT TO SCALE



SECTION THROUGH CHAMBERS



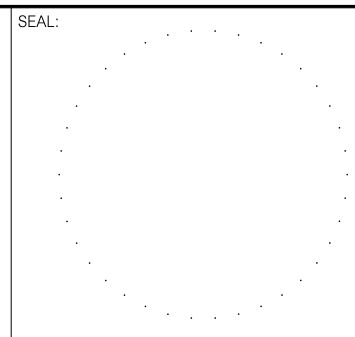
ELEVATION

TYPICAL ROOF WATER INFILTRATION SYSTEM
NOT TO SCALE

NOTE:
SEE SHEET C2.2 GENERAL PLAN FOR LOCATIONS OF INFILTRATION
SYSTEM(S) AND REQUIRED NUMBER AND ARRANGEMENTS OF
CHAMBERS.

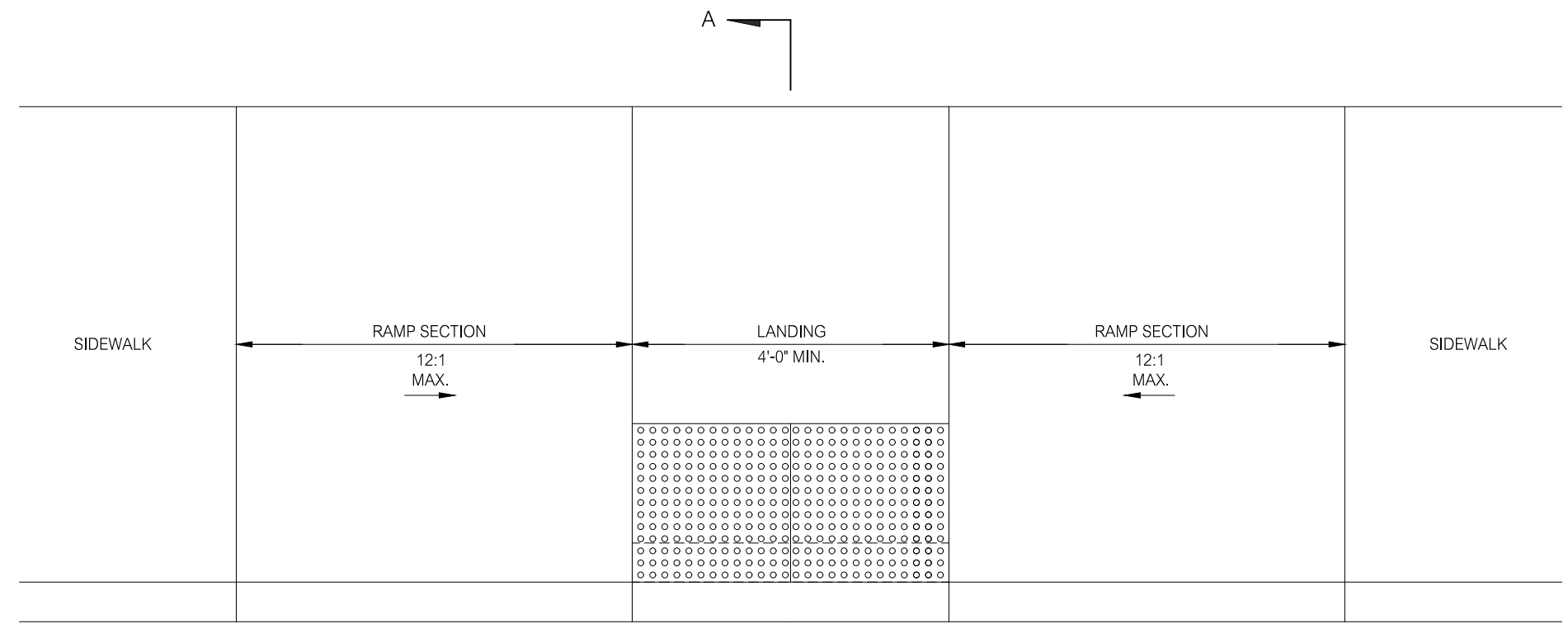
REVISIONS		TITLE:
3-8-23	DO PRICING SET	
NO.	DATE	DESCRIPTION
REVISIONS		

LAND
OF
THE
TOWNS OF LYME AND OLD LYME
26 TOWN WOODS ROAD
OLD LYME, CONNECTICUT

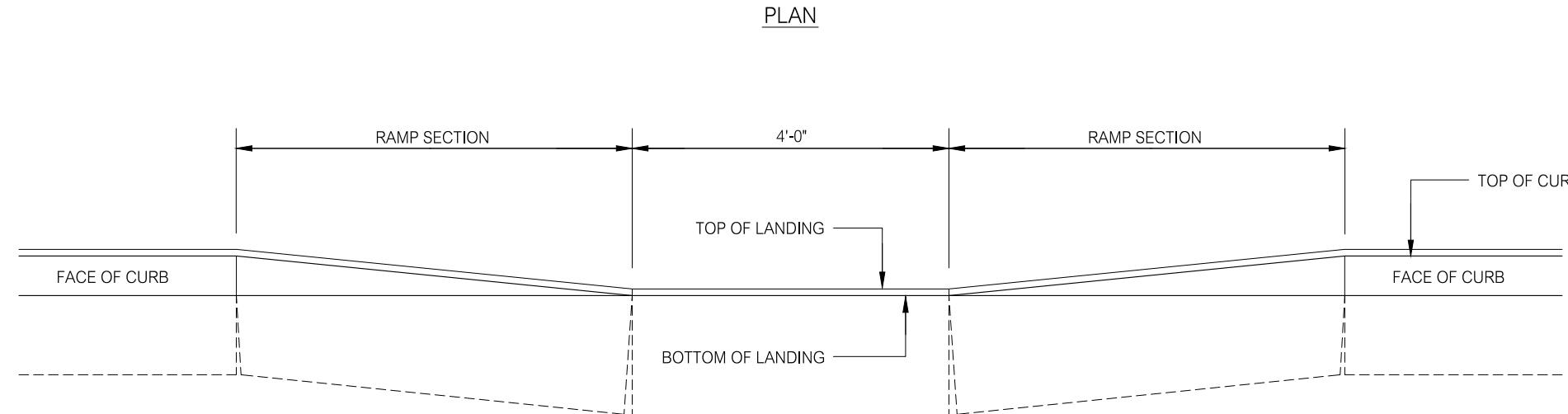
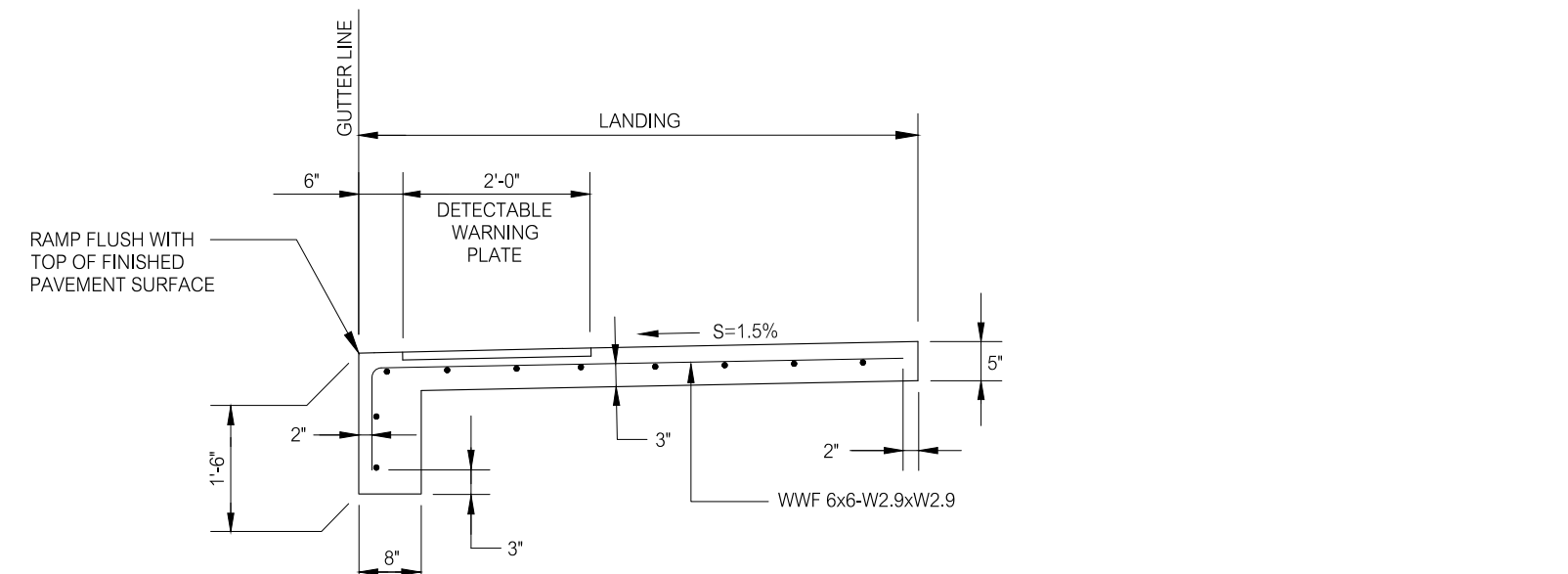


PREPARED BY:
Summer Hill
Civil Engineers & Land Surveyors, P.C.
60 Wall Street
P.O. Box 708
Madison, Connecticut 06443-0708
Telephone: (203) 245-0722

PROJECT:		SHEET NO.:	
LYME-OLD LYME SENIOR CENTER 26 TOWN WOODS ROAD OLD LYME, CONNECTICUT		C3.1	
DATE:	11-1-22	SHEET:	
SCALE:	AS NOTED	DETAILS	
DRAWN BY:	MJO		
CHECKED:	LJM	FIELD BOOK:	
		PROJECT NO.:	22-15



PLAN

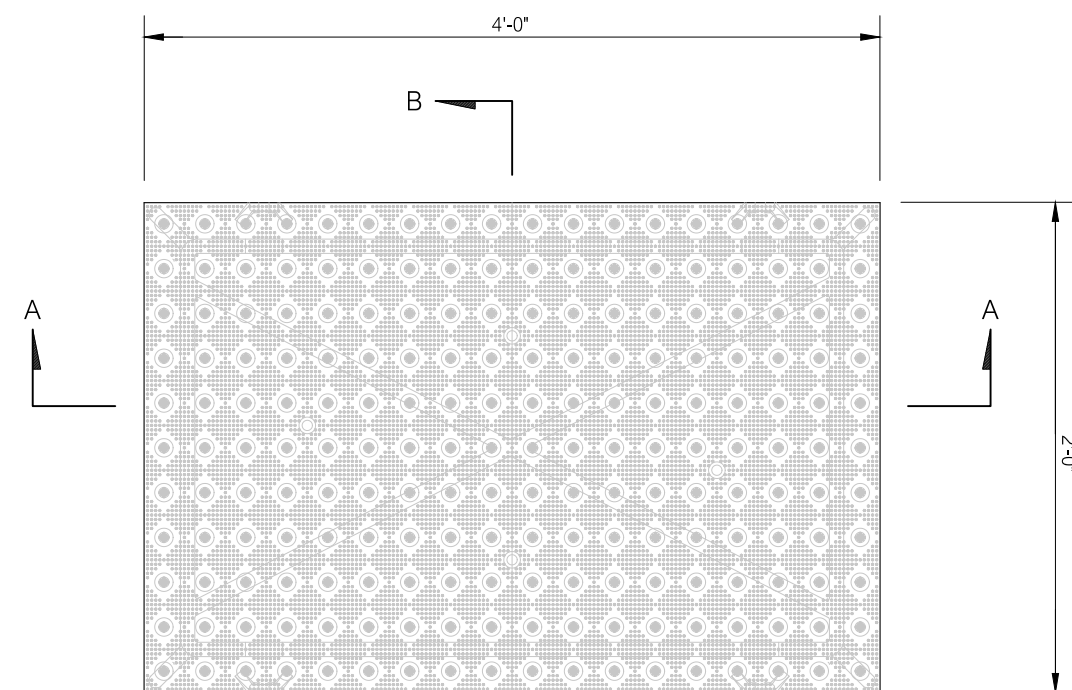
ELEVATION

SECTION A-A

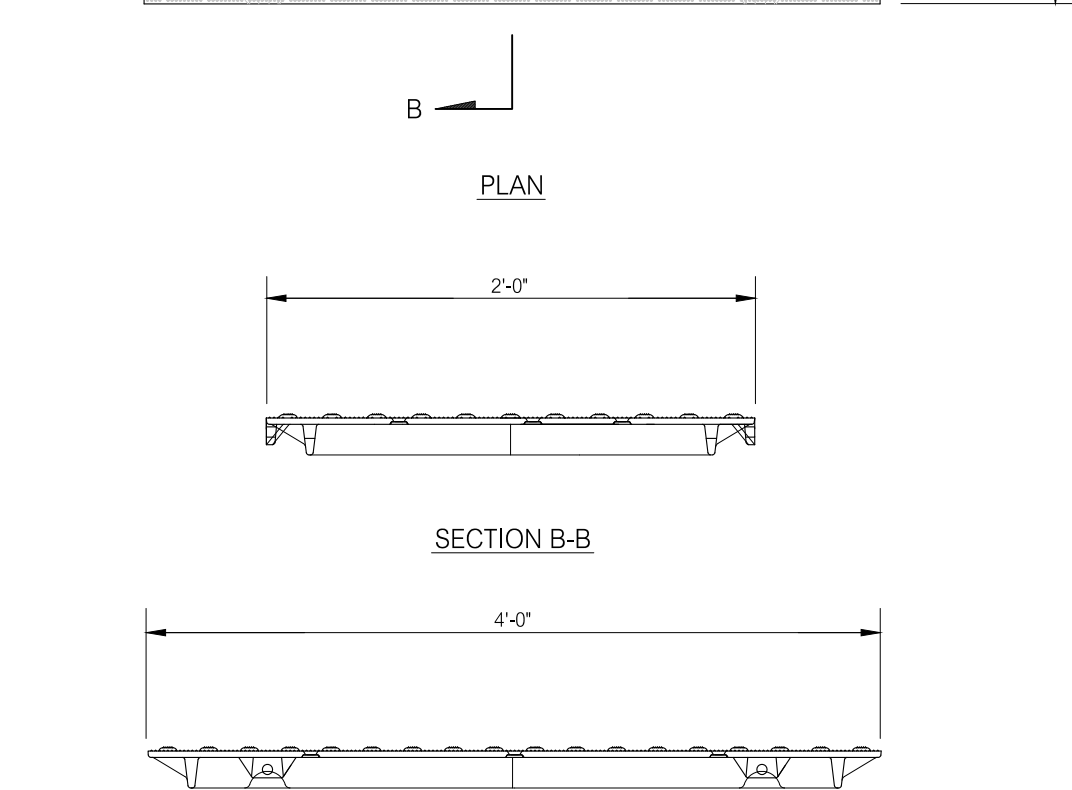
TYPE II SIDEWALK RAMP

$$1/2^{\circ}=1'-0''$$

- NOTES:
1. RAMP AND LANDING SLOPE VALUES SHOWN ARE DESIGN SLOPES WITH AN ALLOWABLE CONSTRUCTION TOLERANCE OF $\pm 0.5\%$. THE CONSTRUCTED RAMP AND LANDING SLOPE SHALL NOT EXCEED 8.33% AND 2.00% RESPECTIVELY.
 2. RAMP AND LANDING CROSS SLOPE DESIGN VALUES ARE 1.5% WITH A CONSTRUCTION TOLERANCE OF $\pm 0.5\%$. THE CONSTRUCTED RAMP AND LANDING CROSS SLOPE SHALL NOT EXCEED 2.00%.



TYPE II SIDEWALK RAMP



TYPE II SIDEWALK RAMP

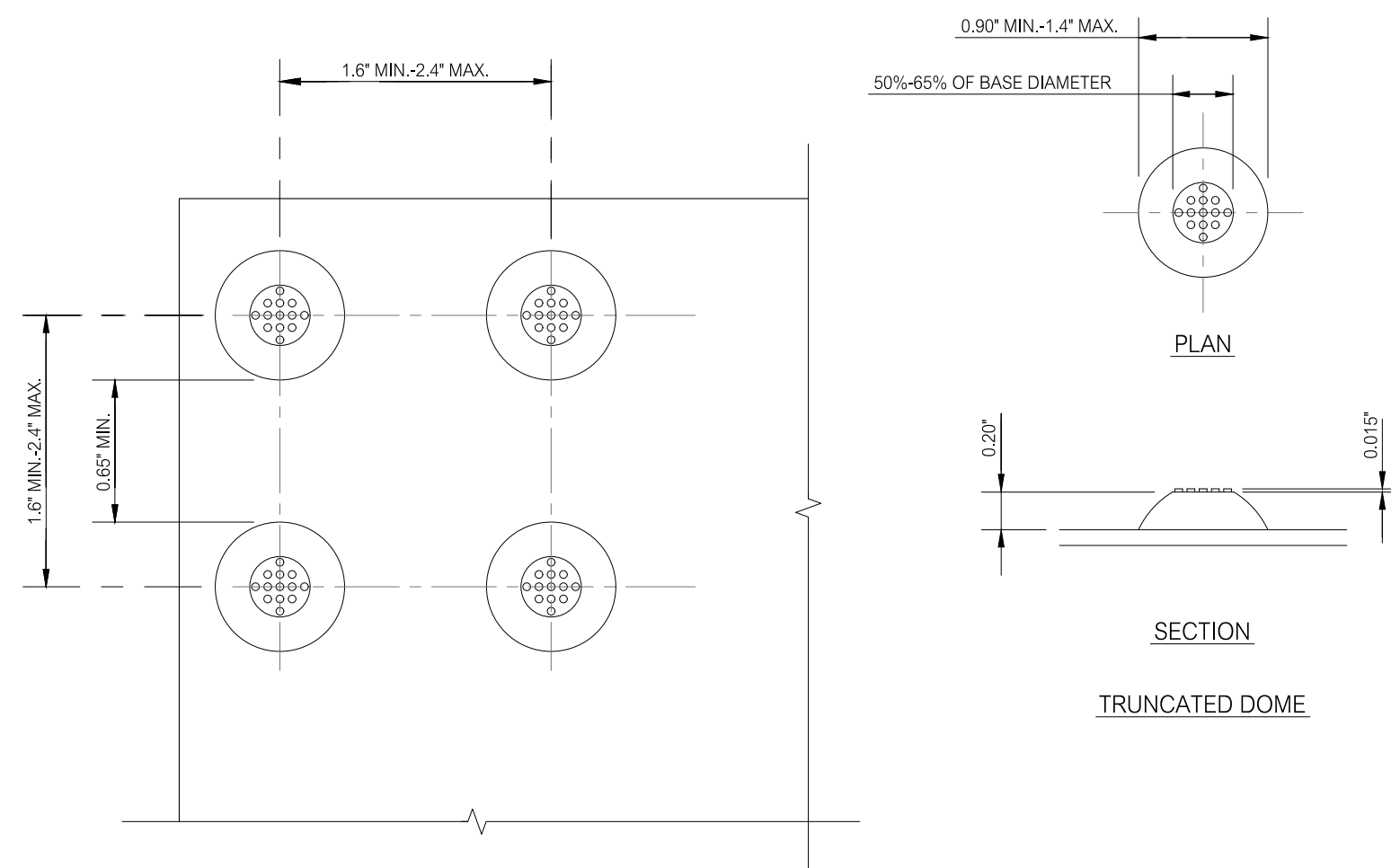


TYPE II SIDEWALK RAMP

TYPE II SIDEWALK RAMP

TABLE V

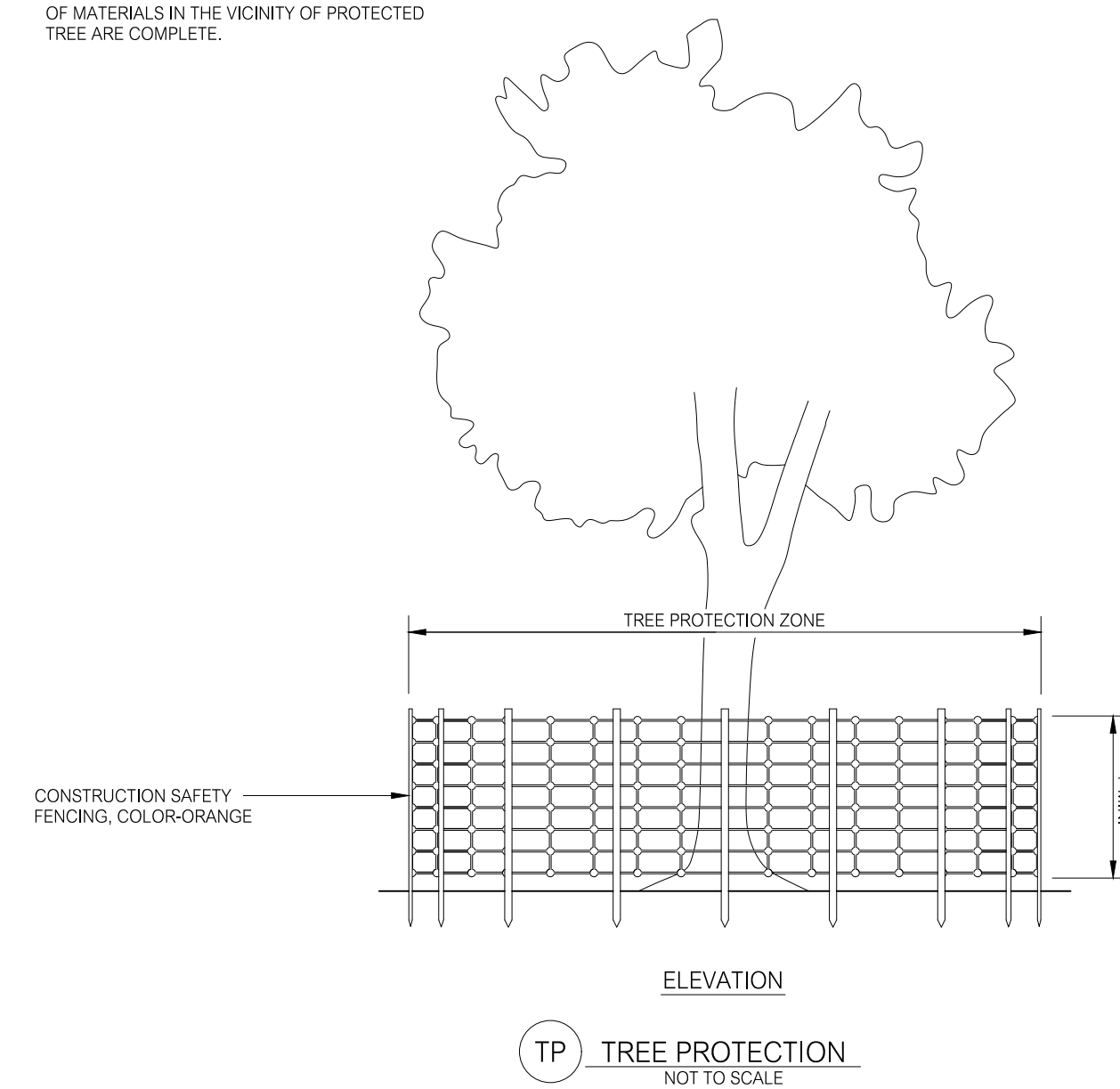
- NOTE:
CAST IRON DETECTABLE WARNING PLATE, NEENAH FOUNDRY
NEENAH WISCONSIN OR APPROVED EQUAL.



CAST IRON DETECTABLE WARNING PLATE

NOTE:
CAST IRON DETECTABLE WARNING PLATE, NEENAH FOUNDRY
NEENAH WISCONSIN OR APPROVED EQUAL.

C3.2



- LENGTH
AS INDICATED ON THE DRAWINGS

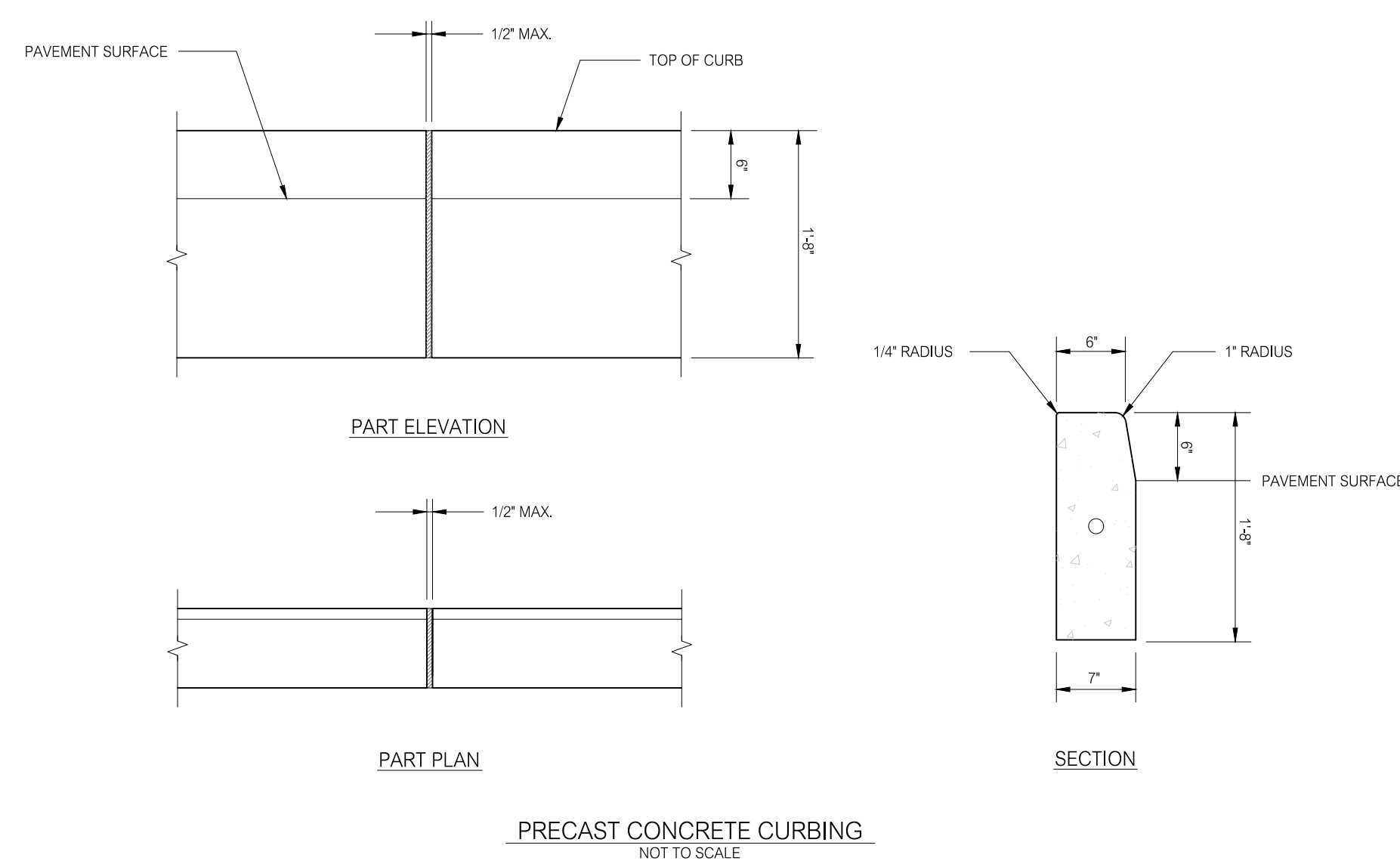
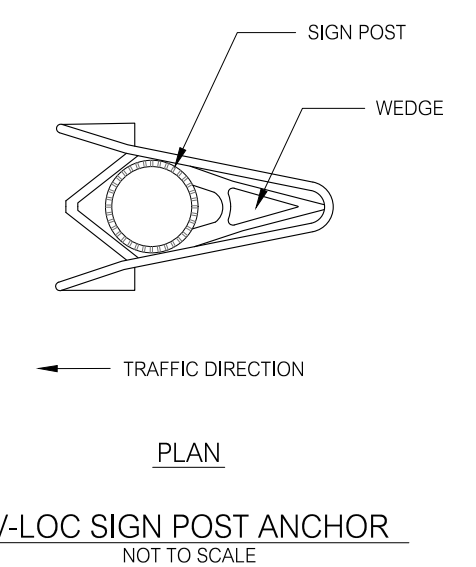
The image contains two technical drawings of parking stalls, labeled 'STANDARD PARKING STALL' and 'VAN RESERVED PARKING STALL'. Both drawings are oriented vertically on the page.

STANDARD PARKING STALL: This drawing shows a rectangular stall. The width (horizontal dimension) is labeled as 9'-0". The length (vertical dimension) is labeled as 18'-0". The stall is defined by two vertical lines and two horizontal lines.

VAN RESERVED PARKING STALL: This drawing shows a rectangular stall. The width (horizontal dimension) is labeled as 8'-0" MIN. The length (vertical dimension) is labeled as 18'-0". The stall is defined by two vertical lines and two horizontal lines. The interior of the stall is filled with diagonal hatching lines. A small rectangular area at the bottom right corner of the stall is labeled '3' TYP.' with a dimension line. A 45-degree angle is indicated at the bottom right corner of the stall, labeled '45°, TYP.' with a dimension line.

Below each drawing is a caption: 'STANDARD PARKING STALL' and 'VAN RESERVED PARKING STALL'. Below the captions is the text 'NOT TO SCALE'.

-
- A technical side-view diagram of a traffic sign post. The post consists of a vertical aluminum tube mounted on a base. At the top is a ball finial. A vandal-resistant bolt secures the finial to the tube. The mounting height is indicated as 8 feet from the finished grade to the center of the finial. The sign face is shown as a rectangular plate attached to the tube. Dimensions include 'VARIES' for the total height, 'SIGN FACE' for the panel area, and 'VARIES WITH ANCHOR TYPE' for the base section below ground level.
- BALL FINIAL, FINISH COLOR-BLACK
 - 8'
 - SIGN FACE
 - PROVIDE 5/16" ZINC PLATED STEEL VANDAL RESISTANT BOLTS, WASHERS AND NUTS
 - 2 3/8" O.D. FLUTED ALUMINUM TUBING POST
MODEL 203-01119, TRAFFIC & PARKING CONTROL CO., INC. OR APPROVED EQUAL,
FINISH COLOR-BLACK
 - IN SIDEWALK INSTALLATIONS, SEAL OPEN AREA AROUND SIGN POST AND ANCHOR
 - FINISHED GRADE
 - SIGN INSTALLATIONS IN SIDEWALKS:
VLOC® MODEL 23-VR1A SIGN POST ANCHOR,
TRAFFIC & PARKING CONTROL, INC. OR APPROVED EQUAL
 - SIGN INSTALLATIONS IN LANDSCAPED AREAS:
VLOC® MODEL 23-VR2 SIGN POST ANCHOR,
TRAFFIC & PARKING CONTROL, INC. OR APPROVED EQUAL
 - VARIES WITH ANCHOR TYPE
 - VARIES
- TRAFFIC SIGN POST**
- NOT TO SCALE



-

RESERVED PARKING SPACE SIGN
NOT TO SCALE

TITLE	SEAL:	PROJECT:
LAND OF THE TOWNS OF LYME AND OLD LYME 26 TOWN WOODS ROAD OLD LYME, CONNECTICUT		LYME-OLD LYME SENIOR CENTER 26 TOWN WOODS ROAD OLD LYME, CONNECTICUT
	PREPARED BY: Civil Engineers & Land Surveyors, P.C. 60 Wall Street P.O. Box 708 Madison, Connecticut 06443-0708 Telephone: (203) 245-0722	DATE: 11-1-22 SCALE: AS NOTED DESIGNED: MJD CHECKED: JRM FIELD BOOK: PROJECT NO.: 22-15
		SHEET: DETAILS SHEET NO.: C3.3



1. INSPECT BARRIER AT LEAST ONCE PER WEEK AND WITHIN 24 HOURS OF THE END OF A STORM WITH A RAINFALL AMOUNT OF 1/2 INCH OR GREATER.
2. REMOVE ACCUMULATED SEDIMENT WHEN IT REACHES 1/2 THE HEIGHT OF THE BARRIER.



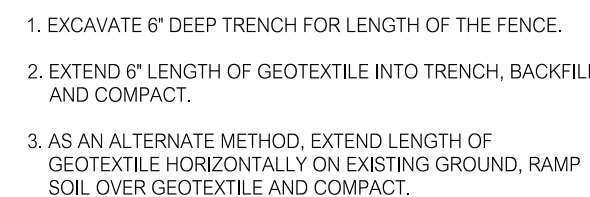
2. WHERE A DOUBLE ROW OF BARRIER IS CALLED FOR ON THE PLANS THE DISTANCE BETWEEN THE FIRST LINE OF STRAW BALES AND THE SECOND LINE OF GEOTEXTILE SILT FENCE SHALL BE A MINIMUM OF 2 FEET.



DRIVE STAKES TIGHTLY TOGETHER AND SECURE TOPS OF STAKES WITH CORD OR WIRE TO PREVENT FLOW-THROUGH OF SEDIMENT.



WHEN NOT INSTALLED ON THE CONTOUR OF
WHEN INSTALLED IN A DRAINAGE WAY, THE
ELEVATION OF POINTS B SHALL BE HIGHER
THAN POINT A.



2. REMOVE ACCUMULATED SEDIMENT WHEN IT REACHES 1/2 THE HEIGHT OF THE FENCE.



2. PLACE AND STAKE BALES. TWO (2) STAKES PER BALE.
 3. PLACE BALES SUCH THAT BINDINGS ARE ORIENTED AROUND THE SIDES OF BALES RATHER THAN ALONG THE TOP AND BOTTOM OF BALES.
 4. WEDGE LOOSE STRAW BETWEEN BALES.
 5. BACKFILL AND COMPACT THE EXCAVATED SOIL ON UPHILL SIDE OF BARRIER.
-
1. INSPECT BARRIER AT LEAST ONCE PER WEEK AND WITHIN 24 HOURS OF THE END OF A STORM WITH A RAINFALL AMOUNT OF 1/2 INCH OR GREATER.
 2. REMOVE ACCUMULATED SEDIMENT WHEN IT REACHES 1/2 THE HEIGHT OF THE BARRIER.




GEOTEXTILE FILTER BAG
NOT TO SCALE

1. GEOTEXTILE FILTER BAG SHALL BE PLACED IN A LOCATION THAT MINIMIZES INTERFERENCE WITH CONSTRUCTION ACTIVITIES, IS A MINIMUM OF 60 FEET FROM WETLANDS, WATERCOURSES AND WATER BODIES, IS AT A MINIMUM 1% SLOPE, PROVIDES FOR THE RELEASE OF FILTERED WATER WITHOUT CAUSING EROSION, AND PROVIDES FOR EASE OF ACCESS BY EQUIPMENT FOR CLEANOUT AND DISPOSAL OF TRAPPED SEDIMENT.
2. PLACE GEOTEXTILE FILTER BAG ON A "A" THICKNESS OF 3/4" CRUSHED STONE OR A "B" THICKNESS STRAW MAT.
3. FILTER BAG SIZE AND GEOTEXTILE TYPE IN ACCORDANCE WITH THE MANUFACTURERS RECOMMENDATIONS BASED ON THE ANTICIPATED PUMP DISCHARGE RATE.
4. GEOTEXTILE FILTER BAG SHALL BE CONSIDERED FULL AND REPLACED IN ACCORDANCE WITH THE MANUFACTURERS RECOMMENDATIONS.
5. DISPOSE OF GEOTEXTILE FILTER BAG BY REMOVING THE BAG AND DISPOSING OF IT OFF-SITE OR WHERE PERMITTED, TO AN APPROPRIATE DESIGNATED UPLAND AREA, CUTTING THE BAG OPEN AND REMOVING THE GEOTEXTILE FOR DISPOSAL, SPREADING THE SEDIMENT CONTAINS, AND SEEDING AND MULCHING THE SEDIMENT AREA.
6. UPON COMPLETION OF Dewatering Operations, RESTORE DISTURBED AREAS WHERE GEOTEXTILE FILTER BAGS HAVE BEEN PLACED.




1. CLEAR AND GRUB AREA AND REMOVE TOPSOIL BEFORE PLACEMENT OF CRUSHED STONE LAYER. A GEOTEXTILE MAY BE REQUIRED TO STRENGTHEN SUBGRADE SOILS AND TO PREVENT Stone MOVEMENT AND LOSS OF JOINTS WITHIN THE Stone ENTRANCE, WHERE REQUIRED.
2. LENGTH OF ENTRANCE MAY BE LIMITED BY SITE CONDITIONS. PROVIDE ADEQUATE WIDTH OF ENTRANCE AT ROAD INTERSECTION TO ACCOMMODATE THE TURNING MOVEMENTS OF CONSTRUCTION VEHICLES.
3. MAINTAIN ENTRANCE SO AS TO PREVENT TRACKING OR WASHING OF SEDIMENT ONTO ROAD. SEDIMENT THAT MAY BE TRACKED OR OTHERWISE DEPOSITED WITHIN THE ROAD SHALL BE REMOVED IMMEDIATELY.
4. MAINTENANCE MAY INCLUDE THE REQUIREMENT FOR TOP DRESSING THE CRUSHED STONE LAYER OR REPLACING THE FULL DEPTH OF THE CRUSHED STONE LAYER.
5. SHOULD SITE CONDITIONS BE SUCH THAT SOIL CANNOT BE REMOVED BY VEHICLES TRAVELING OVER THE ENTRANCE, THE TIRES OF VEHICLES MAY HAVE TO BE WASHED PRIOR TO VEHICLES ENTERING THE ROAD. ALL WASH WATER SHALL BE DIRECTED THROUGH AN APPROVED SEDIMENT TRAP.

	3-8-23	DD PRICING SET
NO.	DATE	DESCRIPTION
REVISIONS		

OF
THE
TOWNS OF LYME AND OLD LYME
26 TOWN WOODS ROAD
OLD LYME, CONNECTICUT

SEAL:



Summer Hill
Civil Engineers & Land Surveyors, P.C.
60 Wall Street
P.O. Box 708
Madison, Connecticut 06443-0708
Telephone: (203) 245-0722

26 TOWN WOODS ROAD
OLD LYME, CONNECTICUT

SCALE: AS NOTED		DETAILS
DESIGNED: MJO		
CHECKED: LJM	FIELD BOOK: *	

C3.4