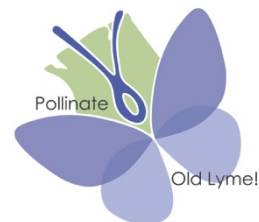


Buzzings

January 2021 Kickoff



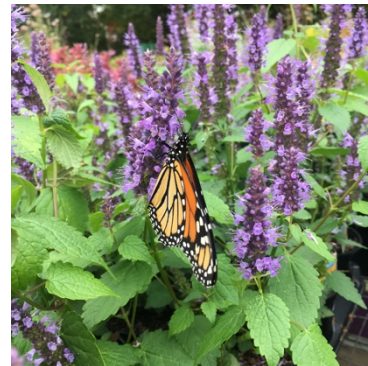
Thank you again for joining our *Pollinate Old Lyme!* launch. Whether you are a master gardener or a “new-bee,” we welcome you and are thrilled for your participation! In addition to the kickoff resources below, you are also receiving the PowerPoint slides presented by Suzanne Thompson during our January 26 launch.

What is a Pollinator Pathway?

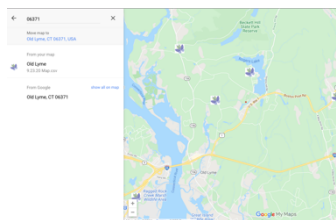
- Pesticide-free corridors of native plants that provide nutrition, habitat, and shelter for pollinators
- Protected corridors formed through a partnership of public and private properties
- Includes even the smallest of available green spaces such as flower boxes which can be part of the pathway

Bee on the Pollinator Pathway

As Suzanne shared in the presentation – your yard (or “mini-ecosystem!”) can be the perfect stop for birds and insects; and it does play a crucial role in the larger ecology of Old Lyme and beyond. Our goal is to create enough pollinator-friendly locations across Old Lyme that we are abuzz with caterpillars and worms (which birds feed their young), as well as other insects that wildlife depend on for survival. Birds, butterflies, bees and more are important to the pollination of plants.



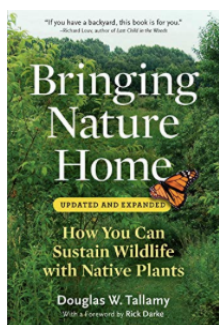
A Network of Pathways: Your home pollinator haven will be part of the *Pollinate Old Lyme!* Pathway, which is part of the Pollinator Pathway Northeast, which is in turn a pollinator partner in the National Pollinator Garden Network and its Million Pollinator Garden Challenge.



Once you have added native plants to your yard and eliminated herbicides and pesticides, you can add your own property to the national map by filling out the form here: <https://www.emailmeform.com/builder/form/1ucL5O6ohay8> which is part of www.pollinator-pathway.org.

Who and What we are Abuzz About

We love Doug Tallamy, Professor and Chair of the Department of Entomology and Wildlife Ecology at the University of Delaware. The author of several excellent books and an in-demand choice on the naturalist speakers' circuit, Tallamy is popular with people all along the pollinator learning curve. By acting on Tallamy's easy-to-understand and practical recommendations we can all help the environment.



Doug Tallamy's books are available at local libraries and bookstores (including e-books and audiobooks available online). We are excited to see his newest book "The Nature of Oaks" coming out in March 2021!

Check out Doug Tallamy's website and its best tips for starting a pollinator-friendly yard: <https://homegrownnationalpark.org/get-started> (Note: Homegrown National Park also has a national map; you are welcomed to add your property there as well; but, we are officially part of the pollinator-pathway.org map).

Doug Tallamy presented in 2020 (pre-pandemic) to the New Canaan Land Trust; and we thank them for making this presentation available for free viewing. Enjoy one of his lectures from the comfort of your home!

<https://www.youtube.com/watch?v=ZHURaRv78QY>

Other Great Organizations and their Websites

Read about the beginnings of the **Pollinator Pathway Northeast** (pollinator-pathway.org) as well as the movement at large in Connecticut Magazine's article "People Across CT are Creating a Pollinator Pathway for Bees and Butterflies"

https://www.connecticutmag.com/issues/features/people-across-connecticut-are-creating-a-pollinator-pathway-for-bees-and-butterflies/article_0329e478-c29b-11e9-a904-2328392d59b1.html

National Pollinator Garden Network: <http://millionpollinatorgardens.org>

Xerces Pollinator Conservation Program: <http://xerces.org/pollinator-conservation>

Native Plant Trust: <http://www.nativeplanttrust.org>

Wild Ones, Mountain Laurel Chapter: <https://wildones.org/chapters/chapters-in-connecticut/>

CT NOFA: <https://ctnofa.org>

CT Forest & Park Association: <https://www.ctwoodlands.org/>

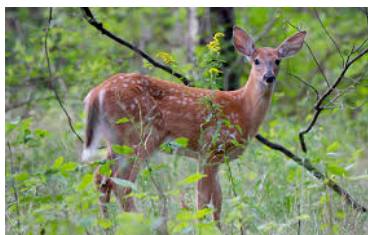
Bee Busy This Winter

Unless you are a snowbird, you are with us here in Old Lyme planning your activities for the warmer weather. Suzanne shared five key steps you can take while enjoying this period of hibernation:

1. Assess Your Yard (What's growing? Would you like to add rock and brush piles for hibernating insects? Do you want to replace some lawn with native plants?)
2. Get Ready to Remove Invasives (learn more about them at <https://cipwg.uconn.edu> or get "on the ground training" by joining Suzanne's Nip the Knotweed initiative)
3. Explore and Hike Old Lyme! (take pictures of what you like; look for native trees and wildlife; join a stewardship crew with the Old Lyme Land Trust or Open Space Commission)
4. Become a Citizen Scientist (join organizations such as FrogWatchCT, Wild Ones and Monarch Larva Monitoring Project to help track repopulations)
5. Explore Native Plants! Find native plants for our zip code at <http://nwf.org/nativeplantfinder>. Phone apps are available such as "Picture This" to help identify plants you come across on your walks. There are great plant lists on Pollinator-Pathway.org including Seasonal Guides for wildflowers and trees/shrubs here: <https://www.pollinator-pathway.org/native-pollinator-plants>



Pesky Problems

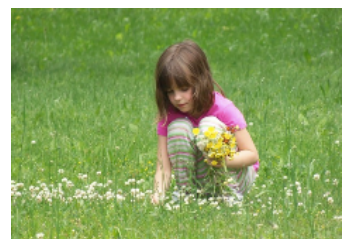


Oh deer, we know! Unfortunately native plantings are also often tasty plantings for our neighborhood deer. Fencing off an area is helpful; otherwise, spraying any of the nontoxic yet potent deer (and rabbit) repellents is an important step in staying native.

Planting multiples of a given species (milkweed for instance) means enough food for very hungry caterpillars and more butterflies for you to enjoy in your landscape.

Activities for Chicks in the Nest

We encourage families across Old Lyme to participate in *Pollinate Old Lyme!* We plan to share activities to try at home, and look forward to sharing news of opportunities for learning provided by organizations in town. Children and grandchildren can learn more with these family activities:



1. Go for a hike and explore nature. Try to find the bird you hear singing, look closely at tree trunks for caterpillars and other insects. Public trails in Old Lyme can be found here <https://www.oldlymelandtrust.org/copy-of-hiking-trails> and here <https://www.oldlyme-ct.gov/open-space-commission/pages/open-space-old-lyme>
2. Help a child plan their own pollinator flower pot or piece of garden. Some ideas can be found here <https://kidsgardening.org/planting-for-pollinators/>
3. Read about pollinators together. A great list for young readers can be found here: <https://shelftalkblog.wordpress.com/2019/06/21/learning-about-pollinators-for-kids/>
4. Our media savvy kids love video – here is a beautiful 4-minute look at pollinators in action: <https://thekidshouldseethis.com/post/hidden-beauty-of-pollination-louie-schwartzberg>
5. Visit the wildlife garden at the Cross Lane Playground. Search for pollinators!

Other family fun ideas can be found here:

<https://outdoorfamiliesonline.com/pollinator-garden-bees/>

Cross Pollination

There are wonderful organizations in Old Lyme that will play a role in *Pollinate Old Lyme!* Many have been providing these opportunities all along --- the *Pollinate Old Lyme!* initiative brings us all together:



Pollinator Havens and Gardens to Check Out this Spring:

- Cross Lane Wildlife Garden by the Lyme-Old Lyme Junior Women Club
- Barrier Garden at Haines Park (a barrier garden discourages geese)
- Lyme-Old Lyme school gardens
- The woodlands of the Old Lyme Land Trust and Old Lyme Open Spaces
- The Artists' Trail at the Florence Griswold Museum
- Old Lyme-PGN Library pollinator garden
- Lyme Art Association native plantings along the banks of the Mile Brook.

- Old Lyme Police Station flagpole pollinator garden – a Duck River Garden Club civic beautification site.
- Coming Soon: Pollinator gardens on the grounds of 100 Lyme Street (Roger Tory Petersen Estuary Center/CT Audubon Society)

Lectures, Workshops, and other Learning Opportunities:

- Roger Tory Petersen Estuary Center (CT Audubon)
- OL-PGN Library (*Pollinate Old Lyme!* printed resources will soon be available at the Library for those without easy computer access)
- Duck River Garden Club
- Old Lyme Conservation Commission
- Master Gardener Program (UConn Extension)
- Wild Ones, Mountain Laurel Chapter (see this native plant organization's Facebook page for monthly virtual programs and speakers)

Fundraiser and Retail Plant Sales (watch for updates due to pandemic precautions by all):

- Duck River Garden Club
- Florence Griswold Museum
- CT River Coastal Conservation District annual native plant sale (the 2020 sale was not held due to the pandemic, but watch for 2021 plans here: <https://www.conservect.org/product-category/crccd/>)
- We are reaching out to local nurseries and will provide a more detailed list of local retail options in the coming weeks. A statewide list (albeit Fairfield County-centric) can be found here: <https://www.pollinator-pathway.org/where-to-buy-native-plants>

Community Service and Stewardship:

- Lyme-Old Lyme High School Environmental Club (students recently built bluebird houses for Open Space properties and cleared a viewing vista on the Ames Preserve)
- Town of Old Lyme, including the Tree Commission, Conservation Commission, Open Space Commission, and Kindness Committee
- Stewardship opportunities through the Old Lyme Land Trust
- Nip the Knotweed Initiative (<https://www.facebook.com/NiptheKnotweed/>)



Help Spread the Word!

We appreciate and need your help in spreading the word across Old Lyme! Recruit your neighbors and friends; engage your book club to learn more; invite Old Lyme friends to “like” our Facebook page. We value saving paper; but, if you have a friend or neighbor who doesn’t have computer access, please consider sharing with them a print-out of this newsletter. Take photos as the seasons unfold and share them with us as we enthusiastically work together and learn from each other.

We will let you know when our webpage is “live” on Pollinator-Pathway.org so you can find our updates and resources.

Send us your questions at PollinateOldLyme@gmail.com or post them to our Facebook page and we will provide the answer or help find someone who will know the answer!

PS: Take a closer look at our logo --- the green background is a geographic outline of the Town of Old Lyme!

Pollinate Old Lyme! is organized and led by the Board of Selectmen's Sustainable Old Lyme Team. Sustainable Old Lyme is responsible for documenting and leading initiatives as part of the Sustainable CT certification process. *Pollinate Old Lyme!* Co-Leads are Suzanne Thompson and Cheryl Poirier. To contact us, email PollinateOldLyme@gmail.com. The *Buzzings* newsletter was created for *Pollinate Old Lyme!*

