

# ANNUAL REPORT

OLD LYME, CONNECTICUT

LOOK AT US NOW!



New London County  
2<sup>nd</sup> Congressional District  
20th Senatorial District  
37<sup>th</sup> Assembly District

## 2003-2004

*The front cover shows the blueprint of Mile Creek School renovations.*

*Back Cover*

*Top Left - New compass design greets visitors inside the front lobby of Center School.*

*Top Right - Speaker Bob Dunn, Chairman of the Town Woods Building Committee; (left to right) Old Lyme First Selectman Tim Griswold; State Representative Marilyn Giuliano (R - Old Saybrook); and Lyme First Selectman Bill Koch at park opening September 19. (Photo courtesy of Olwen Logan, LymeLine)*

*Middle Left - Lyme-Old Lyme Middle School entrance showing handsome new green-clad windows*

*Middle Right - Lyme-Old Lyme Middle School—front lobby, with art on display*

*Bottom Left - Mile Creek School central office showing the reception desk, mail area, and work room*

*Inside Front Cover*

*Top - Reconfigured bus entrance to Center School is safer AND more convenient!*

*Middle Left - Old Lyme Parks and Recreation chairman Don Bugbee speaks at the Town Woods Park dedication, with Old Lyme First Selectman Tim Griswold. (Photo courtesy of Olwen Logan, LymeLine)*

*Middle Right - The wing that originally ended in locker rooms now boasts a student-drawn mural and culminates in an exit.*

*Center Insert - Lyme-Old Lyme Middle School gymnasium floor boasts tribute to Old Lyme's team, the Wildcats.*

*Top Right - This building at Town Woods Park will be ready in spring 2005 to provide a concession area, rest rooms, office, and storage space.*

*Bottom Right - Mile Creek School media center as seen from behind the circulation desk—book storage, and the computer lab in the rear corner*

*Published by the Old Lyme Board of Finance, Mark Diebolt, Chairman  
Compiled and Edited by Michele Smith Dickey  
Materials Expediting and Production Assistance by Michele Hayes-Finn  
Cover Design by A.C. Proctor, Typesetting and Printing by Essex Printing,  
18 Essex Industrial Park Road, Centerbrook, CT 06409*

# Contents

---

|   |                   |
|---|-------------------|
| Introduction .....  | 3                 |
| Selectman's Report.....   | 8                 |
| American Legion Post #41 .....                                  | 25                |
| Appointed Officials.....  | 14                |
| Assessor.....   | 25                |
| Board of Finance .....  | 26                |
| Building Department .....                                       | 27                |
| Cable Advisory Council.....                                     | 28                |
| Citizen of the Year.....  | 29                |
| Commission on Aging.....  | 31                |
| Connecticut River Estuary<br>Regional Planning Agency .....     | 30                |
| Connecticut River Gateway Commission ...                        | 32                |
| Conservation Commission .....                                   | 33                |
| Deaths 2002-2003 .....  | 23                |
| Eastern Conn. Regional Tourism District....                     | 35                |
| Economic Development Commission .....                           | 33                |
| Elected Officials .....   | 12                |
| Election Results—November 4, 2003.....                          | 20                |
| Estuary Council of Seniors, Inc. ....                           | 34                |
| Estuary Transit District.....                                   | 35                |
| Fire Marshal.....   | 36                |
| Health Department.....  | 37                |
| Historic District Commission .....                              | 37                |
| Lyme Historical Society .....                                   | 38                |
| Lyme-Old Lyme High School .....                                 | 40                |
| Lymes' Senior Center.....                                       | 39                |
| Lymes' VFW Post 1467.....                                       | 43                |
| Lymes' Youth Service Bureau.....                                | 43                |
| MacCurdy Salisbury<br>Educational Foundation, Inc.....          | 44                |
| Marriages .....   | 21                |
| Municipal Agent for the Elderly .....                           | 45                |
| Old Lyme Affordable Housing Corporation.                        | 45                |
| Old Lyme Animal Shelter<br>& Animal Control Department.....     | 47                |
| Old Lyme Conservation Trust Inc.....                            | 46                |
| Old Lyme Fire Department .....                                  | 48                |
| Old Lyme Harbor<br>Management Commission .....                  | 49                |
| Old Lyme Open Space Committee.....                              | 47                |
| Old Lyme Parks and Recreation.....                              | 50                |
| Old Lyme Pension Committee .....                                | 51                |
| Old Lyme-Phoebe Griffen Noyes Library ....                      | 52                |
| Old Lyme Shellfish Commission .....                             | 51                |
| Old Lyme South End Volunteer<br>Ambulance Association, Inc..... | 53                |
| Old Lyme Tree Commission.....                                   | 54                |
| Old Lyme Visiting Nurse Association, Inc...                     | 55                |
| Organizational Chart.....                                       | 11                |
| Planning Commission.....  | 56                |
| Probate Court .....   | 57                |
| Regional School District 18.....                                | 58                |
| Registrars of Voters .....                                      | 60                |
| Regularly Scheduled Meetings.....                               | 7                 |
| Rogers Lake Authority .....                                     | 60                |
| Senior Services<br>Information .....                            | Inside Back Cover |
| Social Services Department .....                                | 61                |
| Tax Collector .....   | 62                |
| Treasurer .....   | 62                |
| Town Information.....   | Back Flap         |
| Town Meetings.....  | 63                |
| Water Pollution Control Authority .....                         | 66                |
| Zoning Board of Appeals .....                                   | 67                |
| Zoning Commission .....   | 68                |

---

### Look At Us Now!

Where DOES the money go?" may be a common question in our private lives. When it comes to how the town's money is spent, even with the financial statement in front of us, thousands upon thousands of dollars may go toward things that don't really "show."

This past fiscal year, however, saw the culmination of two major projects that are large and physically tangible and will be a source of pride for years—generations—to come. One of these is Town Woods Park, the solution to our long-overused playing fields. More than three years from dream to reality, the successful culmination of the work of so many is described following this introduction by Bob Dunn, Chairman, Town Woods Building Committee.

The second project, vaster in proportion, is the Lyme-Old Lyme Public Schools Building Project. Historically, the school budget has been a politically hot topic in town. Summer residents are asked to pay higher taxes to support schools their children do not attend, just as families without children or whose children are grown are asked to do as well. But as John Rhodes, Director of Facilities for Regional District 18, points out, "The school district is a separate municipality from the Towns of Lyme and Old Lyme, but we're all in this together—it's the same kids. The community benefits when the school district and towns work together seamlessly to bring about what's best for the children and the community."

The Old Lyme Public Schools Building Project renovated four schools—Mile Creek (preschool through grade 2), Center School (grades 3 through 5), Lyme-Old Lyme Middle School (grades 6 through 8), and Lyme Consolidated School (preschool through grade 5). About sixty Old Lyme students attend the Lyme Consolidated School. As with most shared projects, Old Lyme paid approximately 80 percent of the cost. While Lyme-Old Lyme High School was removed from the renovation project when it was scaled down from \$54 million to \$34 million, it has benefited from some campus-wide improvements to all of the buildings located on or near Lyme Street. Kastle Boos have been the architects for all buildings.

New water systems have been put in at

all the schools, making water coolers (and cascading wastebaskets of paper cups beside them!) a thing of the past. Center School, Middle School, and the high school all utilize a 125,000-gallon storage tank, located on a hill behind the high school parking lot; the town hall and firehouse will use this system as well after receiving state approval and making the final connections. This tank is supplied by a well field of four wells and also supplies a fire sprinkler system in the Middle and Center Schools. The system will work using gravity alone in case of an emergency.

These three school buildings also have a new septic treatment plant "that meets the State Department of Environmental Protection requirements for safe disposal of waste water," according to Rhodes. This building is located behind the high school.

A welcomed change is clearly evident to anyone entering this campus by Center School; there is now a two-lane entry with median fenced divider. This allows children to get out of cars or buses in a protected area and buses to pick up or discharge passengers while entering traffic can still proceed in the left lane, alleviating some traffic tie-ups. This new arrangement was made possible by the Old Lyme Grange's willingness to "swap" approximately seventy square feet of property to accommodate the new left lane.

Center School has a new roof and new windows. Just inside the front doors is a new central office, with windows to the front entry providing added security and in keeping with a standard educational program. To the left, the former well-known library is now a fifth-grade classroom, but the dark paneling still remains. The library – now known as the media center – has moved to the right front corner. Rhodes explains, "In every school we renovated we used the same formula for the same space. For example, every new media center has a circulation desk, office space, workroom, seating area, book storage space, and mini computer lab."

There's a renovated art room, a big improvement over "art on a cart" that was Mrs. Watt's realm for too long. Now there's a bright room with a storage room, sink, and separate room for a kiln.

## Introduction *(continued)*

---

Center School's faculty lounge is a far cry from the tiny cramped room it formerly occupied. It's now the one large room that is closest to the Middle School, with its facing wall entirely windows. This space was formerly a music room and the school psychologist's office, but it made for a poor classroom due to all the windows looking onto a busy area—"it's like Grand Central outside," notes Rhodes. It makes for a fine faculty room and conference room and has a copy machine, work area, kitchenette, outside phone lines, and a bathroom, though not all have this feature.

Things have changed outside, too. The play area is covered with a special resilient mulch. The large, multifunctional playscape is gone, replaced by a number of individual apparatuses that each focus on different areas, such as upper- or lower-body strength. And all are handicapped accessible.

The Lyme-Old Lyme Middle School has a new roof, new windows (attractively green-clad in front), and a bright new front foyer and central office. The auditorium has been renovated. Besides new seats, carpeting, and stage curtain, there are now sound-attenuating panels along the back, theatrical lighting and sound systems, and...air conditioning!

Near the gymnasium, the hall that formerly led only to locker rooms is now an entrance from the new parking area.

Although the high school was not renovated, it did receive the campus-wide benefit of the new water system and septic treatment plant, along with air conditioning that was added to educational spaces.

There's a new entrance at Mile Creek School that brings visitors into a foyer between the new media center and the new central office. Mile Creek is one of the two schools that have building additions, with four smaller instructional classrooms added as well. And spaces have been reconfigured. A corridor

now stretches between what were two ends of hallways, forming a central courtyard and offering easier emergency egress. Classrooms were made for specials (art and music) in keeping with modern educational theory, which formerly were taught within the classrooms. Now Mrs. McDonald has a huge art room that was formerly the library; she's very happy with the versatile space, filled with tables that can be put together or taken apart, and with lots of storage space. Rhodes says, "We didn't build classrooms but reconfigured the building to make available all of the classroom spaces."

Up the road to Lyme Consolidated. There's a new main monitored entrance, with all core facilities like the school nurse and psychologist centralized just inside. Stairways to the downstairs cafeteria and upstairs gymnasium have been improved and an elevator added. And the entrance is beautified by a mural of favorite Lyme scenes—like Tiffany's cows or Hamburg Fair attractions—drawn by an artist but painted with cotton swabs by students and families alike—a joint labor of love.

Lyme is the second District 18 school to have additions—four full-sized instructional classrooms and a new media center in addition to the entrance and administrative areas.

All four buildings received new heating systems and controls. Every classroom now has a telephone, television outlets, and access to the school district computer network. Asbestos was removed and new fire alarms installed. Every school has new lighting both inside and out, including emergency exit lighting and upgraded exit paths. All four schools have improved parking and bus and parent drop-off areas. There is new flooring throughout, and kitchens have been upgraded to meet health codes. Many classrooms in all four schools have new cabinets and counter tops.

The tax dollars that went into renovations to Regional District 18 schools and Town Woods Park have been monies well spent!

## Introduction *(continued)*

### Town Woods Park Opens on September 19, 2004

Bob Dunn

*Chairman, Town Woods Building Committee*

It's been a long time coming, but the three irrigated soccer/lacrosse fields with corresponding parking and landscaping finally became a reality on the opening day of Town Woods Park – Sunday, September 19, 2004. Opening-day ceremonies included a \$1000 donation for a set of soccer goals by Peter Knox and Peter Manley of the Old Saybrook Rotary Club and speeches by Tim Griswold (First Selectmen of Old Lyme), Bill Koch (First Selectman of Lyme), Marilyn Giuliano (State Representative), Eileen Daily (State Senator), Bob Dunn (Chairman of the Town Woods Building Committee), and Don Bugbee (Director of Old Lyme Parks and Recreation). Soccer games commenced and free hot dogs, pizza, and soda were generously donated by Ken Kitchings of Coca-Cola, Kenny Coffee of Coffee's Market, Ron Laplante of A&P, and Anthony Baselio of Illiano's.

The credit for the successful completion of the Town Woods Park project was the result of three major factors:

1. the volunteer spirit and support of members of the communities of Lyme and Old Lyme,
2. the financial support of the towns and the generous grant support of the state, and
3. the excellent work done by professionals in the design and construction of these fields

First was the community spirit and volunteerism. In the spring of 2001, the LOL Soccer Club donated \$5,000 to establish a volunteer practice field at Town Woods and, later at the opening, donated a set of soccer goals for the park. On Saturday, April 14, 2001, over eighty volunteers – moms, dads, and kids mainly associated with the soccer and lacrosse clubs – spent the day clearing, cutting, raking, and adding topsoil and grass seed to create a practice field. Soda and food were donated to the volunteers by the same merchants from the community – Ken Kitchings, Ron Laplante, Kenny Coffee, and Anthony Baselio. The success of that volunteer day helped to set in motion a process to make this park a reality.

The next important development came from the commitment of the towns and the

involvement of professionals on the project. During the spring of 2001, the selectmen and the Board of Finance of Old Lyme, which at that time was chaired by Gail Roth and is now chaired by Mark Diebolt, decided to set aside funds for the development of professionally designed fields at Town Woods. Then an engineering firm was needed to design the fields. Several qualified firms were interviewed by a small group of volunteers headed by Tom Schellens, Bill Crandle, and Tim Griswold. Vollmer Associates LLP was hired. John Eberle and Tom Hammerberg from Vollmer Associates have done a great job in working with everyone on this project to produce a top-quality facility.

Tim Griswold then initiated discussions with Bill Koch, the First Selectman of Lyme, to find out if Lyme was interested in getting together with Old Lyme in the development of the park. Previously, the two towns successfully got together to make the Lyme-Old Lyme Senior Center a reality. Koch and Griswold then applied for STEAP (Small Town Economic Assistance Program) grants from the state and were pleasantly surprised when the towns received a total of \$950,000 in grant money. The Lyme Board of Finance, chaired by Gary Reynolds, also committed funding for the project. Town funding for the park was applied to the project after the STEAP money was spent, on a similar basis to the Senior Center project, 75 percent from Old Lyme and 25 percent from Lyme.

Next there was the commitment of the community volunteers to work with the professionals to build the park. At the end of 2001, the selectmen chose members for the Town Woods Building Committee to work with Vollmer Associates to help design, build, and maintain this facility. This committee also worked with the Parks and Recreation commissions of both towns to make sure this facility would meet the needs of the community programs.

Ten building contractors submitted bids for this project. Following days of due diligence, the Town Woods Committee selected Todd Machnik, of Machnik Brothers, Inc., to build this facility. John Roach served as the Clerk of the

## Introduction *(continued)*

---

Works. Groundbreaking for the fields took place on June 18, 2003. At that ceremony, Leslie Crolius, Chairwoman of the Lyme-Old Lyme Junior Woman's Club, presented a donation of \$5,000 on behalf of their organization to the park project. Once the fields were built, Ron Tyler of Country Lawn and Gardens was chosen to maintain the fields.

The communities are grateful to the members of the Town Woods Building Committee. These individuals volunteered many evenings and Saturday mornings to work on this project. The project came in \$131,000 under budget, about 9.5 percent under the \$1.4 million allotted budget, and on time for this fall's soccer season! The members of the Town Woods Building Committee include Glynn McAraw, who is also the chair of Old Lyme Parks and Recreation; Don Bugbee and Jerry Winzer, the Directors of Parks and Recreation from the two communities; Bill Crandle; Roger Zito; Perry Garvin; Maggie Ward; Dan Hagan; Phil Neaton, Vice Chairman; and Bob Dunn, Chairman of the Town Woods Building Committee. The result of everyone's efforts was best summarized by Howard Fish, the former president of the Lyme-Old Lyme

Lacrosse program, who said, "It's unbelievable. We've gone from the worst facility within fifty miles ... to the best!"

Further improvements to the park are continuing – most notably the construction of a beautifully designed building, which will contain a central breezeway, rest rooms, storage, an office, and a concession area. Nina Peck is the architect, Steve Hallahan is the builder, and John Flower will serve as the Clerk of the Works. Each of these individuals is volunteering his or her own time on the building project. Todd Machnik was hired to do the site work for the building and then donated \$5,000 of his work to this effort. The building will be completed late this fall and will open for the spring lacrosse season.

Discussions are taking place with Anthony Baselio of Illiano's to run this concession, with some of the profits to be shared with the towns. Scoreboards for the two large fields are going to be donated by Coca Cola, thanks to Ken Kitchings. The Volunteer Playground should open next spring with the continued success of ongoing fundraising efforts by the group headed by Teri Lewis and Katie Balocca.

This project has been a tremendous example of how members of the two communities of Lyme and Old Lyme have worked together to produce a top-notch facility. The success of this project was due to the efforts of dedicated volunteers, professionals, and the community leaders of Lyme and Old Lyme, with special thanks to First Selectmen Bill Koch and Tim Griswold.



*Old Lyme Parks and Recreation chairman Don Bugbee speaks at the Town Woods Park dedication with Old Lyme First Selectman Tim Griswold, State Representative Marilyn Giuliano, and Lyme First Selectman Bill Koch (left to right) (Photo courtesy of Okwen Logan, LymeLine)*



*New entrance to Mile Creek School*

## Regularly Scheduled Meetings

---

|  |  |
|--|--|
| Ambulance, South End Volunteer .....   | 2 <sup>nd</sup> Thursday, Cross Lane Fire House, 7:00 p.m.                                     |
| American Legion Post #41 .....   | 4 <sup>th</sup> Tuesday (not July and August), Town Hall, 7:30 p.m.                            |
| Band, Old Lyme Town .....  | Monday, High School Stage, 7:00 p.m.   |
| Boy Scouts .....   | Monday, Mile Creek School, 7:00 p.m.   |
| Commission on Aging.....   | 3 <sup>rd</sup> Tuesday, Senior Center, 1:30 p.m.  |
| Connecticut River Gateway Commission .....   | 4 <sup>th</sup> Thursday, CRERPA Office<br>Old Saybrook Junction, 7:30 p.m.                    |
| Connecticut River Estuary Regional Planning Commission .....   | 1 <sup>st</sup> Monday, CRERPA Office<br>Old Saybrook Junction, 7:30 p.m.                      |
| Conservation Commission .....  | 1 <sup>st</sup> Wednesday, Town Hall, 7:00 p.m.  |
| Democratic Town Committee .....  | 1 <sup>st</sup> Wednesday, Town Hall, 7:30 p.m.  |
| Duck River Garden Club .....   | 2 <sup>nd</sup> Monday, St. Ann's Church, 7:30 p.m.  |
| Economic Development Commission .....  | 1 <sup>st</sup> Wednesday, Town Hall, 8:00 a.m.  |
| Education, Board of.....   | 1 <sup>st</sup> and 3 <sup>rd</sup> Wednesdays, various locations , 7:30 p.m.                  |
| Estuary Transit District.....  | 3 <sup>rd</sup> Monday, Saybrook Junction, 8:00 a.m.   |
| Finance, Board of .....  | 3 <sup>rd</sup> Tuesday, Town Hall, 7:30 p.m.  |
| Fire Department, Old Lyme .....  | Wednesday, Fire Station, Lyme Street, 7:30 p.m.  |
| Harbor Management Commission.....  | 2 <sup>nd</sup> Tuesday, Town Hall, 7:30 p.m.  |
| Historic District Commission.....  | 1 <sup>st</sup> Monday, Town Hall, 9:15 a.m.   |
| Inland Wetlands Commission.....  | 4 <sup>th</sup> Tuesday, Town Hall, 7:30 p.m.  |
| Junior Women's Club, Lyme-Old Lyme.....  | 3 <sup>rd</sup> Monday, Lymes' Youth Service Bureau, 7:30 p.m.                                 |
| Lyme-Old Lyme Lions Club .....   | 2 <sup>nd</sup> Wednesday (not July & Aug.)<br>Cherrystones Restaurant, 6:30 p.m.              |
| Lyme-Old Lyme Chamber of Commerce .....  | 3 <sup>rd</sup> Thursday (not July & Aug.)<br>Cherrystones Restaurant, 6:15 p.m.               |
| Lyme-Old Lyme Council of Churches.....   | 1 <sup>st</sup> Tuesday, St. Ann's, 10:00 a.m.   |
| Lymes' Senior Center Board of Directors .....  | 3 <sup>rd</sup> Monday, Senior Center, 4:00 p.m.   |
| Old Lyme Harbor Management Commission .....  | 3 <sup>rd</sup> Tuesday, Town Hall, 7:30 p.m.  |
| Open Space Committee .....   | 2 <sup>nd</sup> Friday, Town Hall, 8:30 a.m.   |
| Parks and Recreation Commission .....  | 1 <sup>st</sup> Thursday, Town Hall, 7:30 p.m.   |
| Planning Commission.....   | 2 <sup>nd</sup> Thursday (not Aug.), Town Hall, 7:30 p.m.                                      |
| Republican Town Committee. 1 <sup>st</sup> Wednesday, Lymes' Sr. Center, 26 Town Woods Road, 7:30 p.m. |  |
| Rogers Lake Authority .....  | as called; and subject to special meetings<br>Town Hall (Lyme/Old Lyme alternating), 7:30 p.m. |
| Selectmen, Board of .....  | 1 <sup>st</sup> and 3 <sup>rd</sup> Monday, Town Hall, 7:30 p.m.                               |
| Shellfish Commission.....  | as called  |
| Tree Commission .....  | 3 <sup>rd</sup> Thursday, Town Hall, 4:00 p.m.   |
| VFW Post 1467 Lyme-Old Lyme .....  | 4 <sup>th</sup> Monday (not July), Senior Center, 5:30 p.m.                                    |
| Visiting Nurses Association .....  | 2 <sup>nd</sup> Monday, Town Hall, 1:00 p.m.   |
| WPCA (Water Pollution Control Authority) ...   | 3 <sup>rd</sup> Thursday (not Aug. or Dec.), Town Hall, 7:30 p.m.                              |
| Zoning Board of Appeals .....  | 2 <sup>nd</sup> Tuesday (not Aug. or Dec.), Town Hall, 7:30 p.m.                               |
| Zoning Commission .....  | 2 <sup>nd</sup> Monday, Town Hall, 7:30 p.m.   |

# Selectman's Report

---

Timothy C. Griswold  
*First Selectman*

The theme for this year's Annual Report, "Look at Us Now," focuses on the newly renovated school buildings and the sports fields at the Town Woods Park. The school buildings are discussed in the District 18 report. The opening of the three soccer/lacrosse fields (Phase I of the project) on September 19 was the culmination of years of hard work by many people.

The discussion of a sports facility began in the mid 1990s and nearly became a dead issue when a \$2.6 million, Old Lyme-only proposal was defeated at referendum in 2000. Undeterred, some determined citizens pushed ahead with a plan that reduced the scope of the project and made it a joint venture (75 percent/25 percent) with the Town of Lyme. A groundbreaking occurred in June of 2003 and Machnik Brothers essentially completed the fields in November of 2003. With the help of the irrigation system, the grass grew well during 2004 and the job was completed for \$131,000 less than the \$1.4 million budget. The two towns were awarded state grants totaling \$950,000. Because Phase I did not include a recreation building containing washrooms, a concession area, and storage, in May of 2004 the voters of the two towns approved an expenditure of \$315,000 to fund this construction. Phase II of the project will consist of two baseball/softball fields and will be considered at a later date. The keys to success were the cooperation between the two towns and the dedicated volunteers who made it happen.

At the Annual Town Meeting in January, the Board of Selectmen announced that Connie Kastelowitz was selected Citizen of the Year for 2003. First elected to the Planning Commission in 1992, Connie is in her fourteenth year of service. She co-authored the town's *2000 Plan of Conservation and Development* and chaired the committee charged with developing the town's first Open Space Plan. She continues to serve on the Open Space Committee, which has had outstanding success in preserving Old Lyme's character. Connie has volunteered for the American Red Cross Blood program for more than 50 years and has donated over 100

pints herself. She is active with the American Cancer Society and High Hopes Therapeutic Riding. Her lengthy service to Yale-New Haven Hospital includes the creation of the Adolph & Constance Kastelowitz Fund and the Connie Kastelowitz Scholarship Fund. Connie has been a guiding hand in the development of our community and

A Special Town Meeting in November 2003 approved the town's purchase of seventy acres of property owned by Steven Ames located off Whippoorwill Road for the sum of \$700,000. The town's Land Acquisition account provided \$150,000 of this, and \$550,000 came from the town's undesignated surplus account. In addition, another thirty-six acres of Ames property was transferred to an irrevocable trust, the sole beneficiary of which will be the Town of Old Lyme upon the death of Mr. Ames. These thirty-six acres are subject to a conservation easement, and Mr. Ames will have exclusive use of the property during his lifetime. The Old Lyme Conservation Trust contributed \$25,000 toward the purchase and those funds were deposited into the Land Acquisition Account. This is an important addition to the open space green belt in the central part of town

After several years of working with the state, the MacCurdy Salisbury Foundation sold its parcel of over 180 acres in Lyme and Old Lyme near Rogers Lake to the state for \$620,000, subject to a conservation easement. The towns of Lyme and Old Lyme each contributed \$25,000, so the foundation received \$670,000, the earnings from which will fund scholarships for District 18 graduates.

Voters approved the purchase of the Roche property at 47 Lyme Street in February 2003 in an effort to give the school time to decide whether it could use the property or not. The town's Roche Property Committee concluded the property was not well suited for the town and recommended the sale of the property. In December of 2003, the Board of Education established a committee to work on this, with a deadline of March 31. After four months' study, the committee recommended and the BOE voted 5-4 to purchase the property, even though



## Selectman's Report *(continued)*

---

there was no identified purpose for the property. The voters of Old Lyme were asked to decide the disposition of the property at a Special Town Meeting on June 28. The first question was whether to sell the property to District 18 at a price of \$381,000. The voters opposed this option and voted to sell the property to the open market at a minimum price of \$400,000. It has subsequently been sold at that price to a family that intends to remodel and live in the house.

The reconstruction of Lyme Street will begin in November and, depending on the weather, may be completed before year's end. The cost estimate of the entire project is \$940,000 and consists of engineering costs, drainage improvements, installing new granite curbing, upgrading sidewalks and driveway aprons, and replacing the pavement from the firehouse to the parsonage. The expenditure was approved at a Special Town Meeting on April 19. We are eligible for a State/Federal grant of \$438,000 and we have accumulated the rest from prior budget years.

Selectman Tom Bice submitted his resignation to the Board of Selectmen at the end of July 2003. Skip Sibley and I appointed Robert Sevieri to serve the remainder of his term. As a result of the municipal election held on November 4, Skip Sibley and I were re-elected to the Board of Selectmen and were joined by Bonnie Reemsnyder.

Selectman Skip Sibley is the Board of Selectmen's liaison to the Sound View Development District Committee. This committee has been working with the Zoning Commission to create special zoning regulations for the Hartford Avenue area encouraging property owners and investors to upgrade properties. There has already been a significant number of property transfers and renovations, but we believe the new Design District will stimulate future improvements. The Sound View Parking Committee has implemented new changes, such as restriping Hartford Ave., adding new signage, and arranging for a towing service to tow delinquent parked cars. As a result, the vehicle problems have decreased.

Selectman Reemsnyder is the Board of Selectmen's liaison to the Information Technology Committee, which is charged with establishing a new town web site, evaluating

and implementing a Geographic Information System (GIS) for the town hall, and upgrading the town's financial software system. The web site will be operational in November 2004 and we hope to see implementation of GIS and new financial software in fiscal year 2005.

The town landfill has only about two years of capacity left before it must be closed. We have hired an engineering firm to help with the closure plan. It will be necessary to construct a transfer station and a scale in addition to other improvements. When the landfill is closed, probably in the fall of 2005, residents will deposit their bulky waste items into roll-off containers and will be charged by the pound. There will still be no charge to dispose of most recycled items.

The Regional Household Hazardous Waste Collection Center in Essex opened in May 2004 and it will provide us with twelve collections between May 22 and October 30. We scheduled a satellite collection for Lyme and Old Lyme on September 11.

The town budget passed at the Annual Budget Meeting in May. The growth in the grand list was 0.5 percent and the mill rate increased 1.9 mills or 8 percent from 23.6 to 25.5. Property and motor vehicle taxes account for 89 percent of our revenues, while state aid accounts for 3.7 percent. On the expense side, the school district is 75 percent of the budget and the town is 25 percent. A major part of the school increase is the debt service associated with the \$34 million building program. The assessor's office will be calculating new revaluation figures next year in compliance with the state's four-year revaluation cycle. The town underwent a physical revaluation (when revaluation personnel physically inspected all of our houses) in 2000 and we will have two statistical revaluations (no physical inspections) in 2004 and 2008. Revaluation notices will be sent in November of 2004.

The Old Lyme Fire Department took delivery of its new pumper in March; we thank the apparatus committee for a job well done. The department was awarded a \$104,422 Federal grant for communication equipment. Thanks to Jon Mittleman for completing the application and to Congressman Simmons in helping secure approval. We have funded the

## Selectman's Report *(continued)*

---

new Emergency Services Incentive Plan, which rewards active ambulance and fire volunteers for their service. This plan replaced the old MONY plan and was funded with the proceeds from our lawsuit settlement and with annual budget appropriations. We are confident the new plan and the tax abatement will keep our volunteer spirit alive and well.

We met with our engineering consultant and a representative from the DEP to discuss what must be done to repair the dam near Town Woods Road. While the dam is safe, we believe the slide gate assembly needs to be replaced. We were told there should be state funding (about 35 percent of cost), so we now need to determine the scope and cost of the repairs. At the Town Forum held in August, Alan Kyle, former Chairman of the Rogers Lake Authority, commented on the Rogers Lake Weed Study. He said the quality of the water in the lake is very good. Options to deal with the weeds were reviewed and, while a chemical solution appears to be the best, no decision has been made.

In anticipation of installing a sidewalk on the north side of Halls Road from the Art Association to the former Bess Eaton Donut Shop, we have moved the guard rails and will add a paved sidewalk in the fall. The consulting firm of Clough, Harbour & Assoc. has completed a feasibility study of adding a third lane to I-95. A copy is available in Town Hall, which shows the proposed changes to the interchanges in Old Lyme. It is estimated the project will be completed in twelve years.

A Church Corner Committee has been formed to consider options on improving the

streets, parking, and sidewalks in the vicinity of the Congregational Church. The Committee has two members from the Historic District Commission and each of the two churches. The committee's draft plan will be presented to the Historic District Commission and then to the public. We will have the plans finalized and the cost estimated by next summer, then apply for grants and schedule the work as part of our five-year capital plan.

A Town Hall Facilities Committee has been formed to consider options for dealing with space constraints in the town hall. We have engaged Laura Champion of Gible, Norden, Champion and Brown of Old Saybrook to help us through the process. We believe we have three options: renovate the lower level of the town hall and bring the building into fire- and ADA-code compliance, construct a new code-compliant addition to the town hall and upgrade the building as needed, or sell the town hall and build a new facility on a larger parcel elsewhere in Old Lyme. These are long-range options but we must examine the pros and cons of each in the near term.

The lower Connecticut River pumpout boat was very successful during the 2003 boating season. About 1,000 boats were pumped out at no charge to the owners, representing about 22,000 gallons of waste. Due to in-kind contributions, the five participating towns incurred no expense to operate the boat. Activity for the 2004 season is off to a good start. We are hopeful that we may obtain grants to fund 100 percent of the purchase of a new pumpout boat to be operated next season.

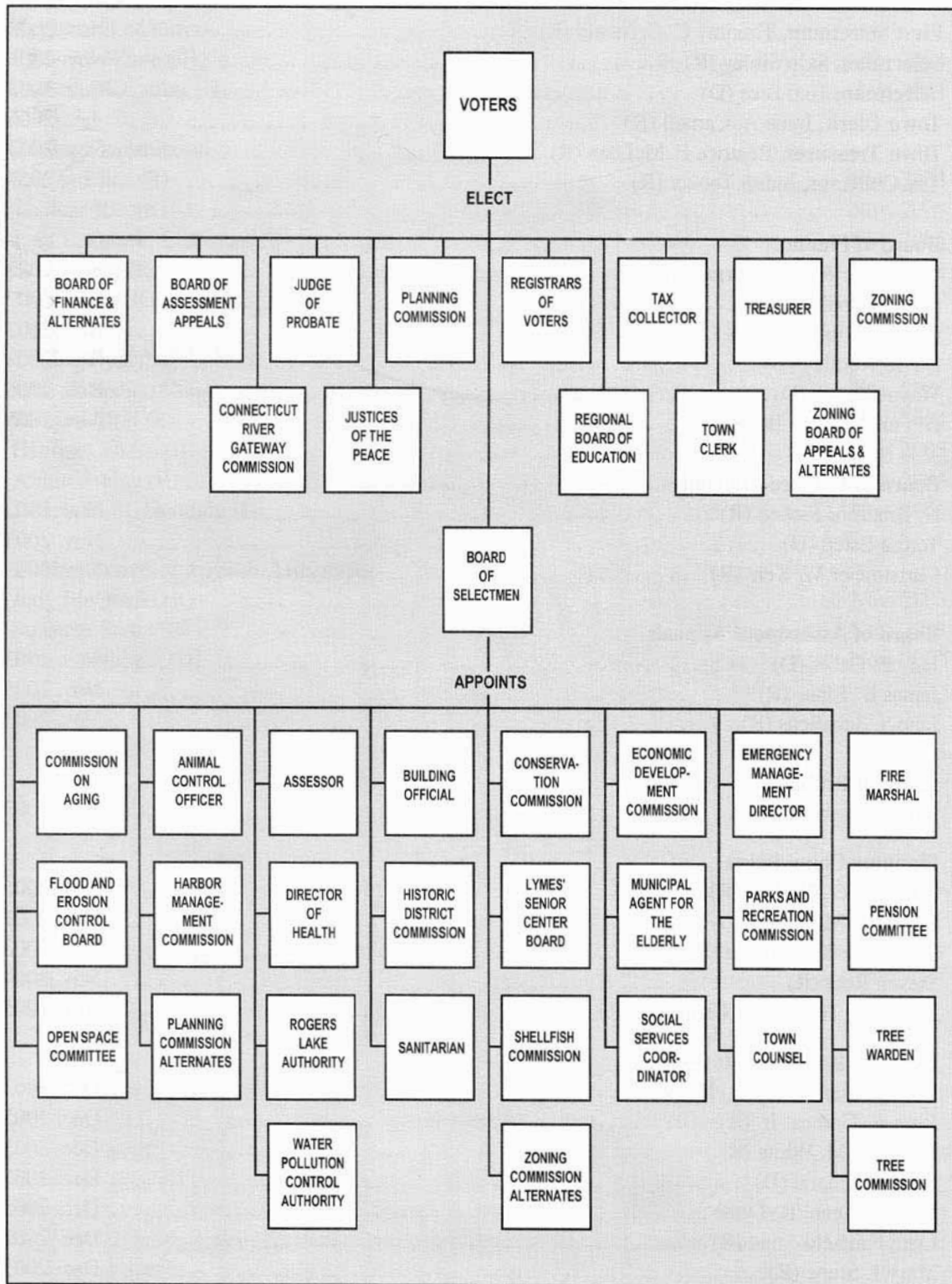


*Old Saybrook Rotary President Peter Knox presents Tim Griswold with \$1,000 for goals at Town Woods Park. (Photo courtesy of Olwen Logan, LymeLine)*



*The new seminar room in the high school has great acoustics for the chorus as well as for anyone holding a meeting here.*

# Organizational Chart



# Elected Officials

---

## Term Expires

|   |                    |
|---|--------------------|
| <b>First Selectman, Timothy C. Griswold (R)</b> .....                       | Nov. 2005          |
| <b>Selectman, Skip Sibley (R)</b> .....                                     | Nov. 2005          |
| <b>Selectwoman, Bonnie A. Reemsnyder (D)</b> .....                          | Nov. 2005          |
| <b>Selectman, Tom Bice (D)</b> .....  | resigned July 2003 |
| <b>Selectman, Robert A. Sevieri (D)</b> ...appointed to complete term ..... | Nov. 2003          |
| <b>Town Clerk, Irene A. Carnell (R)</b> .....                               | Jan. 2006          |
| <b>Town Treasurer, Beatrice F. McLean (R)</b> .....                         | Nov. 2007          |
| <b>Tax Collector, Judith Tooker (R)</b> .....                               | Nov. 2007          |

### Board of Finance

|                                      |                    |
|--------------------------------------|--------------------|
| Gail Fetter Roth, Chairman (R) ..... | Nov. 2003          |
| Mark Diebolt, Chairman (R) .....     | Nov. 2007          |
| Claire S. Helmboldt (R) .....        | resigned Nov. 2003 |
| David Woolley (D) .....              | Nov. 2009          |
| Wayne Devoe (D) .....                | Nov. 2005          |
| H. Perry Garvin III (R) .....        | Nov. 2005          |
| Christopher W. Kerr (R) .....        | Nov. 2005          |

### Board of Finance Alternates

|                              |           |
|------------------------------|-----------|
| Judith Read (R) .....        | Nov. 2005 |
| Raymond Gorman, Jr. (D)..... | Nov. 2005 |
| Janet G. Sturges (R).....    | Nov. 2005 |
| Teresa Estep (D).....        | Nov. 2003 |

### Board of Assessment Appeals

|                             |           |
|-----------------------------|-----------|
| Jane E. Cable (D) .....     | Nov. 2007 |
| James B. Blair (R) .....    | Nov. 2005 |
| Jane S. Schellens (R) ..... | Nov. 2007 |

### Judge of Probate

|                           |           |
|---------------------------|-----------|
| Sylvia Peterson (D) ..... | Jan. 2007 |
|---------------------------|-----------|



*Center School looks the same, but inside . . .  
“renovated as new”!*

## Elected Officials *(continued)*

---

|  | <b>Term Expires</b> |
|--|---------------------|
| <b>Planning Commission</b>                       |                     |
| Christopher W. Kerr (R) .....                    | Nov. 2006           |
| Robert P. McCarthy (D) .....                     | Nov. 2007           |
| Constance Kastelowitz (R).....                   | Nov. 2008           |
| Steven Ross (R) .....                            | Nov. 2009           |
| Harold L. Thompson, Chairman (R) .....           | Nov. 2005           |
| <b>Regional Board of Education</b>               |                     |
| Priscilla Hammond (R) Lyme .....                 | Dec. 2007           |
| Russ A. Gomes, Jr. (R) .....                     | Dec. 2005           |
| Roderick M. White (R).....                       | Dec. 2005           |
| Susan Fogliano (D).....                          | Dec. 2007           |
| Daniel Hagan (R) Lyme.....                       | Dec. 2005           |
| Lynn Fairfield-Sonn (R).....                     | Dec. 2007           |
| Mary J. Stone (R) .....                          | Dec. 2007           |
| Karen Conniff (R) .....                          | Dec. 2005           |
| Nanette Salvino (R).....                         | Dec. 2005           |
| <b>Registrars of Voters</b>                      |                     |
| Roderick White (R) .....                         | Jan. 2005           |
| Patricia McCarthy (D) .....                      | Jan. 2005           |
| <b>Zoning Commission</b>                         |                     |
| Eric V. Fries (R).....                           | Nov. 2008           |
| Thomas Risom (R) .....                           | Nov. 2009           |
| Joan L. Bozek, Chairman (D).....                 | Nov. 2005           |
| Jane Marsh (R).....                              | Nov. 2006           |
| Theodore P. Kiritsis, elected Chairman (R) ..... | Nov. 2007           |
| <b>Zoning Board of Appeals</b>                   |                     |
| June B. Speirs, Chairman (R) .....               | Nov. 2007           |
| Richard Moll (R) .....                           | Nov. 2009           |
| Susanne Stutts (R).....                          | Nov. 2008           |
| Kip Kotzan (D).....                              | Nov. 2006           |
| Thomas E. Schellens (R) .....                    | Nov. 2005           |
| <b>Zoning Board of Appeals Alternates</b>        |                     |
| Judy McQuade (R).....                            | Nov. 2005           |
| Wendy Brainerd (R) .....                         | Nov. 2005           |
| Edgar Butcher (D).....                           | Nov. 2005           |

# Appointed Officials

---

|   | Term Expires       |
|---|--------------------|
| <b>Adelphia Cable Advisory Board</b>                              |                    |
| Thomas E. Clements (R) .....                                      | June 2005          |
| <b>Commission on Aging</b>  |                    |
| Donald Tapper, Chairman and Municipal Agent for the Elderly ..... | (standing)         |
| Bea Minson (R) .....  | Jan. 2007          |
| Rita Leonard (U) .....  | Jan. 2006          |
| Jane Bysko (R) .....  | Jan. 2007          |
| Adele Tolchinski (R) .....  | Jan. 2005          |
| Kelli Boothman (R) .....  | Jan. 2005          |
| Linda Camarra (OLVNA) .....                                       | (standing)         |
| Patricia McCarthy (D) .....                                       | Jan. 2006          |
| Dorie Manley (R) .....  | Jan. 2006          |
| Kay Mannetho .....  | Ex-Officio         |
| <b>Connecticut River Estuary Regional Planning Agency</b>         |                    |
| Jane R. Marsh, Delegate (R) .....                                 | Jan. 2006          |
| Alan Bayreuther, Alternate (R) .....                              | Jan. 2005          |
| <b>Connecticut River Gateway Commission</b>                       |                    |
| Rudolph F. Besier, Delegate (R) .....                             | July 2006          |
| Frederic T. Crosby, Delegate (R) .....                            | July 2006          |
| <b>Conservation Commission (established January 2004)</b>         |                    |
| Ellie Czarnowski, Chairman (U) .....                              | Jan. 2007          |
| Janet Bechtel (U) .....   | Jan. 2007          |
| Mariette Brown (D) .....  | Jan. 2006          |
| Robert Linde (U) .....  | Jan. 2006          |
| Richard Conniff (D) .....   | Jan. 2005          |
| Michael Silberberg (U) .....                                      | Jan. 2005          |
| David McCulloch, Alternate (D) .....                              | Jan. 2005          |
| George James, Alternate (R) .....                                 | Jan. 2005          |
| Tom Scherer, Alternate (D) .....                                  | Jan. 2005          |
| Ted Crosby (R) .....  | Ex-Officio         |
| <b>Economic Development Commission</b>                            |                    |
| Larrye DeBear, Chairman (U) .....                                 | resigned Dec. 2003 |
| Catherine Petrillo (R) .....                                      | Jan. 2009          |
| Michael Miller (R) .....  | Jan. 2006          |
| Michael Lech (R) .....  | Jan. 2007          |
| William O'Meara (R) .....   | Jan. 2007          |
| Joseph Cemean (R) .....   | Jan. 2008          |
| Susan Howard Cihocki (R) .....                                    | Jan. 2009          |
| John Stratton (D) .....   | Jan. 2005          |
| Robert Jose, Chairman (U) .....                                   | Jan. 2006          |
| <b>Emergency Management Director</b>                              |                    |
| David Roberge .....   | Jan. 2005          |

## Appointed Officials *(continued)*

|  | Term Expires       |
|--|--------------------|
| <b>Flood and Erosion Control Board</b>                               |                    |
| H. Perry Garvin III, Chairman (R) .....                              | Jan. 2006          |
| Gary Smith (R) .....   | Jan. 2006          |
| Kenneth Emerson (R) .....  | Jan. 2004          |
| Todd Machnik (R) .....   | Jan. 2006          |
| Steven Ross (R) .....  | Jan. 2006          |
| <b>Harbor Management Commission</b>                                  |                    |
| John Speirs III, Chairman (R) .....                                  | resigned Aug. 2003 |
| Mark Yuknat (R) .....  | Jan. 2006          |
| Anthony M. Licitra, Treasurer (D) .....                              | Jan. 2006          |
| Lori Sulmasy (R) .....   | Jan. 2008          |
| G. Bradford Ficken, Harbormaster (R) .....                           | Ex-Officio         |
| Charles Delinks (R) .....  | Jan. 2005          |
| Robert Doyen (D) .....   | Jan. 2005          |
| Harry Kerop (U) .....  | Jan. 2006          |
| Norman Hewitt, Chairman (D) .....                                    | Jan. 2008          |
| Michael Moran (R) .....  | Jan. 2005          |
| Michael Mackey (U) .....   | Jan. 2008          |
| <b>Harbor Management Commission Alternates</b>                       |                    |
| David Zita (D) .....   | Jan. 2005          |
| Michael Magee (U) .....  | Jan. 2008          |
| Steven Ross (R) .....  | Jan. 2006          |
| <b>Historic District Commission</b>                                  |                    |
| Jephson O'Connell, Co-Chairman (R) .....                             | Jan. 2004          |
| Stanley S. Schuler, Co-Chairman (R) .....                            | deceased Oct. 2003 |
| Barbara S. Traskos (R) .....   | Jan. 2008          |
| Paul Sa'gristano (R) .....   | Jan. 2006          |
| Nina Peck (R) .....  | Jan. 2009          |
| Joanne DiCamillo, Alternate (U) .....                                | Jan. 2007          |
| Kenneth Levin, Co-Chairman (U) .....                                 | Jan. 2005          |
| James Bechtel, Co-Chairman (U) .....                                 | Jan. 2007          |
| Elizabeth Chamberlain, Alternate (R) .....                           | Jan. 2005          |
| Thomas Keogh, Alternate (R) .....                                    | Jan. 2007          |
| <b>Inland Wetlands Commission (formerly Conservation Commission)</b> |                    |
| Thomas De'gnan, Chairman (U) .....                                   | Jan. 2006          |
| David McCulloch (D) .....  | Jan. 2005          |
| Evan Griswold (R) .....  | Jan. 2007          |
| Janet Bechtel (U) .....  | Jan. 2005          |
| Lewis DiCamillo (R) .....  | Jan. 2006          |
| Carl Kotzan (U) .....  | Jan. 2007          |
| Martin Griswold (U) .....  | Jan. 2005          |
| Agnes O'Connor, Alternate (D) .....                                  | Jan. 2005          |
| Ellie Czarnowski, Alternate (U) .....                                | June 2004          |

# Appointed Officials *(continued)*

---

Term Expires

## Lymes' Senior Center—Board of Directors

|   |                    |
|---|--------------------|
| Jessie Smith (R) .....                                      | July 2005          |
| Rita Rohrberg (D) .....                                     | July 2006          |
| Karen Wintringham (D) .....                                 | resigned Mar. 2004 |
| Linda A. Winzer (Lyme) .....                                | July 2005          |
| James Nichols (R) .....                                     | July 2005          |
| Ruth Young (Lyme) .....                                     | July 2005          |
| Phyllis Shepard-Tambini (R) .....                           | July 2007          |
| William Paradis (Lyme) .....                                | July 2005          |
| Donald Tapper, <i>Municipal Agent for the Elderly</i> ..... | July 2006          |
| Evald Johnson, Chairman (D) .....                           | July 2007          |
| Diane Simpson (R) .....                                     | July 2007          |
| Deborah O'Meara (R) .....                                   | deceased Nov. 2003 |
| Francis Balboni (R) .....                                   | July 2005          |
| Robert Getman (R) .....                                     | July 2006          |

## Open Space Committee

|                                  |           |
|----------------------------------|-----------|
| Diana Atwood-Johnson (R) .....   | Jan. 2005 |
| Evan Griswold (R) .....          | Jan. 2005 |
| Jennifer Hillhouse (R) .....     | Jan. 2005 |
| George James, Chairman (R) ..... | Jan. 2005 |
| Constance Kastelowitz (R) .....  | Jan. 2005 |
| Theodore Kiritsis (R) .....      | Jan. 2005 |
| David McCulloch (D) .....        | Jan. 2005 |
| Frederick Crosby (R) .....       | Jan. 2005 |
| Dmitri Tolchinski (R) .....      | Jan. 2005 |
| Eleanor Czarnowski (U) .....     | Aug. 2004 |

## Parks and Recreation Commission

|                                      |           |
|--------------------------------------|-----------|
| Mary Glynn McArw, Chairman (R) ..... | Jan. 2005 |
| William Crandall (R) .....           | Jan. 2007 |
| Mary Ellen Garbarino (R) .....       | Jan. 2006 |
| Roger Zito (R) .....                 | Jan. 2005 |
| Robert Dunn (R) .....                | Jan. 2005 |
| Richard Ward (D) .....               | Jan. 2006 |
| Missy Colburn (U) .....              | Jan. 2007 |

## Pension Committee

|   |           |
|---|-----------|
| John Rafal (R) .....                      | Jan. 2004 |
| Oliver Patrell, Acting Chairman (D) ..... | Jan. 2006 |
| S. E. Canaday (R) .....                   | Jan. 2006 |
| John Bysko (R) .....                      | Jan. 2005 |
| Wayne Devoe, <i>Board of Finance</i>      |           |
| Kathleen Hall, <i>Employee Rep.</i>       |           |



## Appointed Officials *(continued)*

Term Expires

### Planning Commission Alternates

|                           |           |
|---------------------------|-----------|
| Nancy Strohla (R).....    | Jan. 2005 |
| Robert Pierson (R).....   | Jan. 2005 |
| Alan Bayreuther (U) ..... | Jan. 2005 |

### Rogers Lake Authority

|                                       |                    |
|---------------------------------------|--------------------|
| Alan Kyle (Lyme), Chairman .....      | deceased Feb. 2004 |
| Frederik Holth (Lyme), Chairman ..... | June 2005          |
| Robert Roach (Lyme).....              | June 2005          |
| Walter Buch (Lyme).....               | June 2005          |
| Roger Breunig (R).....                | Jan. 2005          |
| Brian Kyle (R) .....                  | Jan. 2006          |
| Richard Smith (R) .....               | Jan. 2007          |

### Shellfish Commission

|                             |           |
|-----------------------------|-----------|
| Mervin F. Roberts (R) ..... | Jan. 2006 |
| John D. Seckla (U) .....    | Jan. 2006 |
| David Redfield (R).....     | Jan. 2005 |

### Town Counsel

|                            |           |
|----------------------------|-----------|
| Marylin C. Clarke (D)..... | Jan. 2004 |
|----------------------------|-----------|

### Tree Commission

|                                      |            |
|--------------------------------------|------------|
| Joanne DiCamillo, Chairman (U) ..... | Jan. 2005  |
| Patience Moll (R) .....              | Jan. 2005  |
| David Rhum (D) .....                 | July 2004  |
| Joan Flynn, M.D. (U) .....           | Jan. 2007  |
| Jason Wilcox.....                    | Jan. 2006  |
| Tom Deġnan, Tree Warden .....        | Ex-Officio |

### Tree Warden

|                      |           |
|----------------------|-----------|
| Tom Deġnan (U) ..... | Jan. 2005 |
|----------------------|-----------|

### Water Pollution Control Authority

|                                 |           |
|---------------------------------|-----------|
| Thomas Risom, Chairman (R)..... | Jan. 2007 |
| Joseph O'Connor (D).....        | Jan. 2006 |
| Luisa Groġan (D) .....          | Jan. 2005 |
| Mervin Roberts (R).....         | Jan. 2005 |
| George James (R).....           | Jan. 2006 |
| Robert Gassman (U).....         | Jan. 2007 |
| Clayton Penniman (R) .....      | Jan. 2007 |
| Dmitri Tolchinski (R) .....     | Jan. 2006 |
| Roger Breunig (R) .....         | Jan. 2005 |

### Water Pollution Control Authority Alternates

|                         |           |
|-------------------------|-----------|
| Michael Dickey (R)..... | Jan. 2008 |
| Stephen Dix (R) .....   | Jan. 2005 |

# Appointed Officials *(continued)*

|                                     | Term Expires |
|-------------------------------------|--------------|
| <b>Zoning Commission Alternates</b> |              |
| John Johnson (R) .....              | Jan. 2005    |
| Howard Tooker (R) .....             | Jan. 2005    |
| Steven Ames (D) .....               | Jan. 2005    |

**Resident State Troopers:** TFC David Todd; TPR Jud Howes  
**Town Police:** Wayne Collins, David Lillis, Sal Milardo, Howard Smith, Timothy Wojcik, Edward Vasko, William Zipadelli; Elaine Williams, Clerk

## PUBLIC WORKS DEPARTMENT

Public Works Superintendent - John Roach

|                  |                 |                 |
|------------------|-----------------|-----------------|
| Edward Adanti    | Vincent Doughty | Donald Rutty    |
| Richard Campbell | Lawrence Galbo  | Donald Saunders |
| John Caulkins    | Richard Goeka   | Robert Swaney   |
| Paul Dorothy     | Brian Lorentson | Robert Wanat    |
|                  | Jeff Olaski     |                 |

## JUSTICES OF THE PEACE 1/1/01 - 1/3/05

*(Elected at caucus or through application)*

|                               |                             |                         |
|-------------------------------|-----------------------------|-------------------------|
| Patricia A. W. Bennett (U)    | Richard G. Kehoe (U)        | Mervin F. Roberts (R)   |
| Philip J. Bliss (R)           | George C. King, Jr. (D)     | Frank J. Roth, Jr. (R)  |
| Nancy L. Campbell (D)         | Mark C. Lander (D)          | Jennie Anne Rubera (R)  |
| Jane E. Cable (D)             | Jerilynn Murtz Marshall (R) | John D. Seckla (U)      |
| Irene A. Carnell (R)          | Patricia M. McCarthy (D)    | Walter O. Seifert (R)   |
| Thomas E. Clements (U)        | Barbara B. O'Connell (U)    | June B. Speirs (R)      |
| Barbara McBride Doyen (D)     | Agnes Q. O'Connor (D)       | Michellee Speirs (U)    |
| Patrick Joseph Fitzgerald (U) | Jacqueline M. Opeka (R)     | Joel S. Suisman (R)     |
| Karen Franklin (D)            | Oliver L. Patrell (D)       | Benjamin C. Thomson (U) |
| Verdina P. Ghirardi (D)       | Gloria J. Pendleton (D)     | Judith Tooker (R)       |
| Timothy C. Griswold (R)       | Lawrence I. Peterson (D)    | Eliisa L. Winkel (U)    |
| Lyman B. Hoops (R)            | Daria M. Phelps (D)         | Walter O. Zabel (U)     |
| Doris C. Johnson (R)          | Ruth Dillon Roach (D)       | Kurt J. Zemba (R)       |
| Evald Johnson (D)             | Emily Minor Roberts (U)     |                         |



*Remodeled Middle School cafeteria*

# Appointed Officials *(continued)*

## TOWN STAFF

Michele Hayes-Finn ..... Office Manager, Selectman’s Office  
 Catherine Frank ..... Administrative Assistant, Selectman’s Office  
 Ruth Roach, Ann Johnson ..... Tax Clerks  
 Kathleen Hall ..... Administrative Assistant, Building Department  
 Maribeth Fraser ..... Administrative Assessment Technician  
 Doris Johnson ..... Financial Administrator  
 Kim Groves ..... Land Use Administrator  
 Marilyn Swaney ..... Administrative Assistant, Health Department  
 Susan Bartlett ..... Adminstrative Assistant, Zoning Commission  
 and Zoning Board of Appeals

Animal Control Officer ..... Martha Rumskas  
 Assessor ..... Walter E. Kent, Jr.  
 Assistant Building Official/Assistant Sanitarian ..... John Flower  
 Assistant Town Clerk ..... Eileen Coffee, Jessie F. Smith  
 Building Official ..... Ronald E. Rose  
 Consulting Engineer ..... George Roberts  
 Deputy Fire Marshal ..... David Roberge  
 Director of Health ..... Vijay Sikand, M.D.  
 Director of Parks and Recreation ..... Donald Bugbee  
 Fire Marshal ..... Philip Bliss  
 Probate Court Clerk ..... Lynn Campbell  
 Sanitarian ..... Ronald E. Rose  
 Social Services Coordinator/Senior Center Director ..... Kay Mannetho  
 Zoning and Inland Wetlands Enforcement Officer ..... Ann Brown



*Mile Creek School’s bright, spacious art room (former library), with versatile tables and lots of storage. The tall cabinet on the right holds racks of supply trays that can be removed and placed on separate tables.*



*The Middle School kiln, in a small separate room off the art room, gets a lot of use.*

# Election Results – November 4, 2003

---

## Town Election

|  |                        |             |      |
|--|------------------------|-------------|------|
| First Selectman                          | Timothy C. Griswold    | Republican  | 1458 |
|  | Bonnie A. Reemsnyder   | Democrat    | 1167 |
| Selectman                                | Arthur E. Sibley       | Republican  | 1566 |
|  | David B. Woolley       | Democrat    | 1002 |
| Treasurer                                | Beatrice F. McClean    | Republican  | 1556 |
|  | Luisa B. Grogan        | Democrat    | 863  |
| Board of Finance (2)                     | Andrew L. Russell      | Republican  | 1630 |
|  | Gail Fetter Roth       | Republican  | 1538 |
|  | David B. Woolley       | Democrat    | 1236 |
| Board of Finance<br>Alternate (3)        | Janet G. Sturges       | Republican  | 1693 |
|  | Christopher W. Kerr    | Republican  | 1663 |
|  | Anthony Vincent Lynch  | Republican  | 1499 |
|  | Raymond Gormante       | Democrat    | 1123 |
| Board of Assessment                      | Jane S. Schellens      | Republican  | 1343 |
|  | Jane E. Cable          | Democrat    | 1005 |
| Planning<br>Commission 2003              | Constance Kastelowitz  | Republican  | 1253 |
|  | Patrick G. Looney      | Democrat    | 1045 |
| Planning<br>Commission 2004              | Steven Alan Ross       | Republican  | 1387 |
|  | Robert P. DePianta     | Democrat    | 921  |
| Zoning Commission<br>2003                | Eric Fries             | Republican  | 1431 |
|  | Eric Fries             | Democrat    | 832  |
| Zoning Commission<br>2004                | Thomas C. Risom        | Republican  | 1805 |
| Zoning Board of<br>Appeals 2003          | Susanne M. Stutts      | Republican  | 1247 |
|  | Patrick G. Looney      | Democrat    | 1003 |
| Zoning Board of<br>Appeals 2004          | Richard A. Moll        | Republican  | 1476 |
|  | Dimitri Tolchinsky     | Petitioning | 711  |
| Zoning Board of<br>Appeals Alternate (3) | Wendy M. Brainard      | Republican  | 1534 |
|  | Judy A. McQuade        | Republican  | 1708 |
|  | Edgar Butcher          | Democrat    | 1325 |
| Region 18<br>Board of Education          | Lynn G. Fairfield-Sonn | Republican  | 1366 |
|  | Lynn G. Fairfield-Sonn | Democrat    | 771  |
|  | Catherine M. Frank     | Republican  | 1150 |
|  | Susan P. Fogliano      | Democrat    | 1555 |
|  | Mary J. Stone          | Republican  | 1284 |
|  | Mary J. Stone          | Democrat    | 884  |

## Marriages July 1, 2003 – June 30, 2004

---

|  |                    |
|--|--------------------|
| Anderson Russell Alcroft - Emily Ormsby Graves                 | July 5, 2003       |
| Partrick John Connell - Kelly Theresa Scanlon                  | July 5, 2003       |
| Brian Keith Botelho - Erin Christine Pettinato                 | July 11, 2003      |
| Joseph Henry Johnson - Amy Baker Roach                         | July 12, 2003      |
| Daniel Dawson Power - Alison Marie Klimek                      | July 12, 2003      |
| Jeremy Scott Archer - Lesley Erin Richeimer                    | July 19, 2003      |
| Joshua LaFlamme Rothman - Amy McMillan Tambini                 | July 19, 2003      |
| David William Young - Alyssa Diane Barr                        | July 26, 2003      |
| Scott H. Peck - Robyn A. Emerson                               | July 26, 2003      |
| Philip Charles Fitzpatrick - Jennifer Elizabeth Smith          | July 26, 2003      |
| Joseph J. Salmeri, Jr. - Lisa M. Mercurio                      | July 26, 2003      |
| Thomas A. Ahern - Belinda D. Nemeth                            | July 27, 2003      |
| Craig C. Tooker - Heather C. Longchamps                        | August 2, 2003     |
| Brady William Stout - Erin Katherine Lowery                    | August 2, 2003     |
| Theodore Anthony Kulpik, Jr. - Mandy Ann Wacker (East Lyme)    | August 8, 2003     |
| Peter Charles Edmonson - Julie Elizabeth Borsari               | August 9, 2003     |
| William Louis Schmidt - Kathryn Miller Houle (East Lyme)       | August 9, 2003     |
| Arthur Eugene Hurst - Joanne Druchyk Reardon                   | August 10, 2003    |
| Charles Edwin Kitchings - Amanda Christine Holtman (Waterford) | August 15, 2003    |
| Jay Daniel Carson - Jessica Valerie Harvey (New London)        | August 21, 2003    |
| John Daniel Ilvento - Wanda Rodriguez (New London)             | August 23, 2003    |
| Paul F. Nickerson - Amy V. Latham                              | August 30, 2003    |
| Charles Robert Breckenridge - Marnie Manochi Hopkins (Clinton) | August 31, 2003    |
| Peter Christopher Felmly - Sarah Colton Eno                    | September 6, 2003  |
| John Robert Fries - Heather Eileen Erricson (Waterford)        | September 6, 2003  |
| Andrew Michael Jackson - Jennifer Ann Taglia                   | September 6, 2003  |
| Rodney James Girard - Rose-Ann D'Aprile Denesha                | September 19, 2003 |
| Cameron John Rogerson - Leah Kathryn Johnson                   | September 20, 2003 |
| Daric Jon Schlesselman - Sarah Ross Ludington                  | September 20, 2003 |
| Brandon Craig Barhorst - Jill Marie Popp                       | September 27, 2003 |
| Kyle Edward Lynch - Kelly Armstrong Madsen                     | September 27, 2003 |
| Michael Louis Warren - Christine Anne Rodriguez (Manchester)   | September 27, 2003 |
| Christopher Devlin Brown - Joni Gage                           | October 4, 2003    |
| Robert Charles Nelson - Anita Louise Fernald (Groton)          | October 4, 2003    |
| Oliver A. Albrecht - Lisa Mary Uresky                          | October 18, 2003   |
| Hiro Joseph Takata - Lisa Anne Vernacatola (Newington)         | October 31, 2003   |
| Bounlane Lasisomphone - Jillian Leigh Johnson (Groton)         | November 7, 2003   |
| Linwood Frank Bennett - Deborah Anne McKenna                   | November 8, 2003   |
| Timothy Patrick Cromarty - Laurie Irene Brink                  | November 13, 2003  |
| Todd Christopher May - Stacy Lynn Miano (Lebanon)              | November 15, 2003  |
| Thomas A. Davidson - Debora M. Whalen                          | November 22, 2003  |
| Frank Besselieu Hall - Barbara Childs Dwyer                    | November 28, 2003  |
| Timothy Kenneth Davison - Claire Fern Cassidy                  | November 29, 2003  |
| Michael J. Brown - Karen D. Connelly                           | January 1, 2004    |
| Todd Gerard Rosenthal - Kerry Meaghan Devine                   | January 17, 2004   |
| David Gordon Gay - Trang Kim Nguyen                            | January 20, 2004   |
| William Joseph Sheridan - Dorothy Marie Hayes (Norwich)        | February 20, 2004  |
| William B. Wenning, Jr. - Catherine M. Mahoney                 | February 23, 2004  |
| Robert Marshall Patterson - Kathleen Buckley Ellis             | April 3, 2004      |
| Samuel Barnitz Williams - Jennifer Lynn Cooley (Middletown)    | April 24, 2004     |
| Joseph A. Palazzo - Rita L. Franco                             | April 24, 2004     |

## Marriages July 1, 2003 – June 30, 2004 *(continued)*

---

|  |                |
|--|----------------|
| Donald P. McCorkle, Jr. - Susan B. Lavery                | April 30, 2004 |
| Thomas Patrick Maloney - Yuehua Wu                       | May 2, 2004    |
| Keith E. Hoyt - Erica R. Lord                            | May 15, 2004   |
| Paul Christopher Martin - Jennifer Laura Kennedy         | May 15, 2004   |
| Kevin James Burton - Janet Lee Taylor                    | May 22, 2004   |
| Bryan Matthew Sheffield - Laura Therese Bitto            | May 22, 2004   |
| Gregory John Wojcik - Kimberly Louise Bugbee             | May 22, 2004   |
| Jason M. Bronson - Michelle R. Miller (Woodstock)        | May 22, 2004   |
| Joseph Eloi Sevigny - Tamara Jean Harris (Lyme)          | May 22, 2004   |
| Douglas Barry Blackburn - Elizabeth Caroline Griswold    | May 23, 2004   |
| David Alexander Smith - Charlotte Elisabeth Mangin       | May 29, 2004   |
| H. David Frank - Rita G. Christopher                     | May 30, 2004   |
| Marc Pray Dishaw - Kristin Lynn Dubicki (Old Saybrook)   | June 4, 2004   |
| John Zevallos - Monika Anna Neubauer                     | June 8, 2004   |
| Douglas Axel Kiem - Leslie Ann Didier                    | June 12, 2004  |
| Joshua Andrew Edmed - Winifred Keeling Bing (Waterford)  | June 19, 2004  |
| Ryan Richard Spearrin - Jessica Jean Kovel (Essex)       | June 19, 2004  |
| Derek Paul Babineaux - Amanda Victoria Kathryn Wood      | June 26, 2004  |
| Jeffrey John Brining - Lisa Marie Graziano               | June 26, 2004  |
| James Louis Schomer - Brett Marie Barbeau                | June 26, 2004  |
| Tomasz Gostomski - Jessica Erin King                     | June 26, 2004  |
| Richard Parmly Lippincott - Amy Diane Varley (Westbrook) | June 26, 2004  |
| Gregg Thomas Landry - Lori-Rae Purinton (Branford)       | June 26, 2004  |



*Middle School student Colbey Kennedy helps lead a discussion in the Team X science class of Ms. Courtney Harris.*

*The newly reconfigured high-school guidance office*



## Deaths July 1, 2003 – June 30, 2004

---

|  |                    |
|--|--------------------|
| Sari Cope Butt (New London)                | July 7, 2003       |
| Shirley Ruth Nicholson (Branford)          | July 7, 2003       |
| Anthony T. Dolce                           | July 8, 2003       |
| Harold James Dugan (Branford)              | July 14, 2003      |
| John Russo (East Lyme)                     | July 17, 2003      |
| Leonard F. Hedwall (Old Saybrook)          | July 23, 2003      |
| James O. Joanou (West Haven)               | July 28, 2003      |
| Annie DiMassino                            | July 30, 2003      |
| Lenis Sheffield (East Lyme)                | August 8, 2003     |
| Orlando J. Manochi (Essex)                 | August 13, 2003    |
| Pasqualina Lodi (New Haven)                | August 14, 2003    |
| David Michael Avakian (New Haven)          | September 4, 2003  |
| Anne Haff Byron                            | September 5, 2003  |
| Sara G. Kleinhans (New London)             | September 11, 2003 |
| Stephen G. Gilbert (New London)            | September 28, 2003 |
| Cecil Daniels (Old Saybrook)               | October 4, 2003    |
| Stanley Carter Schuler                     | October 12, 2003   |
| Irene Eleanor Larsen (Old Saybrook)        | October 15, 2003   |
| Norma Ahnert (Old Saybrook)                | October 17, 2003   |
| Catherine M. Lacus (East Lyme)             | October 29, 2003   |
| Richard F. Heske (Branford)                | November 1, 2003   |
| Barbara R. French                          | November 13, 2003  |
| Judith St. Germain (Branford)              | November 15, 2003  |
| David Owen Jones                           | November 25, 2003  |
| Dominick Cappello (Waterford)              | November 26, 2003  |
| Josephine Licitra (Rocky Hill)             | December 7, 2003   |
| Deborah Blair Lambert O'Meara (New London) | December 11, 2003  |
| Emily Betz (West Hartford)                 | December 14, 2003  |
| Anna T. Hubball (New London)               | December 23, 2003  |
| Jesse Fravel                               | December 27, 2003  |
| Paul M. Vizcaino (Essex)                   | January 4, 2004    |
| Kathleen Florin                            | January 6, 2004    |
| Myron A. Evans (New London)                | January 10, 2004   |
| Manuel Henrique Alves                      | January 11, 2004   |
| Jean Pauline Spinetti                      | January 14, 2004   |
| Warren T. Kenny (Norwich)                  | January 25, 2004   |
| Margaret Carney (Middletown)               | January 30, 2004   |
| Harold W. Goss, Sr. (Norwich)              | February 4, 2004   |
| John M. Irwin                              | February 8, 2004   |
| Gina M. Smith                              | February 8, 2004   |
| Edward Joseph DeTour (Essex)               | February 11, 2004  |
| Josephine Langone                          | March 6, 2004      |
| Sharon A. Gary                             | March 7, 2004      |
| Sophie Jakubiel (New London)               | March 18, 2004     |
| Mary D. Dirks (Middletown)                 | March 30, 2004     |
| Joseph A. Barstis (Niantic)                | April 17, 2004     |
| Mary Clara Mathiason (New London)          | April 23, 2004     |
| Leone B. Smith (Old Saybrook)              | April 24, 2004     |
| William C. Carvill (Middletown)            | April 28, 2004     |
| Helen H. Janse (New London)                | April 28, 2004     |
| Charlotte A. Scoville (New London)         | April 28, 2004     |

## Deaths July 1, 2003 – June 30, 2004 *(continued)*

---

|                                      |               |
|--------------------------------------|---------------|
| John Harris Weaver (New London)      | May 2, 2004   |
| Donald R. Stands (New London)        | May 5, 2004   |
| Lennart M. Berg (Middletown)         | May 7, 2004   |
| Christine Anne Eldridge (Middletown) | May 8, 2004   |
| Stanley J. Slusarski (Middletown)    | May 16, 2004  |
| John F. Conroy (Branford)            | June 1, 2004  |
| LeRoy R. Green (Essex)               | June 6, 2004  |
| Joseph F. Perrone, Sr. (Hartford)    | June 19, 2004 |
| John Julius Cornelius (New London)   | June 22, 2004 |



*This PTO memorial playground at Mile Creek School was just completed this past summer. It is handicapped accessible and dedicated to the memory of Wyatt Lee Frantz.*



*Mile Creek School gymnasium—no more stage, but the teacher now has an office with a window!*



*The new Center School playground's multifunction playscapes have been replaced by a greater number of apparatuses, each with specific functions and handicapped accessible. The ground is also covered with a more resilient mulch.*



---

## American Legion Post #41

William R. Stelzner  
*Adjutant*

**L**yme Post #41, American Legion, serving Lyme and Old Lyme, meets on the fourth Tuesday of each month from September to June at 7:30 p.m. in the Old Lyme Memorial Town Hall. All veterans are welcome.

A newsletter that outlines our programs and activities for veterans and youth is sent each month to every member and prospective members. It also contains other information beneficial to veterans. Youth programs sponsored by the Post are the annual Memorial Day Essay contest for students in grades five and six. This year's winners were Tory McKnight, Samantha Yuknat, and Spencer Mangs. Each was presented with a bond and an American flag that had previously flown over the White House.

Our candidate to Boy's State this year was Andrew Powlaney. Students from all over the state set up and operate a mock government for one week, elect officials and legislators, and pass laws.

We sponsor the very popular "Drugs Destroy Dreams" poster program for students in the third and fourth grades. Winners in each grade receive medallions. All students receive lapel tacks.

On Memorial Day weekend, we have "Poppy Days." All donations received during this effort are used to support our activities throughout the year. We participate in the Memorial Day parade and Veteran's Day ceremonies. We also place flags on veteran's graves in local cemeteries on the Saturday preceding Memorial Day.

We are proud to be of service to many organizations, both with manpower and donations, including the Rocky Hill Home and Hospital for Veterans.

We invite all eligible who live in Lyme or Old Lyme to apply for membership. Call me at 434-9812 for information and applications or come to one of our meetings.

---

## Assessor

Walter E. Kent, Jr.  
*C.C.M.A. II*

**T**his past year saw an increase in the grand list from \$903,325,180 to \$908,273,130.

This increase was largely due to new real estate construction. Motor vehicles and personal property have tailed off this past year.

At the time of this report the first phase of the revaluation has been completed. The

informal hearings are done and representatives from Vision Appraisal will be making any adjustments that may have occurred.

The next revaluation will be in 2009.

As always this office is ready to answer any questions that pertain to assessment administration, Monday through Friday, from 9:00 a.m. to 4:00 p.m.

# Board of Finance

---

**Mark C. Diebolt**  
*Chairman*

**L**ook At Us Now” is an appropriate theme for this year’s Town Report because it asks us to take a moment to consider two different large construction projects that will positively impact Old Lyme for years to come. Of the two projects, the renovation of the schools within District 18 is complete, and the Town Woods Road Park construction is mostly complete, with fields opening for play in the fall of 2004. Both of these projects reflect significant financial commitments from both Old Lyme taxpayers and the State of Connecticut; they are important investments today and for the future of Old Lyme

The Town of Old Lyme remains in excellent financial shape, retaining its AA Bond Rating, low debt, and a prudent undesignated surplus of \$2,380,500. Fiscal year 2003-2004 was a year of transition for the Board of Finance that saw four new members and a new chairman. By teaming veteran members with new members to become specialists on various aspects of the proposed budget, the board and the first selectman delivered a final budget with a 2.9%

decrease in municipal spending. Accordingly, the 8% increase in the mill rate was as a result of the District 18 school construction bonding and operating budget increases. The board also continued to deploy and update a detailed five-year capital plan. It is important to remember the Board of Finance only controls spending on approximately 25% of the town’s total operating budget, the balance being the regional school. Per state law a Regional District Board of Education controls school spending, which accounts for the other 75%. Old Lyme is part of Regional District 18, and its education budget is voted on separately every spring by the District 18 taxpayers.

The mill rate of 25.5 was set after the annual town budget meeting in May. The complete Budget Financials are contained in the colored sheets towards the middle of this book.

The Board of Finance would like to thank all department heads, board chairs, and First Selectman Timothy Griswold plus all town employees for their help. A special thanks goes to board secretary Michele Hayes Finn and our town report editor, Michele Dickey.



*The office at Center School now offers a view of the front door for better security.*



*This Center School classroom was originally the kindergarten; the classic wooden lockers with animal cutouts have been removed.*

# Building Department

Ronald E. Rose  
Building Official

## BUILDING PERMITS ISSUED FROM JULY 1, 2003 TO JUNE 30, 2004

|   |                             |                 |
|---|-----------------------------|-----------------|
| 33 Permits                                  | Accessory Building .....    | \$1,101,433.00  |
| 63 Permits                                  | Additions.....              | \$2,896,100.00  |
| 14 Permits                                  | Additions/Alterations ..... | \$1,125,000.00  |
| 61 Permits                                  | Alterations .....           | \$3,875,394.00  |
| 2 Permits                                   | Barns .....                 | \$83,440.00     |
| 2 Permits                                   | Chimney/Fireplaces .....    | \$3,650.00      |
| 2 Permits                                   | Commercial Buildings.....   | \$231,000.00    |
| 12 Permits                                  | Demolition .....            | \$45,275.00     |
| 1 Permit                                    | Dock.....                   | \$1,080.00      |
| 263 Permits                                 | Electrical.....             | \$238,212.00    |
| 21 Permits                                  | Foundations .....           | \$10,596,875.00 |
| 12 Permits                                  | Garages .....               | \$430,200.00    |
| 157 Permits                                 | Heating A/C.....            | \$477,171.00    |
| 26 Permits                                  | New Residence .....         | \$488,945.00    |
| 175 Permits                                 | Plumbing.....               | \$108,234.00    |
| 13 Permits                                  | Pools.....                  | \$238,785.00    |
| 174 Permits                                 | Repairs .....               | \$1,570,823.00  |
| 26 Permits                                  | Replace Fuel Tank .....     | \$40,490.00     |
| 2 Permits                                   | Satellite Antennas .....    | \$250,000.00    |
| 1 Permit                                    | Security.....               | \$0.00          |
| 5 Permits                                   | Wood Stoves.....            | \$0.00          |
| Total Cost of Permits Issued.....           |                             | \$23,802,107.00 |
| Total Number of Permits Issued.....         |                             | 1,065           |
| Total Fees Received During Fiscal Year..... |                             | \$219,916.00    |
| Total Cost of Permits Issued.....           |                             | \$23,802,107.00 |



*The former Center School library is now  
Mrs. Mulligan's fifth-grade classroom.*

# Cable Advisory Council

---

**Chuck Lynch**  
*Chairperson*

The role of the Cable Advisory Council is to represent and advocate for the interests of cable subscribers with the DPUC and the cable provider. During the past year the Advisory Council met on a bimonthly basis to monitor the level and quality of service and the status of the company since it declared bankruptcy.

On the positive side, Adelphia maintained its level of service in terms of programming and improved signal strength and continued to provide services such as high-speed Internet access. A "Limited Basic Service" package was offered for \$7.00 per month and new channels of programming were provided across the spectrum. The Connecticut government channel, CTN, was given its own channel, which opened opportunities for more educational programming on the educational access channel (Channel 12). As a result, the educational channel now has twenty-four-hour educational programming from sources such as Annenberg/CPB and NASA. Six ESPN "pay-per-view" channels were added and DVR (digital video recorder) services were made available. Also, thirteen High Definition TV channels were introduced. However, the rising cost of cable services continues to be the subject of much discussion and concern.

While service at the local level showed

some improvement, there is great uncertainty about the future of the company. It is unclear as to whether the company will emerge from bankruptcy refinanced and intact or will be sold to another cable system as a whole or in parts. The national franchises are clustered into seven regions and have been put on the auction block as this report is being written. The unfortunate result of a sale to another cable system or systems is the reduction of competition in the cable industry. Adelphia is currently the sixth largest cable company in the United States. If it is acquired by another cable system there will be even less competition in the industry. This is particularly worrisome when you consider that this also means less competition for who controls access to the Internet.

As Adelphia has reorganized financially and organizationally more and more decisions are being made at the corporate level rather than by local management. Similarly, local customer service personnel were reduced substantially in order to implement a national twenty-four-hour customer service center. While this is a trend among cable and other industries only time will tell if it improves the efficiency and effectiveness of customer service. Individual subscribers with questions or concerns should feel free to contact Adelphia management (889-6269) or the Cable Advisory Council.



*The Lyme-Old Lyme High School television station, WLYM, which broadcasts four minutes of announcements, school news, and sports to all classrooms each morning.*



*WLYM cameras, staffed by groups of three students rotated from a group of about eighteen trained by advisor/librarian John Byrne. While some students prefer to be in front of the cameras and some behind, Byrne trains all in all capacities, stressing the life lesson, "The more valuable you make yourself to an organization, the longer they'll keep you."*

## Citizen of the Year - 2003

The Board of Selectmen presents

### Constance L. Kastelowitz

this Award for her commitment to our community

**A**fter sailing to ports up & down the East Coast, world-traveler and Buffalo, New York, native Connie Kastelowitz retired to Old Lyme with her husband, Adolph, in 1979. Adolph was a Planning Commission alternate in the 1980s. Connie followed his lead.

First elected in 1992, Connie has served Old Lyme as a member of our Planning Commission for over a decade. She co-authored & edited the 2000 Plan of Conservation and Development and chaired the committee charged with developing our town's first Open Space plan. Connie has been an active member of the Open Space Committee since its inception.

A 50+ year volunteer for the American Red Cross Blood program, Connie has donated over 100 units herself. Both the Circle of Hope Committee for the American Cancer Society and High Hopes Therapeutic Riding have benefited from her generosity. A High Hopes office volunteer in the early 1990s, Connie welcomed a visiting Special Olympian into her home in 1995. She currently serves as



*Connie Kastelowitz receives award from First Selectman Tim Griswold at Annual Town Meeting, January 26, 2004.*

secretary for all of the major benefit events organized for High Hopes.

Connie has provided over 10,000 hours of service to Yale-New Haven Hospital since 1994. She was recognized by Yale-New Haven for the Adolph and Constance Kastelowitz Fund for the Emergency Department and recently established the Connie Kastelowitz Scholarship Fund to fund continuing education in emergency nursing.

Connie Kastelowitz has been a guiding hand in the development of our community, and is a shining example of selfless dedication. We are honored to name her

our 2003 Citizen of the Year.

*Board of Selectmen Town of Old Lyme*

**Timothy C. Griswold**

**Arthur E. Sibley, Jr.**

**Bonnie A. Reemsnyder**

# Connecticut River Estuary Regional Planning Agency

---

**Linda Krause**

*Executive Director*

**Alan Bayreuther, Jane Marsh**

*Delegates*

The Connecticut River Estuary Regional Planning Agency (CRERPA) is in its 36th year of planning for the nine-town estuary region. CRERPA consists of two representatives from each member town, one representing the Board of Selectmen, the other, the Planning Commission. Our chairman is Bruce Edgerton of Deep River. The board meets on the first Monday of each month at 7:30 p.m. at the agency office in the Saybrook Junction Marketplace. Visitors are always welcome to stop by from 9 a.m. to 5 p.m. Monday through Friday.

CRERPA is supported financially by a variety of Federal, state, and local sources but mainly the annual contribution of its nine member towns, with other major support coming from the Connecticut Department of Transportation, the State Office of Policy and Management, and the Connecticut Department of Environmental Protection.

CRERPA helps its member towns work together voluntarily to solve common problems affecting the Estuary Region. During the year, CRERPA provided staff support and meeting space for several area organizations including the following:

The Lower Connecticut Valley Selectman's Association (LCVSA) brings the chief elected officials of the region together monthly to discuss common interests, including transportation, elderly services, solid waste disposal, and recycling. On behalf of LCVSA, CRERPA completed construction of a long-planned regional household hazardous waste facility in May. The LCVSA also serves as the Metropolitan Planning Organization for transportation planning purposes for the Estuary Region.

The Connecticut River Gateway Commission, which meets monthly at the CRERPA office, was established in 1973 by State Statute to protect the scenic and environmental qualities of the Lower Connecticut River through a compact among the eight towns that border the river estuary. The commission actively participates in the acquisition of land and easements for conservation purposes. Gateway member towns

have agreed to adopt common zoning standards for development in the area near the river. Recent revisions to these standards address the proliferation of large-scale development along the river.

Tidewater Institute was created in 2003 to address key threats to the significant natural resources of the Connecticut River Estuary. Initially funded in part through CRERPA, with assistance from the Gateway Commission, additional grants and donations have been received to continue the work during the coming year.

The Estuary Transit District (ETD) was established in 1981, with the help of CRERPA, to provide public transportation in the region. In July 2003, CRERPA successfully transferred administration of the program to an independent office for the Estuary Transit District. Stan Greimann was hired as interim director until Jim Rode took over the administration of the public transit service in November 2003. CRERPA continues to provide comprehensive planning services for the district. This is a critical function as the district, under the capable direction of Jim Rode, continues to expand programs, hours, and routes.

The Cable TV Advisory Council (CATV) was established in 1984 to give cable customers a voice in expressing their needs and desires in cable programming. Estuary towns in the Council include Chester, Clinton, Deep River, Durham, Essex, Haddam, Killingworth, Old Lyme, Old Saybrook, and Westbrook with representatives from selectmen, boards of education, and libraries.

A major component of CRERPA's work program is technical assistance to individual member towns. Staff members have helped several towns work on their Plans of Conservation & Development, provided zoning enforcement backup for municipal staff, and assisted in developing new zoning regulations. They have provided consultant planning services, reviewing projects independent of the agency's normal regional duties. Staff is available to answer questions or conduct research on land

use and planning matters for local officials. They help with open space plans to help create a regional greenway.

With a grant through the Long Island Sound license plate fund and supplemental funding from the Gateway Commission, GIS Specialist Margot Burns has prepared educational materials on acquiring and stewarding conservation easements, as well as a preliminary GIS database of conservation easements located within Conservation Zone towns.

The agency provides information and education on regional planning issues intended to carry out the recommendations of the Regional Plan of Development. We are developing a new CRERPA Web page at [crerpa.org](http://crerpa.org).

A ribbon-cutting ceremony was held on June 24 for the regional household waste permanent facility in Essex. Ralph Eno of Lyme was hired as the Household Hazardous Waste (HHW)

Coordinator for the facility and arranges for HHW collections for the estuary towns. Sixteen on-site collections and five satellite collections will be held from May through October. Clean Harbors Environmental Services is the chemical waste handler for the facility. Amy Cabaniss serves as the CRERPA Regional Recycling Coordinator and Environmental Educator.

Other projects this year have included providing state boaters with a guide to keeping waters clean contained in DEP spill kits; creating Natural Hazard Mitigation plans for the nine individual towns that, when adopted, will make mitigation funding available; coordinating domestic preparedness planning; compiling a study of private residential docks within the lower Connecticut River; and completing the fourth of a series of laminated canoe and kayak maps available at libraries and CRERPA.

## Commission on Aging

Don Tapper  
*Chairman*

**T**his year's report is dedicated to Ruth Breitzke, who has retired from the commission. She was a member of the original commission and has served the town well for many years. Ruth and her late husband, Ernst, dedicated much of their golden years to the senior population of Old Lyme, including the building of the senior center. Many thanks to Ruth and Ernst.

Other projects worked on by the commission this year include estuary funding for the town,

a talk with the state insurance commissioner's office, a speaker on gifts and inheritances, and the holiday basket program.

The commission meets at the senior center on the third Tuesday of the month at 1 p.m. We invite anyone with senior concerns to attend.

As a commission, we encourage all seniors to take advantage of our senior center programs. Our director, Kay Mannetho, continues to do an excellent job serving the many needs of our growing senior population.



*The high school library, where the mission statement is displayed.*

# Connecticut River Gateway Commission

---

Rudi Besier, Ted Crosby  
*Delegates*

In 1973, the Connecticut Legislature recognized the Lower Connecticut River Valley as one of the state's most important natural, recreational, and scenic areas and authorized establishment of the Connecticut River Gateway Commission, which became operational in 1974, with eight eligible towns, two regional planning agencies, and the Connecticut Department of Environmental Protection participating. It is staffed by members of the Connecticut River Estuary Regional Planning Agency and includes two delegates from each member town.

The Gateway Conservation Zone, stretching about thirty miles upstream from the river's mouth, includes those portions of Chester, Deep River, East Haddam, Essex, Haddam, Lyme, Old Lyme, and Old Saybrook within view of the river. This area's tidelands have been recognized by the Nature Conservancy as one of its "Last Great Places" and by the international Ramsar convention as an "internationally significant" habitat for waterfowl. The Secretary of the U.S. Department of Interior called the Lower Connecticut River Valley "one of the most important ecological landscapes" in the United States. In 1999, the Connecticut River was designated as one of fourteen American Heritage Rivers by the President of the United States.

The Connecticut River Gateway Commission has concentrated on protecting key lands along the river that contribute to the valley's scenic qualities, having been instrumental in protecting almost 2,000 acres of land through gifts or purchase of scenic easements, development rights, and fee simple titles. This protected land is located in all eight towns, ranging from the estuarine marshes of Old Lyme to the heights of Mount Tom in East Haddam. The commission

receives no state financial support and relies on income from its land acquisition fund to meet its administrative costs of about \$15,000 per year.

Another significant Gateway Commission role is establishing common zoning standards that member towns have agreed to adopt and enforce within the Gateway Conservation Zone. At its monthly meeting, the commission reviews and acts on zone changes and variance applications affecting land within this zone referred to it by local boards and commissions. No zone change within the Conservation Zone can become effective without the commission's approval.

In 2004, the commission approved revised zoning standards to "preserve the unique scenic, ecological, scientific and historic values of the lower Connecticut River valley for the enjoyment of present and future generations of Connecticut citizens." The new standards include a requirement for a vegetated buffer area along the riverfront, clarification of limitations on the height of structures, and greater emphasis on blending new structures with existing topography and landscaping. These standards are in response to continuing concerns over highly visible large new homes along the river bank and in the upland hills facing the river and extensive tree-cutting for new development or new views for existing development.

The commission helped organize and present a series of informational forums about the Connecticut River and is exploring bringing community leadership training workshops, through Pace University, to the Connecticut River Valley.



---

## Conservation Commission

Ellie Czarnowski  
*Chairman*

Old Lyme's Conservation Commission was enacted in March 2004. The Conservation Commission may make recommendations to the Zoning, Planning, and Inland Wetland Commissions and the Water Pollution Control Authority or other municipal agencies on proposed land-use changes. Our meetings are the first Wednesday of every month except January at Memorial Town Hall at 7 p.m. All are welcome.

The Conservation Commission has published several articles on topics such as pesticide alternatives, low-water plantings, and outdoor fixtures that reduce light pollution. We have also written letters of recommendation to the Planning Commission regarding subdivision plans. If you would like to become a commission member please contact the Land Use Department at town hall at 434-1605, extension 234.

---

## Economic Development Commission

Robert W. Jose  
*Chairman*

The Economic Development Commission's mission for the Town of Old Lyme includes promoting business, industrial, and residential growth within town that we feel is appropriate and consistent with the overall plan. To that end, during this past fiscal year the commission concentrated on continuing efforts toward the revitalization of the Sound View area, expanding the research and development on the biking/hiking trails, and additional work toward finalization of an Arts/Tourism Writers' Day.

The Sound View Task Force meets on a regular basis and is composed of various members of interested town agencies, including the Economic Development Commission (E.D.C.) and other town residents including members of the Sound View Beach Association. The current activities are focused on finalizing a Sound View Development ordinance that would help provide a framework for development in the area.

The work on the Arts/Tourism Writers' Day has continued to be spearheaded by John

Stratton, a E.D.C. member, with the goal of having the tour sometime in spring 2005. The objective of the tour is to provide a time when various media writers would have an opportunity to view the town, meet with representatives from the arts and retail community, and then incorporate what they have seen into what they write, creating more business for town attractions.

Last year's hiking/biking trail initiative has expanded to focus on connecting the center of town not only to the shoreline but to other areas in town as well. The resolution of the right of ways will continue to take time. We have also met recently with Ted Crosby to discuss the ecotourism concept to attract people from within and outside of the town to encourage more utilization and enjoyment of open spaces, such as Watch Rock. It is hoped that such "ecotourists" will, at the same time, also utilize other goods and services that our town has to offer.

The Economic Development Commission meets the first Wednesday of every month at 8 a.m. in the town hall. The public is welcome.

# Estuary Council of Seniors, Inc.

---

Mitzi N. Eilts  
*Executive Director*

The Estuary Council of Seniors, Inc. (ECSI) works with and serves people fifty-five years of age and older in nine shoreline towns. Our mission is to maximize the independence, dignity, and quality of life of all seniors in the region. Our primary program site is the Senior Center located in Old Saybrook utilized by seniors from all nine towns. We also provide lunch and limited programming at sites in four other towns including Lymes' Senior Center. The Estuary Council is responsible for Meals on Wheels, Estuary Medical Outpatient Transportation, and two days a week Dial-A-Ride for Old Lyme seniors.

Funding for our programs comes from the Older Americans Act and the State of Connecticut through Senior Resources Agency on Aging (Norwich), the nine estuary-region towns, donations from clients, our Estuary Thrift Shop, foundation grants, and multiple fundraising efforts and activities. The in-kind contributions of volunteer hours are enormous; most of our services and programs would not be possible without the weekly dedication of over 200 regular volunteers. The Estuary Board of Director members from Old Lyme for the 2003-2004 fiscal year are Mary Miles, Secretary, and Dr. Joan Flynn.

## **Old Lyme residents' use of services and programs - July 1, 2003 to June 30, 2004:**

3,582 meals at the Lymes' and Old Saybrook Senior Center's Café (214 individuals)

3,082 homebound meals (Meals on Wheels – lunches and dinners) (39 individuals)

1,706 Dial-A-Ride transportation to medical appointments, shopping, meal sites, beauty parlor, pharmacy, bank, etc. (44 individuals)

137 EMOTS (18 individuals)

186 newsletter recipients, *Gazette* (mailing list was updated in fall of 2003)

47 support services – counseling and benefits, support groups (22 individuals)

69 preventative health education and health screens

807 recreational, education, and exercise activities (86 individuals)

57 entertainment programs, tax assistance, mature drivers, and other services/activities (38 individuals)

Residents of all nine towns are welcome to meals, programs, and services at the Monica Eggert Senior Center as well as any of the four satellite locations. We are open to the public and encourage seniors to bring family and friends to meals and activities. Often children will bring their elderly parents and introduce them to the Estuary Center.

We offer lunch five days a week at noon at all the cafes and made-to-order breakfast Monday through Saturday at the Old Saybrook location, with a beautiful view of the estuary and river! Medical transportation beyond the estuary region (EMOTS) is available Monday through Friday. We offer recreational and shopping trips, dinners and entertainment, computer and art courses. Bocce and horseshoe games, golf outings, pool players' tournaments, mahjong, chess, and card games are regularly scheduled. We provide a medical loan closet (walkers, wheelchairs, toilet seats, canes, etc), nutritional counseling, preventative health programs, individual screening by registered nurses, a variety of support groups, and weekly exercise and dance classes.

We sincerely appreciate the funds the town of Old Lyme and its residents allocate annually to ECSI. These funds allow us to meet required matches for grants awarded especially for nutrition, transportation, benefits counseling, and preventative health programs. Thank you!

## Eastern Connecticut Regional Tourism District

---

Roderick M. White  
*Representative*

Until this year there were twelve tourism districts in the State of Connecticut. At that time the southeastern district, known as “Mystic and More,” represented twenty-one municipalities. These districts are state funded and receive their funds partly from the hotel tax (most of which goes to the general fund).

Each of these twenty-one towns had a representative to the board of directors, which also included a few representatives of the tourism “industry.” The goal was to enhance the economic base through tourism. I was privileged to serve as Chairman of the Board for two terms.

This year the state reduced the number of districts to five and reduced funding very significantly, which meant much more of the hotel tax went to the general fund. The new district is called “Connecticut East” and now includes the northeast part of the state, known as the “Quiet Corner.”

My responsibility remains to do my best to look out for Old Lyme’s interest and promote tourism for support of the economy. It may surprise you to know that the tourism industry is the LARGEST employer in eastern Connecticut, even if you discount the casinos!

## Estuary Transit District

---

Jim Rode  
*Administrator*

The Connecticut River Estuary Region consists of Clinton, Chester, Deep River, Essex, Killingworth, Lyme, Old Lyme, Old Saybrook, and Westbrook. The mission of the Estuary Transit District (ETD) is to provide local, coordinated public transportation for residents of this area. Its affairs are managed by a board made up of one representative from each town, each having a weighted vote based on the population of the town he or she represents. These delegates serve in a voluntary capacity to adopt ETD bylaws and rules. With the loss of long-time member David Jones there is one vacancy for the town of Old Lyme. Regular meetings are held on the third Monday of the month at 8:00 a.m. in the ETD office at Saybrook Junction Market Place, 455 Boston Post Road, Old Saybrook, CT. All meetings are open to the public.

The Estuary Transit District recorded a total of 47,345 trips on its services, which represents a 22 percent increase over last year’s 36,606 trips. The ETD began the year with a fleet of seven vehicles. Some of these buses had well over 100,000 miles, so efforts began early on to replace the oldest. During the year two new buses were purchased and two used buses were transferred from the Estuary Senior Council for use in ETD services. Two buses were sold at auction and at this time one more bus will soon be removed. At year’s end the current fleet stands at eight buses. All buses are fourteen-passenger and wheelchair-accessible;

four have bike racks installed on the front and plans are to get racks for the rest of the fleet. In the upcoming year two more vehicles will be purchased and two retired. Capital funding for replacement vehicles comes from State and Federal Department of Transportation Grants.

The EDC oversees the operation of two distinct public transit services. The first of these is the Shoreline Shuttle, which operates on a flexible service route (fixed route with off-route stops available) in the shoreline towns of Clinton, Westbrook, and Old Saybrook, Monday through Saturday. (Residents of all EDC towns can use the service but must pick it up in the three towns on the route.) Off-route service is scheduled with 24-hour advanced reservation. The Shoreline Shuttle has been able to provide continuing service along the Route One Corridor since 1999. In January 2004 the fares were increased from \$1.00 for on-route stops and \$2.00 for off-route service to \$1.10 and \$2.20 respectively. This service meets the CTRANSIT ‘S’ route in Madison and offers free transfers, allowing riders to travel from New Haven to Old Saybrook for a \$1.10 fare, and the route may be extended to Niantic and East Lyme in the near future. Free transfers are also available for monthly rail pass holders using the Shoreline East Commuter trains. Transfers accounted for some 3,171 trips out of the total 31,972 trips recorded for the Shoreline Shuttle service.

The second service is a public dial-a-ride program referred to as the Public Bus.

## Estuary Transit District *(continued)*

---

The Public Bus service is a “personalized” transportation program available in all nine ETD towns. This program saw several changes during the year. In September 2003 ESCI announced that it was discontinuing its senior dial-a-ride program. When that service ended the Public Bus experienced a 30- to 40-percent increase in ridership. In January 2004 ETD established a regular fare for the service of \$1.10. This new service revenue was used to offset the costs of operation. Ridership for this service averaged over 1,200 rides per month and at year’s end 15,373 trips were provided, an increase of over 61 percent.

Historically the board met several times a year to set policy, approve expenditures, and establish an operating and capital budget for the next year. Since its inception, district services were provided by contracts with the Connecticut River Estuary Regional Planning Agency (CRERPA) for administration and with the Estuary Council of Seniors, Inc. (ECSI) for the operation of transit services. During the fiscal year just ended June 2004, the district began a process of reorganization.

In July 2003 the Estuary Transit District Board ended its contract with CRERPA to manage its own affairs. The split was amicable and ETD found new office space in the same complex. Stan Greimann rejoined ETD as the Interim Administrator. Estuary Transit services continued without interrupt due in large part to the efforts of board Chairman Doris Sanstrom coupled with the help and experience of Greimann. In November 2003 the board hired

James Rode as Administrator, its first full-time employee.

In January the district saw a need for an expansion of services in the area and developed a plan that called for an expansion of service hours with greater focus on the coordination of ETD services with other area transit providers. There was concern that expansion of transit operations would burden the service provider, ECSI. The board decided at its meeting in March 2004 to develop a Request for Proposals (RFP) with the intention of putting its service contracts out to bid. The competitive RFP process that began in March ended in June with the awarding of those contracts to DATTCO Inc.

For more than twenty years the Estuary Council of Seniors, Inc. was the operator of the Public Transportation programs in the region. These programs could not be the success they are today without the hard work of the ESCI staff and drivers. In the upcoming fiscal year ETD will continue its campaign to revamp transit services throughout the area. Building on the success of its shoreline flex route, the district will develop new routes in the towns of Chester, Clinton, Deep River, Essex, and Old Lyme and a public dial-a-ride service is in the works. Regular bus stops will be established at the local train stations and schedules will be coordinated to facilitate transfers. New marketing efforts have begun and the district continues to work closely with several different agencies to promote greater community involvement in public transportation.

## Fire Marshal

---

**Philip J. Bliss**  
*Fire Marshal*

**D**uring the fiscal year 2003-2004 our top priority has continued to be compliance to the State Fire Code by District 18 and its building contractors during rehabilitation of the school structures. In addition, we perform required annual fire safety inspections of occupancies prescribed by the Fire Code as set forth in Chapter 541 of the Connecticut State Statutes.

Fortunately, fire losses in town during the year were low, with only three major residential structure fires occurring. These fires, while sustaining no loss of life to the occupants, did create significant structural damage to

the residences, each requiring extensive reconstruction. In addition, the Old Lyme Fire Department responded to several vehicle fires on I-95, which we investigated.

As part of state-mandated continuing education, the fire marshal and his deputy attended various in-service classes conducted by the Office of the State Fire Marshal. The District 18 school renovation project continues to focus on the Center School; we anticipate continued cooperation of the District 18 Building Committee and contractors to ensure full compliance with provisions of the Connecticut Fire Safety Code.

# Health Department

**Ronald E. Rose**  
*Sanitarian*

**Marilyn H. Swaney**  
*Administrative Assistant*

**John V. Flower**  
*Assistant Sanitarian*

**Vijay Sikand, M.D.**  
*Director of Health*

**Environmental Health Incidents**

Inspection of Food Handling Establishments..... 22  
 Nuisance Orders Issued..... 6  
 Complaints Investigated..... 12  
 Septic System Inspections ..... 116  
 Septic System Permits Issued – Repair ..... 54  
 Septic System Permits Issued – New..... 31  
 Well Permits Issued ..... 41  
 Test Holes & Perc Tests (Sites)..... 94

Fees Collected - \$7,305.00)

**Communicable Disease Report**

Salmonellosis..... 2  
 Babesiosis ..... 7

Campylobacteriosis ..... 2  
 Influenza A ..... 1  
 Ehrlichiosis..... 2  
 Hepatitis B..... 3  
 Hepatitis C..... 9  
 Gonorrhea ..... 2  
 Lyme Disease..... 1  
 Toxoplasmosis ..... 1  
 Lead..... 2  
 Pneumococcal ..... 3  
 Rabies (Dog) ..... 2  
 Staphylococcus ..... 2  
 Syphilis..... 1  
 Anti HCV (EIA) ..... 1  
 Giardiasis ..... 2

## Historic District Commission

**Jim Bechtel, Ken Levin**  
*Co-Chairmen*

The Historic District runs from #1 McCurdy Road at the South Green for approximately 1.5 miles to #2 Sill Lane and #1 Rose Lane at the North Green. Of the 75 properties included, approximately 50 have buildings dating before 1900 and 8 have structures begun before 1800. To protect the character of the Village, town citizens voted in 1971 to create the Historic District. In 1972, the district was placed on the National Register of Historic Places.

Governed by state statutes, the Historic District Commission works to preserve the unique “character” of the street by insuring that no building or structure may be “erected, altered, removed or demolished” until a Certificate of Appropriateness has been issued. In considering applications, the commission has no requirements as to specific architectural form or style – only that new structures, or alterations to existing structures, be appropriate and competently designed and show respect for both immediate neighbors and the Historic District as a whole.

In 2004, the commission was proud to play a part in the renovation of the Center School building on Lyme Street. This town icon is the most visible of all the school structures in Old Lyme and it was therefore imperative

that all necessary repairs be handled with great sensitivity. The school board and their architectural firm, Kaestle Boos Associates, were very much aware of this 1934 landmark’s place in the community and were most respectful and responsive. As a result of several meetings, a new, slate-like shingle for the roof was selected and a bus and parent drop-off roadway was created. The latter will allow for greater child safety and help reduce the school-bus congestion on Lyme Street.

In addition to assisting individual homeowners with advice and/or permission on house alterations, this year’s more public issues to come before the commission included the following:

- Church Corner – Running from Ferry Road south and east onto McCurdy Road, this noteworthy section of Lyme Street contains the First Congregational Church (1910), the Charles H. Luddington house (1895), the Marvin-Griffin house (prior to 1820), the South Green, and the entrance to the new Christ the King Church. The plan proposed by the Church Corner Committee and endorsed by the Historic District calls for bluestone sidewalks; granite curbing and edged crosswalks; old stone bollards rounding the corner from Christ the King’s new entrance on

## Historic District Commission *(continued)*

---

McCurdy and connecting to those in front of the Congregational Church; a realigned entry drive to the two residences located on the Green; and defined parking along Ferry Road, Lyme Street, and McCurdy Road.

- Lyme Street Improvements – Leveling, narrowing, paving, and granite curbing of the street is planned from the firehouse to the Congregational Church parsonage.

- The Roche House – Since the return of this late nineteenth century farmhouse to private hands, the new owner has worked closely with the commission to ensure that all improvements to the home and property are harmonious with its history and sympathetic to the neighborhood.

- Christ the King Church – While the new church and parish hall are beyond the Historic District's limits, granite curbing to match that used at Church Corner was approved for the first 50 feet of the entry road.

- The Old Lyme Inn – A boxwood-edged terrace was added for outside dining.

- Signage Regulations – In the interest of maintaining the character and appeal of Lyme Street while at the same time sustaining the commercial possibilities of the Historic District, certain clarifications were made to this section of the Commission's Handbook. These changes were incorporated in an early summer mailing to all nonprofit organizations, business establishments, professional offices, and associations or societies on Lyme Street.

## Lyme Historical Society

---

Jeffrey W. Anderson

*Director*

The Florence Griswold Museum, headquarters of the Lyme Historical Society, applauds Old Lyme's efforts to renovate its school buildings for the service of its students. We contributed in a small way to the renovation of Center School by working with Principal Adam Burrows to safely store all of the paintings owned by the school during the period of construction. Newly installed in the school today, they serve as a welcome reminder of the heritage and history of our town and the special role that it has played with artists of yesterday and today.

Today the Florence Griswold Museum is a dynamic place for the community to gather and to learn. Last year, 49,044 people visited the museum or took part in one of our off-site programs. Over 7,000 of those visitors were school children, including those from throughout District #18, who participated in field-trip experiences that combine visual thinking with hands-on learning. The increasing use of the museum by teachers and students is one of the most exciting developments here. Artists are once again painting on the site, both on their own and through programs such as *Impromptu Encounters* that give people of all ages an opportunity to try their hands at outdoor painting. Over the past year the museum was the setting for lively festivals, concerts, special events, and diverse educational programs for

the benefit of the community.

One of the Florence Griswold Museum's strengths is its collection of American art and history, much of which relates to the people of Old Lyme. I am pleased to report that over the past year significant additions were made to the collection. These include works by Harry Hoffman, William Morris Hunt, Frederick Sexton, Everett Warner, Edward Volkert, and Oliver Lay. We are grateful to each of the donors who gave to the museum's collections. Thanks to a grant from the Institute of Museum and Library Services, conservators have evaluated the condition of every painting owned by the museum. This will form an invaluable guide for managing and preserving the collection in perpetuity.

In addition to serving our community, the Florence Griswold Museum welcomes visitors from across the country to experience the art, history, and landscape of Old Lyme. The role of the Griswold Museum as a cultural destination and as a contributor to the economic health of the region was recognized in June of 2004 with a Governor's Arts Award for Artistic Achievement in Tourism from the State of Connecticut. Such recognition speaks to the value that this museum is adding to people's lives. With the support of the community, we will seek to build on this for the years to come.

# Lymes' Senior Center

Kathryn Mannetho  
Director

Ever since it opened in 1996, the Lymes' Senior Center has been striving to give the senior citizen population of Lyme and Old Lyme a place to come and enjoy the company of friends and neighbors and share a hot meal and wonderful informative activities.

The center is open from 9 a.m. to 4 p.m. Monday through Friday to all seniors 60 or older. Our current membership is 760; 360 of those are active members who receive our newsletter four times a year paid for with a membership fee of \$5 (\$10 for nonresidents).

We have activities and programs that challenge the mind as well as the body. The center provides a pleasant atmosphere to enjoy old friends and perhaps meet new ones.

To serve your health needs the Old Lyme V.N.A. is here from 12 to 1 p.m. Monday through Friday for blood pressure screening and general consultation with Linda Camarra. The V.N.A. also hosts a health day on the first Saturday in November.

We have a full morning schedule that includes exercise classes, Tai'Chi, Yoga, and water-color classes. Top this off with lunch every day at noon for a donation of \$2.25.

Our afternoons offer creative writing and computer workshop with Internet access and informal instruction. We also have a group of weekly bridge players. There are monthly birthday parties and bingo to round out our afternoons. We also offer 55 Alive every three months and an array of random activities. We have a wonderful library with many current works of well-known authors

The Lyme-Old Lyme V.F.W. Post 1467, A.A.R.P, Lymes' Senior Club and Craft Group, Lyme Garden Club , Lyme/Old Lyme Lions Club, and Lyme/Old Lyme Junior Women's Club make us their home for meetings and functions.

Plan to get acquainted with your Senior Center – it is well worth the effort. Call 434-4127 for all information.



*View across two playing fields  
toward park building*

*The view from the senior center that USED to be corn fields . . . now looks like THIS instead!*

# Lyme-Old Lyme High School

Thirty-first Annual Commencement - June 21, 2004

## Candidates For Diplomas

|                              |                                |                               |
|------------------------------|--------------------------------|-------------------------------|
| Brendan Michael Atkins       | +* Abby Lynn Hahn              | Daniel Joseph Pegnataro       |
| + ^ Norman Guillaume Azoulay | * Nathan Peter Hallman         | Thaddeus Thomas Powers        |
| Chad Alan Bennett            | * ^ Elana Catherine Hapis      | Samuel Paul Punzalan          |
| John Andrew Betz             | ^ Darcy Ann Harris             | +* Ryan Patrick Quinn         |
| + Jesse Lee Brockwell        | Kelly Celeste Harris           | Amanda Drew Rasmussen         |
| Jonathan Peter Buroff        | +* Maureen Lynn Hautaniemi     | Daniel Robert Reemsnyder      |
| * Keren Alexandra Camean     | + ^ Heather Hillary Heye       | +* Matthew Aaron Rice         |
| Thomas Boston Clarkson       | Jessica Stephanie Holland      | Krystle Lynn Robertson        |
| Sean Joseph Cody             | ^ Elizabeth Leigh House        | Amy Lynn Robinson             |
| + Sean Patrick Collins       | * ^ Sofia Zahida Iqbal         | Dayn Edward Rothemeyer        |
| Robert Jerimiah Congdon      | * David Michael James          | +* Timothy Jameson Rowe       |
| +* ^ Caitlin Flynn Connell   | * ^ Jayme Lynn Keeling         | +* Rachele Elizabeth Ryan     |
| Savva Anthony Constantinou   | * Andrea E. King               | Shane Scarratt                |
| Anthony James DelBiondo      | * Sondilyn Lee LaCoursiere     | Luann Frances Shaw            |
| +* ^ Jessica Anne Dell       | * Sarah Katherine LeMotte      | Stephanie Elise Shay          |
| +* Melissa Jane Dess         | +* ^ Kate Maria Lennard        | Stephanie Marie Simiola       |
| +* Gonzalo Digenio           | +* Emma Ava Lo                 | Lauren Sisk                   |
| +* Catherine Marie Dodge     | * ^ Ryan Michael Looney        | +* Katharine Ann Skaar        |
| Sean Edward Donnelly         | * ^ Thor Champion Magnussen    | * ^ Michael Raymond Slezycski |
| Adam Collins Draayer         | Michael D. McCarthy, Jr.       | * ^ Matthew Reynold Stark     |
| +* Johnathan Grant Drakos    | +>* Matthew Jourdan McCawley   | ^ Brian Joseph Stearns        |
| +* Anne Noelle Dupuis        | +* Sara Joy McCollum           | +* Peter Finn Stumpf          |
| +* Paul John Egri III        | +* Kelly Nicole Meehan         | Chelsea Diane Taylor          |
| * Timothy Weldon Elwell      | Ashley Anne Mullen             | Clem Thomas                   |
| +* Marybeth Fafalla          | * Jessica Elizabeth Murtz      | Heather Anne Thompson         |
| Jared Russell Faircloth      | * ^ Jessica Nicole Naumowitz   | * ^ Brittany Leigh Turcotte   |
| Danielle Marie Farina        | +* ^ David Philip Neaton       | * Todd Rice Turcotte          |
| Stephanie Michelle Fialco    | + Laura Jean Neville           | +* ^ Elizabeth Marie Tyler    |
| Adam Edward Flemming         | James Patrick Nichols          | Christina Jean Vanderplas     |
| * ^ Matthew David Garland    | +* Maryanne Keum O'Brien       | Michael Paul Vizcaino         |
| * Nicholas David Gianfredi   | Vanessa Ruth Olsen             | Gregory Lawry Wilkman         |
| Robert Peel Gladwell         | James Joseph Paonessa          | +* Garrett David Wojcik       |
| + ^ Heather Katherine Green  | * ^ Bennett Christopher Pardue | * Jennifer Munying Yee        |
| + Sarah Frances Green        | + Kirin Elizabeth Peagler      | Emily Anne Zall               |
|                              |                                | Brian Christopher Zito        |

- + Members of the National Honor Society
- > Academic Letter Recipients
- \* CAPT Scholars
- ^ Connecticut Career Certificate Recipients

## Class Officers

|                      |                  |
|----------------------|------------------|
| President .....      | Caitlin Connell  |
| Vice President ..... | Paul Egri        |
| Secretary .....      | Melissa Dess     |
| Treasurer .....      | Marybeth Fafalla |



# Lyme-Old Lyme High School *(continued)*

## AWARDS & SCHOLARSHIPS

### MEMORIAL SCHOLARSHIPS

|  |  |
|--|--|
| JoAnn Bocian Memorial Scholarship .....                                  | Sean Cody, Bennett Pardue  |
| Everett "Chief" Burke Memorial Scholarship .....                         | David Neaton   |
| Scott Marsh Cory Memorial Scholarship.....                               | Maryanne O'Brien   |
| Diane Luke Getman Memorial Scholarship .....                             | Elizabeth Tyler  |
| Julie Goodman Memorial Scholarship .....                                 | Heather Green  |
| Robert C. and Marguerite C. Graves Memorial Scholarship .....            | Sean Collins, Caitlin Connell,<br>Catherine Dodge, Sean Donnelly, Anne Dupuis, Marybeth Fafalla,<br>Kate Lennard, Maryanne O'Brien, James Paonessa, Katharine Skaar, Elizabeth Tyler |
| Roger M. Grover Education Scholarship .....                              | Heather Green  |
| Ralph P. Kehoe Memorial Scholarship by Lyme-Old Lyme Lions Club .....    | Katharine Skaar  |
| Carl A. Kotzan, Sr. Technology Memorial Scholarship.....                 | Vanessa Olsen  |
| Lew Krause Memorial Scholarship by Lyme-Old Lyme Lions Club.....         | Kate Lennard   |
| Alan McLean Kyle Memorial Scholarship.....                               | Garrett Wojcik   |
| Richard LaCourciere Memorial Art Scholarship .....                       | Jessica Murtz  |
| Patricia Ann Langer Science Memorial Scholarship .....                   | Emma Lo  |
| Lymes' Chapter AARP #4413 Raleigh O'Brien Memorial Scholarship 2004..... | Matthew McCawley   |
| John McLaughlin Technology Memorial Scholarship.....                     | Jessica Holland  |
| Wallace F. Moore Memorial Scholarship.....                               | Laura Neville  |
| David Munday Memorial Scholarship.....                                   | Johnathan Drakos, Marybeth Fafalla   |
| Harold J. Nickerson Scholarship by Lyme-Old Lyme Lions Club.....         | Jesse Brockwell  |
| Mary Hubbard Noyes Nursing Memorial Scholarship.....                     | Kelly Meehan   |
| Carol L. Patterson Memorial Scholarship .....                            | Gonzalo Digenio  |
| Joan M. Pennella Scholar-Athlete Memorial Scholarship.....               | Emma Lo  |
| Dr. Frances C. Roach Women in Science Memorial Scholarship.....          | Sara McCollum  |
| Mildred Sanford Business Memorial Scholarship .....                      | Paul Egri  |
| Otto Storjohann Academic Improvement Memorial Scholarship.....           | Chad Bennett   |
| Robert Anthony Sullivan Memorial Scholarship.....                        | Sean Cody, Michael Slezeycki, Brian Stearns  |

### SCHOLARSHIPS

|  |  |
|--|--|
| Chubb Foundation .....   | Catherine Dodge  |
| Friends of Music Scholarship .....   | Laura Neville, Rachele Ryan, Katharine Skaar, Garrett Wojcik |
| W.E.S. Griswold Scholarship by MacCurdy-Salisbury .....                      | EmmaLo   |
| Lyme-Old Lyme Administrators Principal's Cup Scholarship.....                | Caitlin Connell  |
| Lyme-Old Lyme Junior Women's Club Scholarship.....                           | Sean Cody, Jessica Dell,<br>Matthew McCawley, Kirin Peagler  |
| Lymes' Youth Service Bureau LEAP Scholarship .....                           | Sarah Green, Maryanne O'Brien                                |
| Lymes' Youth Service Bureau Youth Advisory Council Scholarship.....          | Anne Dupuis, Kelly Meehan                                    |
| National Honor Society Scholarship .....                                     | Kelly Meehan   |
| Old Lyme Visiting Nurses' Association Scholarship.....                       | Norman Azoulay, Thor Magnussen                               |
| Old Saybrook Rotary Club Vocational Scholarship .....                        | Catherine Dodge  |
| Pfizer Math and Science Scholarship .....                                    | Ryan Patrick Quinn, Matthew Rice                             |
| Pythagoras Lodge #45 of Old Lyme Ancient Free & Accepted Masons' Award ..... | Emma Lo  |
| Regional School District 18 Teachers' Association Scholarship .....          | Paul Egri, Michael Slezeyki                                  |
| Simon Youth Foundation Community Scholarship .....                           | Kate Lennard   |
| Westbrook Emblem Scholastic Award Westbrook Emblem Club #535.....            | Garrett Wojcik   |
| Woman's Exchange of Old Lyme Scholarship .....                               | Maryanne O'Brien   |
| University of Connecticut Achievement Scholarship .....                      | Ryan Patrick Quinn   |

### MEMORIAL AWARDS FOR EXCELLENCE

|   |                            |
|---|----------------------------|
| Nathaniel L. Sheffield Accounting Award ..... | Lauren Sisk                |
| Sidney Stringer Physical Education Award..... | Heather Heye, Timothy Rowe |
| Roselyn Taylor Memorial Art Award .....       | Maureen Hautaniemi         |
| Tony J. Vasiloff Memorial Art Award.....      | Abby Hahn                  |

# **Lyme-Old Lyme High School** *(continued)*

---

## **AWARDS BY ASSOCIATIONS AND GOVERNMENTS**

|  |  |
|--|--|
| AHEPA 250 History and Government Award.....  | Katharine Skaar  |
| American Chemical Society.....   | Emma Lo, Garrett Wojcik  |
| 2003 Eugene Atwood Award.....  | Matthew Rice   |
| Alice Burbank English Award.....   | Catherine Dodge  |
| CAPSS Superintendent's Recognition Award/<br>CABE Superintendent Leadership Award..... | Jesse Brockwell, Caitlin Connell   |
| CAS CAIAC Scholar Art Award.....   | Matthew Rice, Catherine Dodge  |
| CIAC Scholar-Athlete Award.....  | Sean Collins, Emma Lo  |
| Congressional Certificate of Merit.....  | Sara McCollum  |
| Connecticut Society of Certified Public Accountants.....                               | Matthew Stark  |
| Connecticut Society of the Sons of the American Revolution.....                        | Johnathan Drakos   |
| Dan Moore Social Studies Award.....  | Anne Dupuis  |
| Department of the Air Force.....   | Emma Lo  |
| Elias J. Hage History/Economics Award.....   | Andy Betz  |
| Lyme-Old Lyme High School Perfect Attendance Award.....                                | Brendan Atkins   |
| Lyme Republican Town Committee.....  | Sarah Green, Nathan Hallman,<br>Elana Hapis, Heather Heye, Elizabeth Tyler |
| New Haven Register University of New Haven "Youth of the Year".....                    | Emma Lo  |
| New London Maritime Society, Inc. Reid MacLuggage Black History Award.....             | Sean Cody  |
| Old Lyme American Legion Post 41 Award.....  | Sara McCollum  |
| Old Lyme Grange Service Award.....   | Melissa Dess   |
| Old Lyme Players' Award.....   | Catherine Dodge  |
| Shoreline Alliance for the Arts, 3rd Place, Ceramics.....                              | David James  |
| State Scholastic Art Award, Honorable Mention, Pastel Drawing.....                     | Jessica Murtz  |
| Town of Old Lyme Government.....   | Heather Heye   |
| United States Marine Corps.....  | Matthew Rice   |

## **NATIONAL MERIT RECOGNITION STUDENTS**

Emily Zall, Finalist  
Emma Lo, Commended          Matthew Rice, Commended

## **REGIONAL SCHOOL DISTRICT EIGHTEEN BOARD OF EDUCATION**

Ms. Lynn G. Fairfield-Sonn, Ms. Karen Conniff, Ms. Susan Fogliano, Mr. Russell Gomes, Mr. Daniel Hagan,  
Ms. Priscilla Hammond, Ms. Nanette Salvino, Ms. Mary Stone, Dr. Roderick White

## **ADMINISTRATION**

Mr. David Klein, Superintendent  
Ms. Jan Guarino-Rhone, Principal  
Mr. Robert Angeli, Assistant Principal

## **CLASS ADVISORS**

Lisa Gillette, Head Advisor  
Sharon Didato, Al Honer, Leslie O'Connor, Bill Rayder, Robert Roach, Linda Tuzzio, Charles Wolfe

## **FACULTY**

Nicole Breault, Jennifer Burke, John Byrne, Deborah Caldwell, Bruce Chandler, Carolyn Cimino,  
Dennis Costello, Katherine Devlin, William Derry, Sharon Didato, Karen Duhamel, Brett Eckhart,  
Glenn Elliott, Marlene Estabrooks, Marsha Folger, Eileen Gannon, Lisa Gillette, Jonathan Goss,  
Roger Haynes, Joanne Hedwall, Alan Honer, Louise Jackson, Kirk Kaczor, Marci Kania, Barth Keck,  
Dawn Kelley, Katia Kingston, Jeanne Manfredi, Elizabeth Matis, John McGannon, Sheila McTigue,  
Leslie O'Connor, Barbara O'Leary, Kristine Pekar, John Pfeiffer, William Rayder, Jill Ressler, Robert Roach,  
Colleen Rodriguez, Mary Beth Schreindorfer, Jacquelyn Sullivan, Constance Swartz, Leslie Traver,  
Linda Tuzzio, Patricia Watt, Jacob Wilson, Charles Wolfe, John Woodman

## **CLASS MARSHALS**

Joseph Ouellette, Kimberly Russell

---

## Lymes' VFW Post 1467

Bob Roser  
*Advocate*

**L**ymes' Veterans of Foreign Wars Post is made up of men and women who have served our country honorably overseas in time of war.

Our local Post has over one hundred members, thirty of whom participate in an assortment of projects in the Lyme-Old Lyme area. Sometimes called the "Lymes' History Channel," former combat veterans work to fulfill projects aimed at our community. In addition to town service and updating all veterans on current VA programs and benefits, the goal of the Post is to provide patriotic, historical, educational events to maintain the institution of our American freedom.

It is well to note in this *Look At Us Now* edition that Lymes' VFW just celebrated its tenth anniversary of comradeship. From humble beginnings the Post has assembled action teams that over the decade have won state and organization awards for volunteer excellence.

This past year some thirty-four service projects were completed with a *record 5,339 volunteer hours* contributed. In addition to the Middle School Youth Essay contest, various

volunteer efforts included administering ten American Red Cross blood drives, commitments to Habitat construction and the VFW Connecticut Home, VA Hospital visitations in New Haven and Rocky Hill, local prison work, Little League sponsorship, and many veteran-related charities. The Post also participates in a burial detail Honor Guard designed to pay closing tribute to departed veterans. Families can request this meaningful service when making local funeral arrangements.

The annual November Veteran's Day "Buddy Poppy" Program, which is conducted for our Post Relief Fund, continues to help several needy veterans and related relief activities. Carrying the slogan "*we don't leave our wounded behind,*" the Post continues to thank all residents of Lyme and Old Lyme for their contributions to this annual appeal. Dinner meetings are scheduled the fourth Monday of the month at the Lymes' Senior Center. For membership information and the opportunity to join in the Veterans of Foreign Wars comradeship and service, call Commander Andy Brennan at 434-4207.

---

## Lymes' Youth Service Bureau

Deborah Gray, *Director*  
Sue Frost, *Chairman*

**T**he Lymes' Youth Service Bureau (LYSB) has been serving the towns of Lyme and Old Lyme since 1978. We are deeply grateful to the community for their generous support of our annual fundraising campaign, which comprises a large portion of our operating budget.

Our innovative programs target children of all ages and their families. In the past year we provided educational activities; free counseling; employment/training classes; recreational, cultural, parenting, and family activities; and over 15,000 hours of positive youth development that involved our youth performing voluntary community service, tutoring, and mentoring. Our high- and

middle-schoolers are positive role models for the younger students, and we aim to provide a supportive and nurturing environment for our children as they progress from toddlers to young adults.

LYSB's active board of committed volunteers continues a strategic planning process to identify the changing needs of our community in order to ensure that our programming remains vital and relevant.

Please visit our website for a complete list of our programs: [www.lysb.org](http://www.lysb.org) <<http://www.lysb.org/>>

# MacCurdy Salisbury Educational Foundation, Inc.

---

Rowland Ballek  
*President*

The MacCurdy Salisbury Educational Foundation has been supporting educational activities in Old Lyme for over 110 years. Beginning in the 1930s, foundation activity was almost exclusively directed to giving grants for educational purposes to Old Lyme students who wished to continue their education after graduating from high school. In 1973, the Brevillier fund was added for the benefit of students from the Town of Lyme.

Five years ago, the foundation applied to the Internal Revenue Service to change its status from a private nonprofit foundation to a public nonprofit foundation. After a five-year probationary period, this request was formally accepted in 2004, and we are now a public foundation. Forty individuals representing Old Lyme, Lyme, and Regional School District 18 serve as members of the foundation, and they elect officers and a Board of Directors who manage the daily affairs of the foundation. At the September 2003 annual meeting three new members were elected; they are Judith Read and Dr. Greg Hack from Old Lyme and Norman Caine from Lyme.

For the 2003-2004 school year, 97 students from Lyme and Old Lyme were granted a total of \$171,000 from the foundation. For the upcoming 2004-2005 school year, 94 students will receive a total of \$161,000 from the foundation. All high school graduates, even those who attend schools out of town, who have maintained a permanent residence in Lyme or Old Lyme for at least two years are eligible to apply for a MacCurdy Salisbury grant. Applications and instruction are available at the Lyme-Old Lyme High School Guidance Office. Applications must be submitted by April 30<sup>th</sup> for the fall semester and by November 15<sup>th</sup> for the second semester.

In the spring of 2004, the foundation completed the sale of its Town Woods Road property to the State of Connecticut. The 180-acre parcel has frontage on Town Woods Road across the street from the new athletic fields and High Hopes. This frontage extends into the Town of Lyme and includes a small amount of frontage on Rogers Lake. The state paid \$620,000 for the parcel and plans to keep it in their open space program. The towns of Lyme and Old Lyme each donated \$25,000 to the foundation in appreciation for assuring that this important property would forever remain free from development. The Town of Old Lyme also helped by transferring a narrow strip of land on Town Woods Road to the foundation to help straighten out the boundary line and to help eliminate potential boundary disputes that had to be resolved after the century-old boundaries were surveyed. The foundation expressed its appreciation for the help First Selectman Tim Griswold provided with the land transfer from the town and also to Attorney Tom McGarry for his tireless efforts researching the boundaries and securing a final survey acceptable to the state.

The proceeds from the property sale were a great help to our endowment fund. However, it is the goal of foundation members to build on the endowment so that the educational grants can keep pace with the ever-rising cost of higher education and the increasing number of applicants seeking financial aid. Residents can help by considering outright gifts, setting up a planned giving program, starting a charitable remainder trust, or arranging for a bequest. The MacCurdy Salisbury Educational Foundation is a unique feature of this community and, with our support, it will continue to help local students achieve their educational goals.

---

## Municipal Agent for the Elderly

Don Tapper  
Municipal Agent

**A**s Municipal Agent for the Elderly, I am always available to give advice and direction to the elderly and their families on all topics concerning senior issues. Leave a message on my home phone, 434-5334, and I will respond as quickly as possible.

We are fortunate to have an exceptional Senior Center/ Visiting Nurse Office located on Town Woods Road. I would encourage all seniors to join and participate in their

programs. Center and Social Services director, Kay Mannetho, along with Visiting Nurse, Linda Camarra, do outstanding work helping with all facets of senior problems.

Senior subsidized housing is available at Ryefield Manor and Lymewood, but applications must be made as there are waiting lists. Please call Ryefield at 434-0526 and Lymewood at 434-2120 for more information.

---

## Old Lyme Affordable Housing Corporation

Les Reynolds  
Executive Director

**D**uring the past year, OLAH continued its search for more properties – we are organized and funded to build or rehab homes, **one home at a time**, whenever usable property comes into our possession. We always have candidates but we currently have no property. There is a pressing need, therefore, for gifts in Old Lyme of buildable property or small, older houses for rehabbing.

OLAH helps citizens of Old Lyme (current or former residents, or those working in town) get their first houses. We build or acquire houses and sell them to first-time home-buyers with a household income below 80% of the region's median income. The houses are owned by the occupants, while OLAH holds the land in trust, keeping the house forever affordable. Three families now own their first houses, on land held in trust by OLAH in the Flat Rock and Boggy Hole areas, via Essex Savings Bank's mortgages.

Our **Building Community Wealth (BCW) Fund**, when fully funded, will allow us – using our own cash – to act immediately to buy a “handyman’s special” on its own lot, then take the time to set up volunteer work parties (our churches have the manpower), solicit gifts-in-kind from merchants, and so reduce the total cost of each house dramatically. Replenished from buyers’ mortgage money, this revolving fund will benefit many families through the

years. By June 2004 we had raised \$40,000 of our \$200,000 goal for BCW. Of course, on gifted land we can immediately put up and sell a new house (no borrowing from BCW).

All citizens of Old Lyme can thus add to our overall “Community Wealth” if they:

- Make a tax-deductible gift of money, houses, or land at any time
- Tell us of potential land donors or modest houses in need of a fix-up
- Tell us about any Old Lyme family meeting our criteria for candidates
- Get personally involved, particularly in fund raising, publicity, or land acquisition.

OLAH is an independent 501(c)(3) community-based corporation, created in 1993 by the Lyme/Old Lyme Council of Churches and its congregations to speed up Old Lyme’s development of truly affordable housing. **We do it “one home at a time.”**

OLAH contacts (all volunteers)

|                    |                 |
|--------------------|-----------------|
| Executive Director | Les Reynolds    |
| Secretary          | Bunt Karter     |
| Vice President     | David Stanland  |
| Resident Selection | Jean Read       |
| Financial Sec’y    | Barbara Traskos |
| Development        | Peter Manley    |

Write OLAH at P.O. Box 1044 Old Lyme or call Les Reynolds, 860-434-3922, or Peter Manley, 860-434-6040.

# Old Lyme Conservation Trust Inc.

---

Michael J. Kiernan  
*President*

The Old Lyme Conservation Trust (OLCT) continued its efforts to help protect open space in town while also expanding opportunities for hiking, bird watching, and other forms of passive recreation. As of June 30th, OLCT protects approximately 700 acres of open space in Old Lyme, consisting primarily of natural forest in various stages of regeneration, salt marsh, wetlands, and open fields. These lands, which are held for the public benefit, will never be developed and are destined to remain in their natural state in perpetuity, providing important habitat to wildlife and protection of water sources, as well as outdoor enjoyment to current and future generations. All properties directly owned by OLCT are open to the public, though certain areas comprise fragile habitat that is best left undisturbed, for example, areas for nesting of wildlife, protection of endangered plants, etc. The trust holds several easements on properties that are privately owned. While these are not open to the public, they provide important scenic, habitat, and other public benefits.

This year, an exceptionally beautiful preserve was donated to OLCT by the Lohmann-Twining-Buck families. On a recent visit to this rugged parcel, which overlooks the upper portion of the Lieutenant River, a large eagle was spotted soaring overhead. Anyone interested in visiting this and other OLCT holdings will find the most interesting preserves listed on our OLCT website ([www.old-lymeconservtrust.org](http://www.old-lymeconservtrust.org)), along with locations and suggested parking.

In an effort to raise awareness of where these parcels are located and to make them more accessible, the trust has been posting small signs along the roadside and building hiking trails where appropriate. Please look for these and feel free to get out walk on the property. Please note, however, that ATVs (all terrain vehicles) are not allowed on any OLCT preserve, as they tend to compact the soils and damage vegetation and fragile habitat. OLCT is fortunate to be associated with the Lyme-Old Lyme High School "Green Crew," a group of young conservationists who work with the trust one Sunday each month to rebuild trails, post signs, pick up trash, and cut back invasive vegetation, among other things. Finally, the trust awards the Kinsley "Bud" Twining Scholarship each year to a promising young college student from Old Lyme who is pursuing a degree in environmental studies.

As Old Lyme becomes increasingly developed, OLCT is seeking to expand protected open space in town, working on its own and in partnership with others. Information on the types of conservation options available to landowners is readily available from the trust (for example, easement, donation, bargain sale, etc.), and we welcome the opportunity to talk with anyone further about these. OLCT also welcomes anyone interested to join our committees and become actively involved with the trust. We work on a volunteer basis and are open to all. Please do contact us for more information and be sure to visit your OLCT preserves!



*Lyme-Old Lyme Middle School gymnasium*



*The Mile Creek School cafeteria now has a stage (left), with the serving area in the rear.*

## Old Lyme Animal Shelter & Animal Control Dept.

---

Martha Rumskas  
*Animal Control Officer*

The shelter was busy again this year. We rescued three feral cat colonies and were able to adopt out most of the cats. We also helped Pet Connections with some cats that they had rescued in Old Lyme. Our new cat area has been a blessing and we are all grateful that we have the space to house all these abandoned animals. Everyone that visits the shelter is very impressed with the cheerful atmosphere. They feel Old Lyme has a wonderful facility and the staff do, too!

This year we rescued 103 animals from the streets of Old Lyme. We returned 49 of these to their owners and adopted 47 to new homes. The other 7 were carried over into the next fiscal year. There were 12 dog bites and 268 complaints from residents.

Many people still have to be reminded that dogs are not allowed to roam off their property and are not to be barking and disturbing their neighbors. Aggressive behavior towards people or other animals is absolutely not tolerated, and

all dog bites are to be reported to the Animal Control Officer. State statute requires that the dogs that bite have to be quarantined.

And, of course, all dogs have to be licensed at the town hall. This seems to be a problem for some people, but they need to realize that there are many important reasons why this has to be done other than the fact that it is a state law.

Residents of Old Lyme who need help with their pets can feel free to call us about any problem. We will help, and we have a network of other people to call on. One of the situations we run into, and we can't stress this enough, is that if you can no longer take care of your pet, please call us and we will either take it into the shelter or help you find a new home. We find many animals roaming that we know have been "dumped out"!

We are located at 3 Machnik Drive off of Hatchet Hill Road, which is off of Four Mile River Road near exit 71. Please call us at (860) 434-3047.

## Old Lyme Open Space Committee

---

George James  
*Chairman*

The Old Lyme Open Space Committee has found it more difficult to acquire additional open space for the town because of the sharp increase in prices for land and because of limited funds in the Open Space Account. The committee has focused its latest efforts on making the properties that have been acquired available to the public. We have cleared trails on the Bartholomew, Ames, and Champlain Farm properties. We have marked the trails, placed signs identifying the properties and the rules governing their use, created an open space web site as part of the town's web site, worked closely with the Old Lyme Conservation Trust and the Nature

Conservancy, and urged people to use the trails through scheduled walks. Shirley Talcott arranged for several nature walks and talks by local experts. A group of high school volunteers known as the "Green Crew" have performed essential management activities such as clearing invasive plants, removing brush, working on trails, and the like. They did an excellent job of clearing the area around the massive oak on the northern portion of Champlain Farm located behind the Old Lyme Inn. Much remains to be done, and we do plan to identify additional parcels of open space for the town to acquire to make sure that the rural quality of life in Old Lyme is preserved.

# Old Lyme Fire Department

---

C. Ellis Jewett  
Secretary

**E**ighty-one years ago the Old Lyme Fire Department was formed by citizens of our town to offer protection against the ravages of fire. A single fire engine was housed in the basement of Memorial Town Hall.

“Look at Us Now!” The department now operates three fire stations located on Lyme Street, Cross Lane, and Boughton Road. Fire apparatus consists of four engine-tanks, one rescue unit, two tankers, one forestry unit, and two inflatable rescue boats. An ongoing in-house training program is conducted by the training officers of the department. Outside instructors are employed when necessary, and members are encouraged to attend Federal, state, and regional training sessions.

During the past year the Old Lyme Fire Department answered 293 calls for assistance. Nearly 3000 firefighter hours were logged in emergency duty. In addition, Old Lyme firefighters spent over 1000 hours in training. Our department must be prepared to meet the ever-changing challenges of structural fires, rescue emergencies, brush and forest fires, storm-related emergencies, and hazardous material incidents. Automatic fire-alarm activations and automobile accidents with injuries still account for more than 50 percent of the department responses.

It is with great pride that the department placed in service a new 2004 Pierce Saber attack engine that operates out of the Lyme Street station. *(See photo, facing page.)* Nearly two years of volunteer committee work went into developing specifications and purchasing this new apparatus. Continuing town support of the apparatus replacement plan is essential and to be commended.

Annual funding, provided by the Town of Old Lyme, is used for the training of personnel and to purchase and maintain fire department apparatus and equipment. The upgrading, modernization, and maintenance of fire department equipment is never ending. Equipping firefighters to safely face the challenges of their duties, adhering to the

mandates for equipment standards, and complying with maintenance and testing schedules are costly expenditures of our department.

Old Lyme Fire Department officers and personnel are actively involved in providing approvals and suggestions for the many development, expansion, and renovation projects in our town. Officers work with various boards and commissions to assure adequate fire protection.

Our department continues to be all volunteer. Our members are taxpayers and strive for the most efficient operation of the fire department. In this effort, town funding is supplemented with funds raised through donations and the Fireman’s Fund campaign.

New dedicated volunteers are always needed and new members are welcome. Please consider offering your services. Visit any of the three fire stations and find out how you can assist. Department members meet on Wednesday evenings for scheduled training sessions, work nights, and monthly business meetings.

The Old Lyme Fire Department is administered by the following elected officers:

## LINE OFFICERS

|                        |   |
|------------------------|---|
| Chief                  | Robert McCarthy                                   |
| Deputy Chief           | David Jewett                                      |
| First Assistant Chief  | Thomas Rozanski                                   |
| Second Assistant Chief | Brian Dow   |
| Captains               | Jeffrey Harris<br>Thomas Swaney<br>Kenneth Swaney |
| Lieutenants            | Keith Bayer<br>Glenn Kathe<br>Brian Phanuef       |

## EXECUTIVE OFFICERS

|                  |                 |
|------------------|-----------------|
| President        | Arthur Beebe    |
| Secretary        | C. Ellis Jewett |
| Treasurer        | Robert Cashman  |
| Purchasing Agent | Harry Smith     |
| Chaplain         | Mervin Roberts  |
| Steward          | John McCarthy   |



# Old Lyme Harbor Management Commission

Norman S. Hewitt  
*Chairman*

The year 2003-2004 was a year of consolidation of gains and planning for the future for the Old Lyme Harbor Management Commission (OLHMC). The Dinghy Dock, launched in May 2002, has been used by canoers and kayakers, with anglers fishing from the end of it! We encourage the use of the dock, and the cove in which it is located, as a venue for small-craft training and safety demonstrations.

Our anti-litter signage is effective in that there has been a remarkable absence of trash on the site. The two picnic tables have been used by lunchtime visitors.

The passage this spring of PL 04-183 by the General Assembly, which affects the towns of the Lower Connecticut River, promises to give each Harbor Management Commission uniform standards and criteria to evaluate size, location, and suitability of new dock applications. Essex and Old Saybrook have been designated the lead commissions to develop the implementation plan. The Harbor Management Commissions of Old Lyme and Chester are collaborating, along with the Connecticut River Estuary Regional Planning Agency (CRERPA). No funding is available from DEP for developing the plan. We anticipate that with volunteer staff only, the completion may lag behind targeted dates.

The Old Lyme Harbor Management Commission is an active member of the Connecticut Harbor Management Association, an organization composed of HMCs from all over the state, harbormasters, marine trade representatives, and marine scientists. The experiences we share with members of commissions from Fairfield County east to the Rhode Island border are of considerable help in shaping our own programs. The guest speaker at the annual dinner meeting this year was Attorney General Richard Blumenthal. The major thrust of his talk dealt with dredging. He also discussed the problems he faces with New York State officials involving Long Island Sound issues.

The Connecticut Long Island Sound License Plate fund continues to make grants for eligible projects that fall in one of four categories stated in the regulations. Our OLHMC is currently studying an opportunity that would improve a town-owned Connecticut River site and improve access to the mooring field.

Finally, we wish to acknowledge the six years of service on OLHMC by Mark Yuknat. Captain Mark has been unable to attend meetings on a regular basis because he has started up his charter boat venture. We all wish him the best of luck and look forward to seeing out on the sound next season.



*Old Lyme Fire Department's new 2004 Pierce Saber attack engine*

# Old Lyme Parks and Recreation

---

**Don Bugbee**  
*Director*

The Parks and Recreation Department provides a variety of programs and services for the residents and the summer visitors in Old Lyme. The office is located in the lower level of the Memorial Town Hall and can be reached by calling 434-1605, extension 235. The E-mail address is [olparkrec@snet.net](mailto:olparkrec@snet.net), and there is a Parks and Recreation web page on the Town of Old Lyme's Website, [www.oldlyme-ct.gov](http://www.oldlyme-ct.gov).

The Parks and Recreation Commission, made up of seven residents, usually meets on the first Thursday of each month at 7:30 p.m. at the town hall. Anyone interested in participating as a commission member should contact the chairperson and the Selectman's Office. All are welcome to attend the monthly meetings.

The fall of 2004 marked the long-awaited opening of our new facilities at Town Woods Park. There are presently three soccer/lacrosse fields at the park. The Parks and Recreation Soccer teams from Lyme and Old Lyme and the Lyme/Old Lyme Soccer Club teams played at the park well into November. District 18 middle school and high school boys' and girls' teams played some games there as well. It is anticipated that the building will be ready for use and will open in the spring of 2005. There are also continued efforts to complete the final phase of the park, which at this time includes two Little League-size baseball/softball fields. Many people worked tirelessly for many years

to get the park from concept to operation. Their efforts are to be commended. The park is beautiful and we anticipate many years of use through the cooperation of all involved.

During the summer months we provide a daily staff of lifeguards and parking lot attendants for our facilities at White Sand Beach and Hain's Park at Rogers Lake. We also staff the town-owned parking lot at Sound View Beach, which becomes one of the busiest spots in town. We maintain the Little League baseball and softball fields and the tennis courts and basketball courts at Cross Lane Park.

The programs we currently offer for our youth include a six-week summer day camp, basketball camps, tennis sessions, the Major League Soccer Camp, a baseball clinic, spring lacrosse, fall soccer, winter basketball, and fall flag football. Adult programs currently include yoga and basketball. Aerobics and weightlifting/exercise are being considered, pending availability of instructors and space.

As always, I would like to thank all of the Parks and Recreation employees, commission members, the Public Works Department, the Selectmen, the Board of Finance, and the town employees for the efforts they contribute to our programs. Also and in particular, thanks goes to the dedicated volunteers who continue to give up their time for the benefit of others in our community. Your efforts are essential to many of our Parks and Recreation programs and they are appreciated.



*The high school playing fields have all been redone. The district is in a three-year program to bring the fields back to good condition; with club and Parks and Recreation teams now able to play at Town Woods Park, these fields will be used by only middle- and high-school teams. Says John Rhodes, Director of Facilities, "Before, EVERYTHING was here, and grass didn't have a chance!"*



*Town Woods Park has parking for approximately 250, as seen from the new building looking toward the senior center.*

## Old Lyme Pension Committee

---

**Oliver Patrell**  
*Acting Chairman*

**A**s we “Look at Us Now,” part of the focus is on town employees who contribute to “the Look” in Old Lyme on a daily basis and who have played an important role in the management and support of the playing fields project.

The Town Pension Plan provides a defined contribution of 8 percent of salary to all employees over the age of 21 who have been employed for more than 1 year. Currently we have 40 active employees and 7 who have retired or left employment. Once enrolled, members can decide whether to invest in a variety of Mutual Funds or in a fixed account with guaranteed minimum interest. Approximately 40 percent of our fund is in Mutual Funds and the remainder is in the fixed account with minimum interest of 3 percent.

Also available is a savings plan called 457A that is the municipal equivalent of 401K

available to employees of private business. While we do not have a high percentage using the plan, those using it are saving aggressively.

Many of our employees are long term and have accumulated significant values in their individual accounts that will be available to them upon retirement in either a lump sum or an annuity.

While the new Savings/Retirement Plan for our volunteer firemen is not part of our charter, the Town Pension Committee is pleased to have made a contribution to its development; it is now in place and working well.

John A. Bysko CFP,CPA  
Bud Canaday  
Wayne Devoe, Board of Finance  
Kathy Holland, Employee Representative  
Doris Johnson, Secretary

## Old Lyme Shellfish Commission

---

**Mervin F. Roberts**, *Chairman*  
**John D. Seckla**, *Treasurer*  
**David W. Redfield**, *Secretary*

**T**he Shellfish Commission is one of Old Lyme’s oldest continuing organizations. In the past, the shellfish beds that fall within the town boundaries were a valuable source of protein, a cash asset, and a recreational treasure.

Unfortunately the increase in population density over time has resulted in a dwindling resource. At the present time, all of the oyster and clam beds in the Connecticut River within our town are closed due to pollution that comes not from our community, but from upriver, principally due to sewage treatment.

The commission’s duties, at this time,

are really limited to adhering to the state prohibitions, which close practically all of Old Lyme’s beds. The one area that could be considered “conditionally usable” unfortunately has too few clams to be viable.

The state monitors and surveys the shellfish areas continually. There are more and more groups striving to restore our estuary to a cleaner and better place and, we hope, a productive asset for our citizens.

The Shellfish Commission uses no taxpayer funds. We meet when we have business to conduct. Meetings are advertised, and all are welcome to attend.

# Old Lyme Phoebe Griffin Noyes Library

---

Mary Fiorelli  
*Director*

The mission of the Old Lyme Phoebe Griffin Noyes Library is to:

- Serve as a center of information for the Old Lyme community.

- Foster the cultural enhancement and development of an informed and knowledgeable community of Old Lyme inhabitants.

In pursuit of this mission the library will:

- Assemble, organize, preserve, and administer collections of books and other educational and recreational materials and resources.

- Provide free and convenient access to these collections, further enhanced by a trained professional and support staff.

- Actively encourage the use of library resources, services, and programs by all Old Lyme residents and property owners.

Our patrons rely on us for information of every type imaginable, and our statistics for FY2003-2004 strongly demonstrate how important the library is to them:

As of June 30, 2003 our records show that most town residents are registered for library cards with 5,264 adults and 1,575 children listed. We have an additional 3,274 patrons from other towns who have registered for interlibrary loan or who travel to use our facility. Our circulation of library materials reached 78,356 items checked out by all users, both resident and nonresident. The Community Room was used 238 times by local organizations, clubs, nonprofit and for-profit groups.

We offered a combined total of 217 programs for adults and children attended by 3,082 individuals. Outstanding programs for all age groups featured many talented performers,

storytellers, authors, and educators. Mystery writer David Handler, undersea explorer and scientist Robert Ballard, ecologist Judy Preston, artist/photographer Judy Friday, theatrical performers such as the Hampstead Players, musical storyteller Mary Jo Maichack, and educators from the Science Epicenter informed and delighted audiences. The first year of a storytelling outreach program to the Old Lyme Learning Center day camp was so successful that our staff was invited back during the summer of 2004.

The online catalog still serves as the major resource for all patrons before the library staff uses the Internet, databases, or other services. Our system tallied 3,940 logins from home by patrons who were searching, placing holds, and renewing items online, creating lists of titles or linking to other resources on the Internet. The online catalog is a powerful tool that can be used from your home or office computer at [www.oldlyme.lionine.org](http://www.oldlyme.lionine.org) and by clicking on the magnifying glass symbol.

Our public computers are busy hubs of activity where people conduct research, write resumes and reports, access the Internet, or check their e-mail, resulting in nearly 5,000 visits during the year. Our interlibrary loan transactions totaled over 10,250, and access to IConn.org, the free statewide database service, was just shy of 1,000 logins from the library alone.

We think these figures represent a town population who know, use, and value the fact that our doors are open to everyone, where the information is free and friendly assistance from our staff is only a step away at one of our public desks.

# Old Lyme South End Volunteer Ambulance Association, Inc.

Jane Bysko  
*President*

**F**ifty-five years ago we began as the South End Ambulance Service administered by the Old Lyme South End Fire Department (SEFD) Ambulance Committee. With funds borrowed from the SEFD, a 1938 LaSalle ambulance was purchased from the Jordan Fire Department in Waterford, Connecticut and used to provide medical and emergency transportation to and from hospitals and other medical facilities. The Old Lyme South End Volunteer Ambulance Association, Inc. has been an independent organization since 1980. We exist to provide emergency medical services to the Town of Old Lyme and mutual aid to other area towns when requested. We operate two ambulances—a primary unit from the Cross Lane Station and a secondary unit from the Boughton Road Station.

Thanks to the Old Lyme community's generosity, we were able to purchase and equip a 2000 Chevrolet Tahoe to be utilized as a first-responder vehicle. The vehicle is outfitted with emergency medical equipment and is intended to be parked at the home of an association member to allow rapid response to the scene of an emergency. The intention is to shorten response time and get first-responder aid to a patient as soon as possible.

The association is presently soliciting proposals from manufacturers for an ambulance

to replace our 1995-model Road Rescue. As ambulances are seldom purchased from assembly-line models, our "truck" committee is working with various representatives to reach agreement on an ambulance that will meet our specifications for delivery in 2005. The new ambulance, per usual, will be purchased with association funds and thus will not impact the Town of Old Lyme budget.

We are always in need of new members who are willing to become trained and certified as Emergency Medical Technicians or Medical Response Technicians. We provide course-cost reimbursement to persons who successfully complete the required course of instruction and actively affiliate with the Ambulance Association. If you are interested in volunteering or have any questions, please contact any Ambulance Association member.

Our officers are as follows:

## **Executive Officers**

|                |                  |
|----------------|------------------|
| President      | Jane L. Bysko    |
| Vice President | Tom Bump         |
| Secretary      | Sharon Swaney    |
| Treasurer      | Robert P. Knauff |

## **Operations Officers**

|                     |                     |
|---------------------|---------------------|
| Chief of Operations | Barbara R. McCarthy |
| Lieutenant          | John Bysko, Jr.     |
| Training Officer    | David DeBiondo      |
| Engineer            | Norman Emerson      |



*Science classroom, Middle School*



*View from inside the Middle School library*

# Old Lyme Tree Commission

---

Joanne C. DiCamillo  
*Chairman*

The Board of Selectmen formed the Tree Commission in January 2001. Its purpose was to assist the town's Tree Warden in providing care, protection, and maintenance of the trees growing on town property.

A maintenance plan was developed at that time. Considerable progress has been made in the past three years to achieve its initial goals. All of the trees on the village streets, the town greens, and Hains Park at Rogers Lake have been trimmed. Several new trees of mixed species have been planted. Hazardous trees have been removed. Protecting our existing elms with an annual disease prevention program was initiated. Notably, a long-range roadside trimming project was completed in the spring of this year. Seven roads have been improved with better visibility and safety conditions because trees were trimmed up and away from the sight lines. Brush was cleared and choking vines, which impact the life expectancy of trees, were removed. Additional roads are in need of improvement and work will begin later this year.

A ceremony in memory of the victims of September 11 was held at the Police Station, where the commission planted a memorial tree. A plaque with an appropriate inscription is being mounted on a granite stone. It will become a permanent addition to the site.

Commission members organized an educational display in the library in celebration of Arbor Day. Brochures describing pruning,

planting, mulching, and managing insect and disease problems were available to the community.

A permit application is available at the town hall for all residents and business owners who wish to trim, cut, remove, or plant trees on town property. An application must be submitted to and approved by the tree warden before beginning work. A copy of the Tree Ordinance outlining this procedure is available in the town clerk's office.

The Tree Commission members are a group of "hands-on" volunteers. We maintain the young trees on Lyme Street and McCurdy and Ferry Roads by weeding and mulching and closely monitor their growth and health. We are very pleased that the transplanting of the umbrella pines from the front of Town Hall to Lyme Academy was accomplished successfully. The trees appear to be adjusting to their new site quite well. Their survival will be determined by favorable weather conditions including adequate moisture.

Commission members have served as consultants to the Town Woods Playground Committee by suggesting types of shrubs and trees that can be incorporated into the proposed playscape.

The Tree Commission meetings are held on the third Thursday of the month at 4:00 p.m. in Town Hall. Community members are always welcome. We thank you for your support of our efforts.



*The new middle school art room, formerly shop space, is spacious and has great light.*

# Old Lyme Visiting Nurse Association, Inc.

---

Muriel Drugan  
*Executive Director*

From the corner nurse's office in the Lymes' Senior Center, Town Nurse Linda Camarra, R.N., has a panoramic view of the spacious new athletic fields. Quite a change from the row upon row of cornstalks that once filled the landscape. Each year seems to bring more and more people to the center to partake in the services and activities offered there. Last year, during her office hours from noon to 1 p.m. Monday through Friday, the nurse saw a total of 1,115 persons. The majority of these visits were for blood-pressure reading check-ups, though allergy, B12, and immunization injections were also done, as were wound dressing checks and changes. Linda also made a total of 600 house calls to those who are homebound and unable to travel to her office.

A number of town resident volunteers who make up our dedicated Board of Directors and Associates work under the direction of the town nurse at several clinics throughout the year and arrange, organize, and staff a number of other clinics and services. Without the efforts and hours that our volunteers so generously give, the association would not be able to accomplish so much of the work that it does. At our outdoor blood-pressure clinics held in June and September a total of 68 persons were screened. The yearly blood-pressure clinic at Lyme-Old Lyme High School saw 154 young people take advantage of this service. The students were also educated by presentations on the health effects of the sun on skin, the nutrition facts of fast foods, and the possible dangers of excessive weight-lifting. The 2003 Flu Clinic immunization program dispensed 670 shots to clinic participants, the homebound, town employees, police, and volunteer ambulance and fire personnel. Pneumonia inoculations were given to 13 persons who were 65 or older and who had never had an earlier immunization. During our Health Day 2003, 72 persons took blood tests, 35 had blood pressure screenings, and 28 free home testing colorectal screening kits were distributed. Also that day, Dr. Robert Klimek gave eye examinations for glaucoma in addition to retinal screenings and cataract checks to 31 persons. Dentist Dr. Lisa Barrett examined 20 persons for any signs of oral



cavity cancer. Dr. John Carroll saw 23 persons for foot screenings. Through the association's arrangements with a professional medical imaging service, ultrasound tests were offered at a reasonable charge. A total of 39 persons took advantage of these services that screened for carotid artery disease, abdominal aneurysm, peripheral vascular disease, and osteoporosis.

Our annual Adult Audio Clinic, administered by Mr. Jeff Worgul, a certified clinical audiologist, screened 20 persons. In the spring, the Pre-kindergarten Audio-Visual Clinic, which is co-sponsored with the Lyme Old Lyme Junior Women's Club, tested 30 children. Dr. Christine Semenza was in charge of the visual screenings and the Audio Clinic at Pequot Medical Center supervised the hearing component of the tests.

In June the association awarded the yearly scholarships to graduating seniors who intend to pursue college majors in health-related fields. The Old Lyme Visiting Nurse Association, Inc. Scholarship was awarded to two recipients and there was one recipient of the Mary H. Noyes Memorial Scholarship.

The Town of Old Lyme supports the professional nursing services operating budget. From the ongoing generous response of our residents and friends to our annual fund drive and the various memorial donations and gifts received over the years of our existence, the association is able to continue to offer a number of community public health services and programs to the residents of Old Lyme.

# Planning Commission

---

**Harold L. Thompson**  
*Chairman*

The Planning Commission meets in the town hall at 7:30 p.m. the second Thursday of each month except for August. Special meetings are held and scheduled as required and all meeting dates are posted on the bulletin board in the town hall and on the door to the Planning Commission office, or information can be obtained in the office from Kim Groves, our Land Use Administrator. The Planning Commission office is open from 9:00 a.m. to 4:00 p.m. during the workweek, and Kim Groves is always willing to receive your applications and assist you in any way.

The commission consists of five elected members and three alternates appointed by the Board of Selectmen. The commission is responsible, by State Statute, for the Town Plan of Development and subdivision regulations that are approved by a town meeting. These documents control and guide the growth and development of the town. The commission may also develop various ordinances, such as the types of and construction of roads, or they may be related to town development and structure. The commission is also required to act on any municipal development, such as the acquisition, relocation, or abandonment of any public property, land, parks, roads, schools,

public utilities, or anything owned or acquired by the town. The commission's decision may be overridden by the selectmen or a town meeting.

During the fiscal year the commission acted on many diverse issues such as subdivisions, divisions of land, municipal projects, open space, and changes to the zoning regulations. They held public meetings on and approved four subdivisions and five divisions of land that resulted in the addition of thirty new building lots; set bonds; approved open space; and acted on seven lot-line modifications, which improved the lots for the owners or for their potential for development.

The commission approved and recommended municipal improvements for development or modification of schools; improvements to town roads, such as Lyme Street; and the acquisition of large tracts of open space and residential property. The town subsequently approved all improvements accepted and recommended by the Planning Commission.

The commission would like to thank the Connecticut River Estuary Regional Planning Agency (CRERPA) and its director, Linda Krause, for the assistance provided throughout the year.



*New Center School media center, with circulation desk, office space, work room, seating area, book storage, and a mini computer lab.*



*Lots of activity outside this end of Center School made for distractions when the space was a classroom, but it's fine for a teacher's lounge, with copy machine, kitchen, phones, and a conference area. Here, physical education teacher Tim Gannon checks his copies.*



# Probate Court

Hon. Sylvia L. Peterson  
*Judge of Probate*  
Lynn Campbell  
*Clerk*

The principal function of the Probate Court is to appoint administrators or executors of estates of deceased persons and to monitor their progress in completing the administration of their duties. Probate Courts are statutory courts and, as such, have only the jurisdiction and authority granted by the state legislature. Probate Courts deal with a wide variety of matters in addition to decedents' estates. Other areas of jurisdiction and services include trusts; conservatorships; children's matters including guardianship, temporary custody, termination of parental rights, adoptions, and paternity; commitment of mentally ill children and adults; matters involving persons with mental retardation; review of treatment programs for mentally ill or emotionally disturbed children; emancipation of minors; change of name; determination of title to property and construing wills and trust instruments; confirmation of change in gender; consent for marriage of minors; custody of remains of deceased person; and processing of passport applications.

Charges made by Probate Courts are strictly regulated by statute. The court is not directly supported by tax dollars, rather by the fees collected for each matter. The town provides office space and a portion of operating expenses.

Matters acted upon in the Old Lyme Probate Court during this reporting period are as follows:

|                                      |     |
|--------------------------------------|-----|
| Decedents' Estates .....             | 140 |
| Trust Matters .....                  | 42  |
| Conservatorship Proceedings .....    | 15  |
| Children's Matters .....             | 13  |
| Adoptions and Terminations .....     | 1   |
| Mental Retardation Proceedings ..... | 13  |
| Other Matters .....                  | 9   |
| Passport Applications .....          | 252 |

The court has a variety of informational brochures available. As always, you are welcome to visit the court for information relating to the functions and procedures of the Probate Court. Hours are Monday through Friday, 9:00 a.m. to 12 noon and 1:00 to 4:00 p.m.



*Lyme-Old Lyme High School entrance*



*Water tank for Lyme Street campus*

*Although not renovated, the high school received the campus-wide benefit of a new water system and septic treatment plant, along with air conditioning.*

# Regional School District 18

---

David Klein  
Superintendent

The 2003-2004 school year was a time of continued forward progress in the areas of education and facilities and marked further organizational change in the Lyme-Old Lyme Public Schools. By the end of August 2004, the school district had successfully completed the Middle School renovation project and reopened the Center School for student and staff occupancy. The Middle School and Center School projects are currently being closed out with minimal punch list items being completed for issuance of final certificates of occupancy. The final piece of the total project close-out is a project audit to be conducted by the State Department of Education School Facilities Unit.

On behalf of the Board of Education and Administration, I extend a sincere thank you to the community, our staff, and students for their patience, support, and professionalism during the renovation process. Despite construction-related distractions and inconveniences, our district staff successfully delivered quality instruction and maintained their unflappable focus on meeting the needs of our Lyme-Old Lyme students. Further, the patience and graciousness of the community during this process was incredible and something we can all be proud of. Thank you.

Student performance is the most important aspect of what we do in the Lyme-Old Lyme Public Schools. I am delighted to report again that quantitative indicators of student performance remain strong in all academic and extracurricular areas. Those quantitative performance indicators include standardized test data, attendance reports, extracurricular participation rates, and disciplinary statistics. A qualitative assessment that includes the overall feeling (culture) in our schools and parent feedback also indicates that things are progressing in a positive direction. As you know, the most frequently publicized indicators of student success are the results of the Scholastic Aptitude Test (SAT), Connecticut Academic Performance Test (CAPT), Connecticut Mastery Test (CMT), and Advanced Placement (AP) tests. A summary of our 2003-2004 assessment results are as follows:

**CMT Scores Grades (4,6,8):** Our 2003 district performance on the Connecticut Mastery Test when compared to 22 other Southeastern Connecticut districts was strong (e.g., Grade 8: 1<sup>st</sup> in Reading and Mathematics and 2<sup>nd</sup> in Writing). Annual analysis of CMT data over time indicates that the number of students reaching mastery level increases annually as students progress from grade 4 to 6 and from grade 6 to 8 in almost all areas and across specific subgroups. Previously low grade 8 mathematics results have shown significant improvement over the past four years; however, we are investigating and concerned about low grade 4 results for the Fall 2003 testing cohort.

| SAT Averages: | Verbal: | Math: | Combined: |
|---------------|---------|-------|-----------|
| LOLHS         | 542     | 538   | 1080      |
| Connecticut   | 515     | 515   | 1030      |
| National      | 508     | 518   | 1026      |

**CAPT:** Spring 2004 CAPT scores improved over 2003 and were very strong when compared to 16 other Southeastern Connecticut school districts:

Math (2<sup>nd</sup>), Science (3<sup>rd</sup>), Reading (1<sup>st</sup>), Writing (2<sup>nd</sup>). We attribute this continued CAPT success to quality instruction in the district classrooms and tight curricular alignment.

**AP Scores:** 81% of LOLHS students' scores (65 students taking 95 AP tests) were in the passing range of "3" or higher. In fact, twenty more AP tests were taken in 2004 than in 2003. AP courses offered at LOLHS include the following: English Literature and Composition, French Language, Spanish Language, Math/Calculus (AB & BC), Biology, Chemistry, and Physics. Note: An AP U.S. History course is being offered for the first time in 2004-2005.

Many thanks to the community for supporting the district's 2004-2005 education budget. The \$24,047,668 budget, which represented a 7.4% increase over the 2003-2004 budget, was favorably endorsed by both towns. The passage of the 2004-2005 education budget marked the fourth consecutive time that the

## Regional School District 18 *(continued)*

---

budget has passed in both towns. The operating budget increase of 6.4% was consistent with other communities in the region and state and was composed of increases in the following areas: contractually negotiated salaries, employee health benefits, and special education tuition. Also included in the operating budget for the fourth consecutive year was a contingency maintenance account for unanticipated and unbudgeted maintenance repairs or projects. In addition, the district continued to fund the capital projects plan designed to implement projects that extend or expand facilities' usefulness throughout the district and address safety and ADA issues. The additional 1% of the budget increase is attributable to debt service, which consists of the principal and interest payments associated with the district's school renovation project. The good news about debt service is that the 2004-2005 budget represents the highest principal and interest (P&I) payment we are required to make and that beginning in 2005-2006 and continuing through 2023-2024, debt service will represent a budget decrease due to lower annual P&I payments. Once again this past year, the district prepared a three-year budget projection to enhance fiscal accountability and financial planning for the district and our member towns. So, we thank you, our community, for your continued support, as well as the trust and confidence you have placed in the district.

The district continues to use the strategic plan approved by the Board of Education (BOE) in September 2001 as a critical planning and decision-making tool. In fact, virtually all goals identified within the five-year plan have been completed in just three years, and the BOE is planning a Strategic Planning Renewal initiative to begin in April 2005. The Strategic Plan serves as the lens by which our district vision is focused and as a benchmark for continuous organizational improvement. The four target areas in the Strategic Plan are Student Programming; Curriculum & Instruction;

Community Relationships/Communications; and Facilities (Buildings & Grounds). Our commitment to the Strategic Plan and forward thinking has improved our planning, budgeting, and overall decision-making at the building and district level.

The true success of any organization is determined by the quality of the people working within it. Once again this year, the district experienced tremendous success in recruiting, hiring, and retaining exemplary staff members. The district's marketability to prospective employees and families continues to improve and indicates that our reputation as a school district and community that delivers and supports quality education is improving. One of our lofty district goals is to be recognized as a school district of choice within the region, as well as an example of all that is good in public education within our state. Quality organizations are built around exceptional people, and we are always seeking to improve. The district is committed to continuous improvement and striving to be the best we can be for the students of Lyme-Old Lyme.

In closing, the school district and the community are successfully working together and building upon strong partnerships, thereby developing greater synergy. For the past three years, Board of Education Chairwoman Lynn Fairfield-Sonn and I have been meeting monthly with our Lyme and Old Lyme Selectmen and Board of Finance chairs to discuss district matters and community issues. We value and appreciate this unique collaborative model for community leadership and decision-making. I believe that our community is poised for some remarkable accomplishments, and I remain confident in our ability to be regarded as an exemplary community and school district within the state. Our hard work, focus, and unwavering commitment to quality education will enhance the lives of our students and the pride and confidence of the citizens within our community.

## Registrars of Voters

---

Roderick M. White (R)

Patricia M. McCarthy (D)

Both registrars have now been honored at the state level for having served more than a decade. They are responsible for much more than bookkeeping or serving at the polls. They must work within the law and the regulations of the Secretary of State. They have also had to adapt to the many changing laws of the Federal government. This means participating in many workshops and conferences.

The theme this year for the annual report is "Look at Us Now." Consequently, here are the facts for the end of the year:

|              | 2003  | 2004  | Gain/(Loss) |
|--------------|-------|-------|-------------|
| Democrats    | 1,243 | 1,296 | 53          |
| Republicans  | 1,951 | 1,935 | (16)        |
| Unaffiliated | 2,366 | 2,382 | 16          |
| Other        | 7     | 4     | (3)         |
| TOTAL        | 5,567 | 5,617 | 50          |

Last year there was a loss of 43 registered voters; this year was an offsetting gain of 50 voters.

Many years ago Old Lyme was considered a "Republican Town." An observation shows that, in spite of an increase in the total enrollment of electors (50), there is a significant shift to Democrats and Unaffiliated at the expense of Republicans.

We anticipate a normal significant increase in the number of electors in the fall of 2004 because of a presidential election.

In closing, we mourn the passing of Deborah O'Meara, the Deputy of the Republican Registrar of Voters. She was devoted and loyal to the best interests of Old Lyme, the Republicans of the town, and to the Republican Registrar. "Deb" was loved by many and respected by all.

## Rogers Lake Authority

---

Fred Holth

*Chairman*

On behalf of the towns of Lyme and Old Lyme, Rogers Lake Authority members join in expressing our sincere condolences to the family of former Rogers Lake Authority Chairman Alan Kyle, who died suddenly in February 2004, leaving his widow, Flora, daughter, Paula Signora, and son, Brian, a member of the lake authority. Alan's varied contributions to our towns included able and willing service as a constable patrolling and enforcing lake ordinances, multiple tours as chairman of the Lyme Water Pollution Authority, membership on the Lyme Conservation and Inland Wetlands Commission, and multiple other community boards and groups, as well as a term as a Connecticut State Representative. Many of



*Alan M. Kyle*

these activities were pursued even as Al commanded a naval air squadron and was employed as a Pan American pilot.

Alan's life defined public service as purposeful, peaceful, and enjoyable, whether debating the intent or merits of legislation, gently encouraging compliance by errant skippers on Rogers Lake, or exploring new answers to vexing public policy issues. He was charged with a desire to gather all possible information and blessed with the patience to discuss and explain such nuances as he found in seeking public consensus. His untimely passing leaves an echo resonating in Lake Authority meetings, a shadow cast on the town waters he loved so well, all public losses paling in the mirror of his family's. We thank

## Rogers Lake Authority *(continued)*

---

them for the gift of Alan's time among us .

Part of Alan's legacy included completion of a comprehensive lake analysis, partially state funded, resulting in proposals for weed abatement, watershed management, and other resource reviews. In the coming months and years the availability of the data from this study will prove invaluable to lake residents and users.

As noted in Alan's final town report, enforcement problems have plagued the authority in recent years, with policing powers restricted to fully trained marine enforcement officers. While a marine patrol presence was sufficient in the past to curtail infractions, a pattern has emerged requiring greater vigilance, with full policing of the lake's waters. Over thirty inboard/outboards and innumerable outboards, sailboats, shells, canoes, swimmers, skiers, and

wakeboards routinely ply its 260 acres. Jet ski use has been a subject of common complaints, with multiple areas where personal watercraft navigation rules, restricting use to steerage speed within 200 feet of shore, are blatantly ignored. A recent severe propeller injury bears mute testimony to the need for extreme caution by boaters in the often congested waters of the lake.

A petition for enhanced enforcement of existing regulations, signed by a considerable number of local residents, emerged at the September 2004 meeting of the authority. Meetings as of the time this report is written are anticipated with state and town officials to deal with rigorous enforcement of existing ordinances and potential further measures. Your cooperation in reporting observed violations is encouraged.

---

## Social Services Department

**Kathryn Mannetho**

*Director*

**W**hat does the Social Service Department of Old Lyme do? We help people live a better life through resources and information.

In 1997 the State of Connecticut took over welfare and food stamp programs so that the Social Service Department in the towns no longer had this role. Some towns eliminated the department entirely and some towns, such as Old Lyme, kept theirs because so many people in crisis or in need of information fall between the cracks of the state programs. Thanks to Dorothy Weaver, the Social Service Emergency Fund was created and funded solely by donations from organizations and individuals

who want to help those in need. This fund is now a line item in the Social Services yearly budget to the tune of \$5,000 per year.

All of the money donated is used exclusively for the needy in Old Lyme for fuel, food, rent, prescriptions, car repairs, and electric bills to avoid shut-off or to enroll in the Nustart program.

This department also runs the Clothing Closet free to the public, hosts a free Thanksgiving dinner on Thanksgiving Day, and organizes and runs the holiday basket program. Renters rebate, fuel assistance, and ConnPace applications are also handled by this department. The office is located at the Lymes' Senior Center and is open from 10-4 Monday through Friday.

## Tax Collector

---

**Judith A. Tooker**

*Tax Collector*

This office continues its function of collecting real estate, motor vehicle, and personal property taxes as efficiently and pleasantly as possible.

We continue to be available for your questions and/or comments Monday through Friday 9 a.m. to 12 noon and 1 to 4 p.m.

## Treasurer

---

**Beatrice F. McLean**

*Town Treasurer*

The Treasurer's Office goes on as usual with receipts deposited, expenditures made according to the budget, and investments made as funds become available.

In 2003, as per our auditor's request, we opened three new checking accounts for ongoing capital projects. These were for Landfill Closure, Lyme Street Reconstruction, and Town Woods Park. In addition a new account has been opened for Town Woods Park Playground. The playground account is funded mainly by contributions, fund-raisers, and the sale of memorial bricks.

For the third year in a row we were unable to meet the projected Interest Income revenue in the budget. Interest rates were barely over 1% and some were below 1%. By State Statute municipal investment vehicles are limited to Certificates of Deposit, the State's Short-Term Investment Fund (STIF), or U.S. Treasury bills. There are also various money-market funds available, all invested in U.S. Government obligations.

For the fiscal year ending June 30, 2004 the budget for Interest Income was \$200,000. The actual revenue amount was \$88,000. By November we have seen a slight rise in interest rates so hopefully in Fiscal Year 2005 we may be able to meet the new budget estimate. It should be noted that the Town of Old Lyme's payments to Regional District 18 for our share of the school budget averages out to \$1,500,000 per month, leaving us with approximately the same amount of investment money even though tax monies have increased.

As always it is my pleasure to work with our Tax Collector, Judy Tooker. Her promptness in turning over tax receipts, especially in July and January, make it possible for town money to start earning interest as soon as available.



*Mile Creek students learn the use of the "smartboard"; the teacher's finger acts as a cursor on the screen to paint the house, and the same thing happens on the students' individual computer screens. Remember: these students are second graders or younger...*



*Computer lab, Middle School*



*Computers are available in the high-school library for classes; the "smartboard" in front is a popular teaching tool.*

# Town Meetings

## Town of Old Lyme

### Annual Town Meeting

Approximately 100 persons attended the Special Town Meeting on Monday, November 3<sup>rd</sup>, 2003 at 7:30 p.m. in the auditorium of the Middle School, District #18, Old Lyme, Ct.

The meeting was called to order by Timothy C. Griswold, First Selectman.

Atty. Marylin Clarke was elected to serve as Moderator.

Irene A. Carnell, Town Clerk, read the call of the meeting.

1. (a) Motion was made and seconded to purchase from Stephen Ames a parcel of land off Whippoorwill Road, Old Lyme, of approximately 70 acres for the sum of \$700,000.00, of which up to \$150,000.00 will be paid from the Town's Open Space Fund, and the balance thereof from the Town's Unreserved and Undesignated Surplus Fund, and (b) to accept from Stephen Ames for no monetary consideration an additional parcel of land off said Whippoorwill Road of approx. 35.95 acres subject to Ames' lifetime ownership. Said acquisitions have been approved by the Board of Finance and Planning Commission.

### Motion carried

Meeting was adjourned at 8:15 p.m.

*Respectfully submitted,*

*Irene A. Carnell*

*Town Clerk*

*Recorded by Irene A. Carnell*

*November 4, 2003*



*One Mile Creek School hall that USED to end in a double classroom now is a hallway to the front wing, enclosing a courtyard and offering more accessible emergency exits.*

## Town Of Old Lyme

### Annual Town Meeting

Approximately 70 persons attended the Annual Town Meeting on Monday, January 26, 2004 at 7:30 p.m. in the auditorium of the Regional District #18 Middle School, Old Lyme, Ct.

The meeting was called to order by Timothy C. Griswold, First Selectman.

The call of the meeting was read by Eileen K. Coffee, Asst. Town Clerk.

Atty. Marylin C. Clarke was elected to serve as moderator.

A motion was made and seconded:

1. to accept the Annual Town Report for the fiscal year July 1, 2002 to June 30, 2003.

### Motion carried.

2. Connie Kastelowitz was selected for the Citizen of the Year award for 2003 by the Old Lyme Board of Selectmen.

A motion was made and seconded:

3. to authorize that the Mutual of New York (MONY) litigation settlement funds (approximately \$600,000), a portion of which were part of the Town's MONY financial security plan for the benefit of fire department members, be applied to individual retirement accounts based on eligibility standards established by the Old Lyme Fire Department with the concurrence of the Board of Selectmen, the Pension Committee, and the Board of Finance.

### Motion carried

A motion was made and seconded:

4.A. to amend Chapter 197 and Article VII of Chapter 20 of the Code of the Town of Old Lyme by changing the name of the commission acting under the authority of the Inland Wetlands and Watercourse Act (CGS Section 22a-37 et seq.) from the Conservation Commission to the Inland Wetlands Commission. Any and all other References in said Code to "Conservation Commission," as well as all such references in the Old Lyme Zoning Regulations and Old Lyme Subdivision Regulations as of December 31, 2003 shall mean "Inland Wetlands Commission."

### Motion carried

A motion was made and seconded:

4.B. to adopt an ordinance establishing a new Conservation Commission, pursuant to the authority granted to municipalities in

## Town Meetings *(continued)*

---

CGS Section 7-131a. A copy of said proposed ordinance is on file in the office of the Old Lyme Town Clerk for inspection.

### **Motion carried**

A motion was made and seconded:

5. to approve the reappointment of Jane R. Marsh to the Connecticut River Estuary Regional Planning Agency (CRERPA), such term to expire in January, 2006 as recommended by the Board of Selectmen.

### **Motion carried**

A motion was made and seconded:

6. to amend Chapter 156 of the Code of the Town of Old Lyme, Trees and Shrubs, by authorizing the appointment of alternates to the Tree Commission, a copy of which proposed ordinance is on file in the office of the Old Lyme Town Clerk for inspection.

### **Motion carried**

A motion was made and seconded:

7. to amend Chapter 150 of the Code of the Town of Old Lyme, Taxation, by authorizing the surcharge of \$5.00 against any delinquent motor vehicle taxpayer, under CGS 12-146, as amended in June 2003, whose delinquency has been reported to the Commissioner of Motor Vehicles. A copy of said proposed ordinance is on file in the office of the Old Lyme Town Clerk for inspection.

### **Motion carried**

Meeting adjourned at 8:00 p.m.

*Respectfully submitted,*

*Eileen K. Coffee*

*Assistant Town Clerk*

*Recorded by Eileen K. Coffee*

*January 27, 2004*

Meeting moved across the hall to cafeteria.

### **ORDINANCE ESTABLISHING A NEW CONSERVATION COMMISSION**

#### **1. Statutory authority.**

This article is adopted pursuant to the provisions of CGS 7-131a.

#### **2. Establishment.**

There shall be established a Conservation Commission of the Town of Old Lyme.

#### **3. Powers and Duties.**

Said Commission shall have the responsibilities and powers which are set forth in CGS 7-131a, as amended.

#### **4. Membership; Terms of Office.**

Said Commission shall consist of six regular members who shall be appointed by the Board of Selectmen. The terms of the initial members shall be as follows: two members for a one-year term, two members for a two-year term, and two members for a three-year term. Thereafter, members shall be appointed for a three-year term, ending on the second Monday in January, or until a successor shall have been appointed.

#### **5. Alternate Members.**

Said Commission shall have three alternate members appointed by the Board of Selectmen in January to serve for one year.

#### **6. Qualifications.**

All Commission members and alternate members shall be electors of the Town of Old Lyme.

#### **7. Vacancies.**

Per CGS Section 7-131a, the First Selectman may remove any member or alternate member for cause, and may fill vacancies.

#### **8. Ex-Officio Member.**

An Old Lyme member of the Connecticut River Gateway Commission, designated by the Board of Selectmen, shall serve as an ex-officio member of the Commission.

### **CHAPTER 150**

#### **Article V**

Fees Due For Motor Vehicle Tax Delinquencies  
Section 150--Fees Authorized

Pursuant to the authority granted by CGS 12-146, as amended by Section 58 of Public Act 03-06 (Special Session, June 30, 2003), the Tax Collector shall charge each taxpayer whose motor vehicle taxes are delinquent (as defined in CGS 12-146), and which delinquency has been reported by the Tax Collector to the Commissioner of Motor Vehicles pursuant to CGS 14-33, a fee of \$5.00 in addition to the delinquent taxes and all interest due thereon.



## Town Meetings *(continued)*

### Town of Old Lyme Special Town Meeting

Approximately 14 persons attended the Special Town Meeting Monday April 19, 2004 at 7:30 pm at the Middle School auditorium of Regional District 18, Lyme Street, Old Lyme.

The meeting was called to order by Timothy C. Griswold, First Selectman.

Atty. Marilyn C. Clarke was elected to serve as Moderator.

Irene A. Carnell, Town Clerk, read the call of the meeting.

1. A motion was made and seconded to approve a contract with Country Lawn and Garden Landscape C. for grounds maintenance of Town Woods Park as follows:

A. For the fiscal year ending 30 June 2004  
\$10,407

B. For the fiscal year ending 30 June 2005  
\$52,053

C. For the fiscal year ending 30 June 2006  
\$54,912

#### **Motion carried**

2. A motion was made and seconded to authorize the expenditure of an amount not to exceed \$940,000.00 for the purpose of reconstructing Lyme Street from Maple Lane to the Parsonage.

#### **Motion carried**

Meeting adjourned at 7:48 pm

*Respectfully submitted,  
Irene A. Carnell, Town Clerk  
Recorded by Irene A. Carnell  
April 20, 2004*



*The High School shop, home of the "Techno Ticks," with robots visible on the high shelves*

### Town of Old Lyme Special Town Meeting

Approximately seventy (70) people attended the Old Lyme Annual Budget Meeting Monday, May 17, 2004 at 7:30 p.m. in the Middle School of District #18, Lyme Street, Old Lyme, CT.

The meeting was called to order by Timothy C. Griswold, First Selectman.

Atty. Marilyn C. Clarke was elected to serve as Moderator.

Irene A. Carnell, Town Clerk, read the call of the meeting.

1. A motion was made and seconded to authorize the expenditure of a sum not to exceed \$315,000.00 for the construction of a recreational building, approximately 1,950 square feet in size, at the Town Woods Park in Old Lyme, CT, 75% of which shall be owned by the Town of Old Lyme and 25% by the Town of Lyme.

#### **Motion carried**

2. A motion was made and seconded to adopt the Budget for the fiscal year July 1, 2004 through June 30, 2005, as recommended by the Board of Finance.

#### **Motion carried**

3. A motion was made and seconded to adopt a proposal that taxes in the Town of Old Lyme on Real Estate and Personal Property shall be paid in two (2) semiannual installments, the first payment being due on July 1, 2004 and the second payment on January 1, 2005. Any tax in these categories under \$100.00 will be due in full in one payment in July 2004, as are vehicles on the Supplemental List due January 2005.

#### **Motion carried**

Meeting adjourned at 8:09 pm

*Respectfully submitted,  
Irene A. Carnell, Town Clerk  
Recorded by Irene A. Carnell  
May 18, 2004*

## Town Meetings *(continued)*

---

### Town of Old Lyme Special Town Meeting

Over 243 persons attended the Special Town Meeting Monday, June 28, 2004 at 7:30 pm in the Middle School auditorium of Regional District #18, Lyme St., Old Lyme, CT.

The meeting was called to order by Timothy C. Griswold, First Selectman.

Atty. Marilyn C. Clarke was elected to serve as Moderator.

Irene A. Carnell, Town Clerk, read the call of the meeting.

1. A motion was and seconded to authorize the sale by the Town of the premises at 47 Lyme St. to Regional School District #18 for the sum of \$381,000.00, such sale to take place by August 31, 2004.

**Motion defeated**  
(154 NO, 79 YES)

2. A motion was made and seconded, that

in the event the sale of 47 Lyme St., per item 1, shall not be authorized by the Town Meeting, or thereafter by a Regional School District #18 meeting prior to August 31, 2004, to authorize the public sale of said premises, for a sum not less than \$400,000.00, such auction to be conducted by sealed bids in accordance with terms established by the Board of Selectmen.

### **Motion carried**

Meeting adjourned at 9:12 pm

*Respectfully submitted,*  
*Irene A. Carnell*  
*Town Clerk*

*Recorded by Irene A. Carnell*  
*June 29, 2004*

## Water Pollution Control Authority

---

**Tom Risom**  
*Chairman*

**T**he Old Lyme Water Pollution Control Authority (WPCA) was established in 1997 in response to a Department of Environmental Protection (DEP) order to address the potential degradation of the town's surface and ground water due to a variety of factors, including storm water runoff, agricultural chemicals (lawn fertilizer), sanitary sewers, and other factors exasperated by continuing residential and commercial development. Your WPCA immediately adopted a position of sewer avoidance because we recognized that the town's single most precious resource is its ground water. It is the responsibility of the WPCA to ensure that the natural bacteriological processes that allow us to recycle this most precious resource can adequately handle all the water that enters the ground, the streams, and eventually Long Island Sound. If we are doing our job, all the water that every home, business, and school in town draws from the ground will continue to be able to be used with little or no treatment. In the past few years the Connecticut Water Company has installed

several well fields in the town that serve much of the Old Lyme waterfront and the schools. These well fields and the shallow or deep well that may be serving your home draw water that is placed in the aquifer from upstate or your neighbor's or your own back yard. That is why we are dedicated to the entire water cycle: discharge, filtration, and re-use.

Your WPCA, through the sanitarian's office, the state Department of Environmental Protection (DEP), and the state Department of Health (DOH), continues to focus on the treatment of sanitary waste. In the past year we have aggressively monitored the frequency of septic tank pump-outs and condition of the 7,500 septic systems in town. The WPCA changed the mandatory pump-out cycle from seven years to five years, and it is our hope that the percentage of homes that comply will increase above the current rate. Owners who do not comply are doing their neighbors and their community a true disservice. The state requires your WPCA to remain diligent in the monitoring and maintenance of individual

## Water Pollution Control Authority *(continued)*

---

subsurface disposal systems (ISDS). Failure to do so would lead to more state involvement and resulting cost. In the coming year your WPCA will increase its campaign to inspect every system in town and get those with problems fixed. If your pump-out ticket revealed any problems we behoove you to affect required repairs and reduce the administrative costs of enforcement.

Aside from addressing septic systems, the WPCA is working with the Zoning and the Planning Commissions to educate landowners as to what can be done to mitigate other forms of pollution. These efforts include the control of fertilizers and pesticides, reduction of impervious surfaces that aggravate storm water runoff, and the support of vegetation that helps promote the oxygenation of our wetlands and the conversion of nitrogen. The WPCA and the Conservation Commission have joined to form a pesticide committee that will work to educate homeowners on nonpolluting methods to obtain a green lawn and lush gardens. The WPCA is also encouraging the Open Space Committee to not only protect the aquifer by retaining

land as open space but to obtain larger areas for ground-water recharge and leaching fields. Not unique to Old Lyme, the proliferation of small building lots, especially in the waterfront communities, causes potential nitrate problems in the ground water. To support these areas where residential density may be higher than the ground can successfully handle, the WPCA is promoting and may participate in the design, procurement, or installation of small packaged “technical” septic systems that would support several homes together. It is our goal to manage the town’s water locally, thus avoiding point concentration of pollution that larger towns and cities have created by piping their sewage to single locations.

Your WPCA exists to preserve the quality of water in the ground, ponds, streams, and ocean. While our involvement in your home’s systems may seem a burden, the one resource we cannot live without is water. We take our responsibility to protect this resource very seriously. Please stop by one of our monthly meetings on any third Thursday at 7:30 in the town hall. We would like to hear your thoughts and experiences and find ways to serve the citizens of our special place on the shore.

## Zoning Board of Appeals

---

**June B. Speirs**  
*Chairman*

**T**he standards that guide and limit the Zoning Board of Appeals are the Connecticut General Statutes. Acting in a quasi-judicial capacity, the board hears appeals for variances and from decisions of the Zoning Enforcement Official (ZEO). The Zoning Board of Appeals’ duties and responsibilities do not include the enactment and revisions of the Zoning Regulations, which lie with the Zoning Commission, nor those functions of the Planning Commission, which oversees the development of land and therefore housing within the town.

Due to the development of the beach areas prior to zoning, which was adopted in 1958, most of our recent cases relate to nonconforming lots

and structures. Our caseload for the fiscal year was fifty-three cases: thirty-five granted, some with conditions; nine denied; two ZEO upheld; and seven withdrawn appeals. The number of meetings held was ten regular meetings and ten special meetings.

Our regular meetings are held on the second Tuesday of each month, except for August and December. My appreciation to our board members Tom Schellens, Richard Moll, Susanne Stutts, Kip Kotzan, Wendy Brainerd, Judy McQuade, and Edgar Butcher and our secretary, Sue Bartlett, for their faithful attendance and commitment to the board and the town.

# Zoning Commission

---

Ted Kiritsis  
*Chairman*

The Old Lyme Zoning Commission's powers and duties are prescribed by the Connecticut General Statutes (C.G.S.) Chapter 124.

The General Statutes grant the following specific powers and duties to the Zoning Commission:

1. To establish, change, or repeal zoning regulations and zoning districts in accordance with the consideration set forth in C.G.S. Section 8-2.
2. To hear, consider, and decide upon petitions for changes in the zoning regulations or zoning district boundaries.
3. To provide for the manner in which the zoning regulations are to be enforced and to take appropriate actions to enforce them.
4. To certify, when appropriate, that a building, structure, or use is or will be in conformity with the zoning regulations. This function may be delegated to a zoning enforcement officer.
5. To require, when appropriate, that a site plan be filed to aid in determining the conformity, modify, or deny such a site plan. This function may be delegated to a zoning officer or to another municipal agency.
6. To hear, consider, and decide upon applications for special permits or special exceptions in accordance with the zoning regulations. This function may be delegated to a zoning board of appeals or a planning commission.
7. To hear, consider, and decide upon applications for motor vehicle junkyard locations.
8. To regulate and restrict the location of any steam plant, gas plant, gas tank or holder, water tank, electric substation, antenna, tower, or earth station receiver of any public service company not subject to the jurisdiction of the Connecticut Siting Council.
9. To approve or disapprove the construction of any above-ground vault, crypt, columbarium, or mausoleum for public use in any cemetery containing less than five acres.

10. To approve or disapprove the location of crematories proposed for plots of land that have not been used as cemeteries for a least five years or that are not established cemeteries containing twenty or more acres.

Meetings are held on the second Monday of the month at 7:30 p.m. at the Old Lyme Memorial Hall. The commission consists of five elected members and three elected alternates. Meetings are open to the public, who are encouraged to attend.

The past year has been a very active year for the Zoning Commission.

Items addressed during these meetings included the following:

- Regional District 18 Center School, revisions to the driveway
- Transfer Station at Four Mile River Road
- 32-Unit Motel at 230 Shore Road
- Lighting Changes for the Lyme Academy
- Modifications to the landscape and fencing for the new Christ the King Church
- Construction of a Pavilion at Point O'Woods
- Enlargement for automotive repair facility at 147 Boston Post Road
- Numerous requests for accessory apartment and docks
- Private garages, construction storage, offices, and workshops

The commission continues to work on the Zoning Commission Regulations. Goals include the restructuring of the regulations to be more "user friendly" and elimination of conflicts within the regulations. Meetings for work on the regulations are held on the fourth Monday of the month at 7:30 p.m.

This commission continues to work with CREPA for incorporating applicable Gateway Regulations into the zoning regulation.

Efforts have also been underway to establish workable regulations for the Sound View Design District.